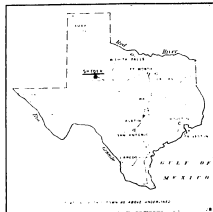


CORRECTION RECORD table with columns: REV. NO., DATE OF CORRECTION, ATTACHED BY, DATE ATTACHED.



MAP 10 1336

Scale of 1" = 1500'

PAVING: Approximately 20 miles of asphalt and gravel.

GRADES: Rolling. PUBLIC LIGHTS: Electric.

WATER FACILITIES

Municipally owned. Source from 5 wells, 160' deep. Gravity and direct pressure system. 1 concrete reservoir, capacity 150,000 gallons, located at Pump Station and level with business section.

5.056 miles of water mains. 53 double and 2 triple hydrants. Average daily consumption 100,000 gallons. Domestic and fire pressure 90 lbs.

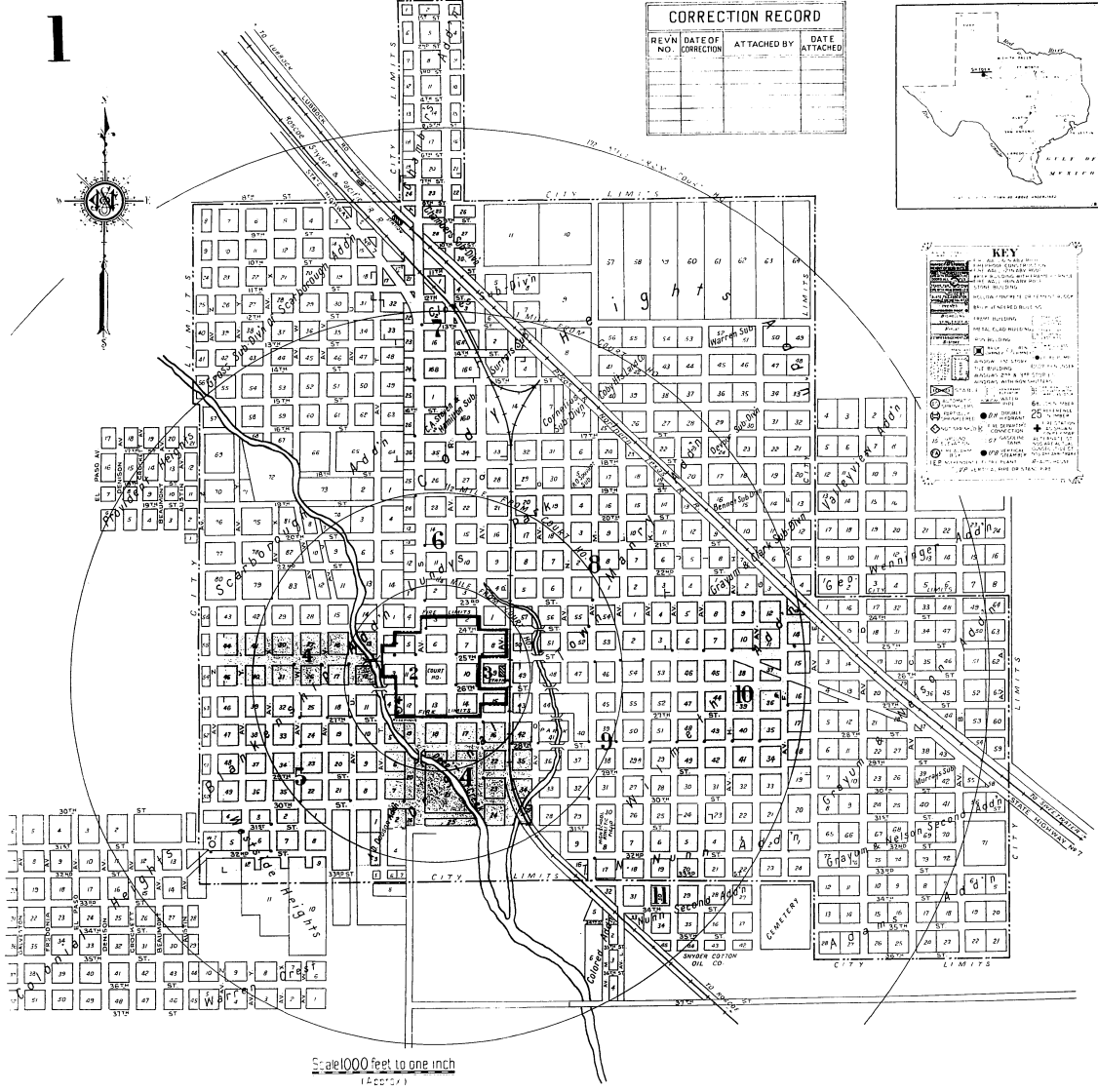
FIRE DEPARTMENT

Volunteer company. 22 members. 1 chief, 1 assistant chief, and 19 men, paid per fire. 1 driver, fully paid, lives at Fire Station. 1 station.

1 Southern triple combination truck with 500 gallon per minute pump, 1250' 2 1/2" hose, one 30 gallon booster tank with 100' 1 1/2" hose, one 12' roof ladder, one 24' extension ladder, two 8 gallon chemical tanks and minor equipment. 1 International hose truck with 800' 2 1/2" hose, one 30 gallon chemical tank with 100' 1 1/2" hose, one 12' roof ladder and one 24' extension ladder.

Fire alarm by telephone. General alarm by electric siren.

FIRE-RESISTIVE ROOFING ORDINANCE. Ordinance prohibits wooden shingle roofs in Fire Limits Only.



Scale 1000 feet to one inch

INDEX

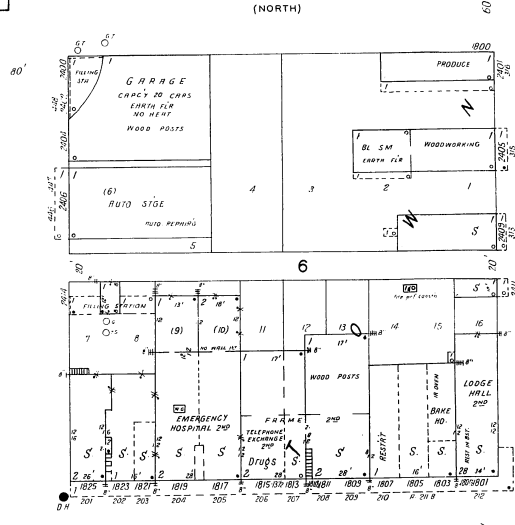
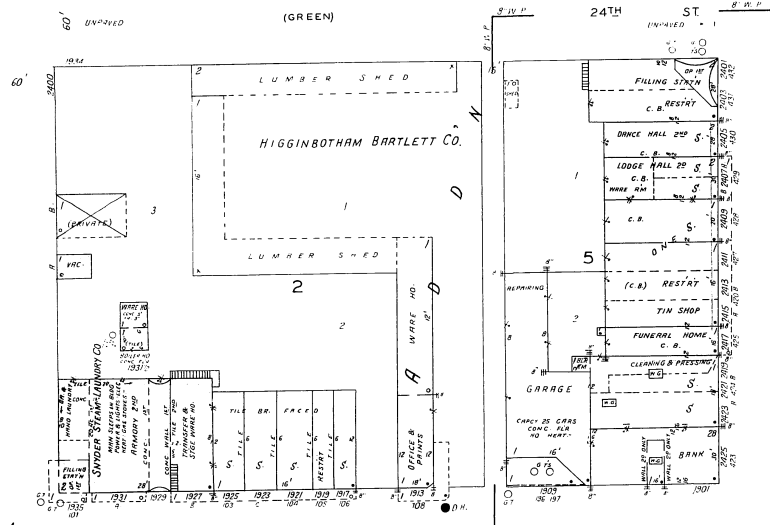
INDEX table listing streets and special locations. Columns include street names, ranges, and special locations like churches and schools.

* Indicates only one side of Street shown.

2

6

2

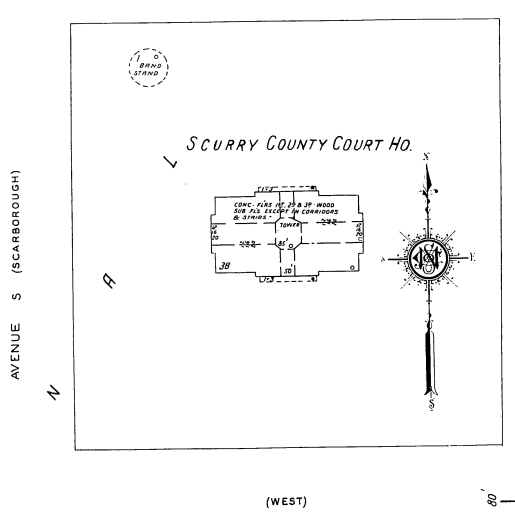
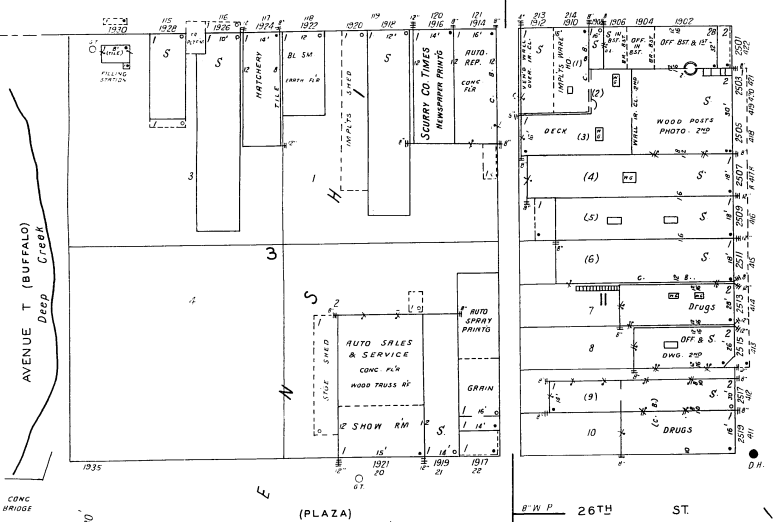


4

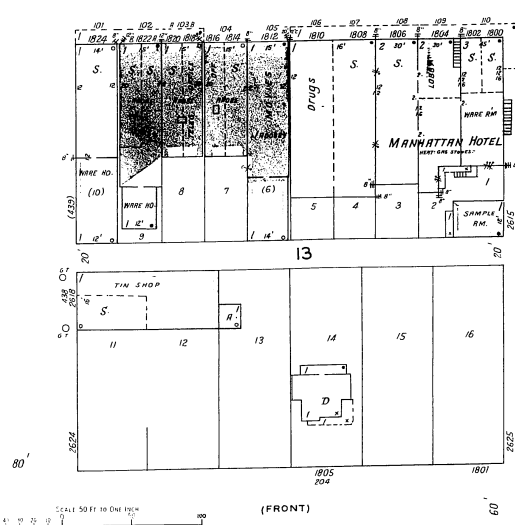
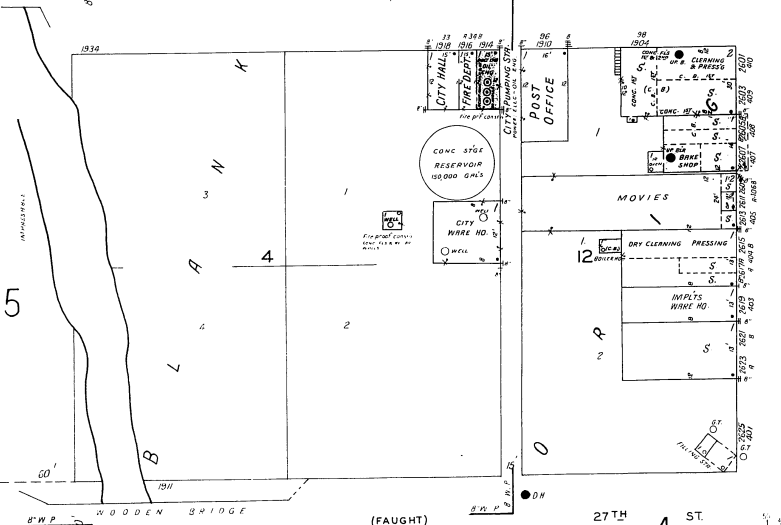
(WILMETH)

25TH ST.

(PLAID)

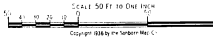


3



(FRONT)

(2058)



3

6

8

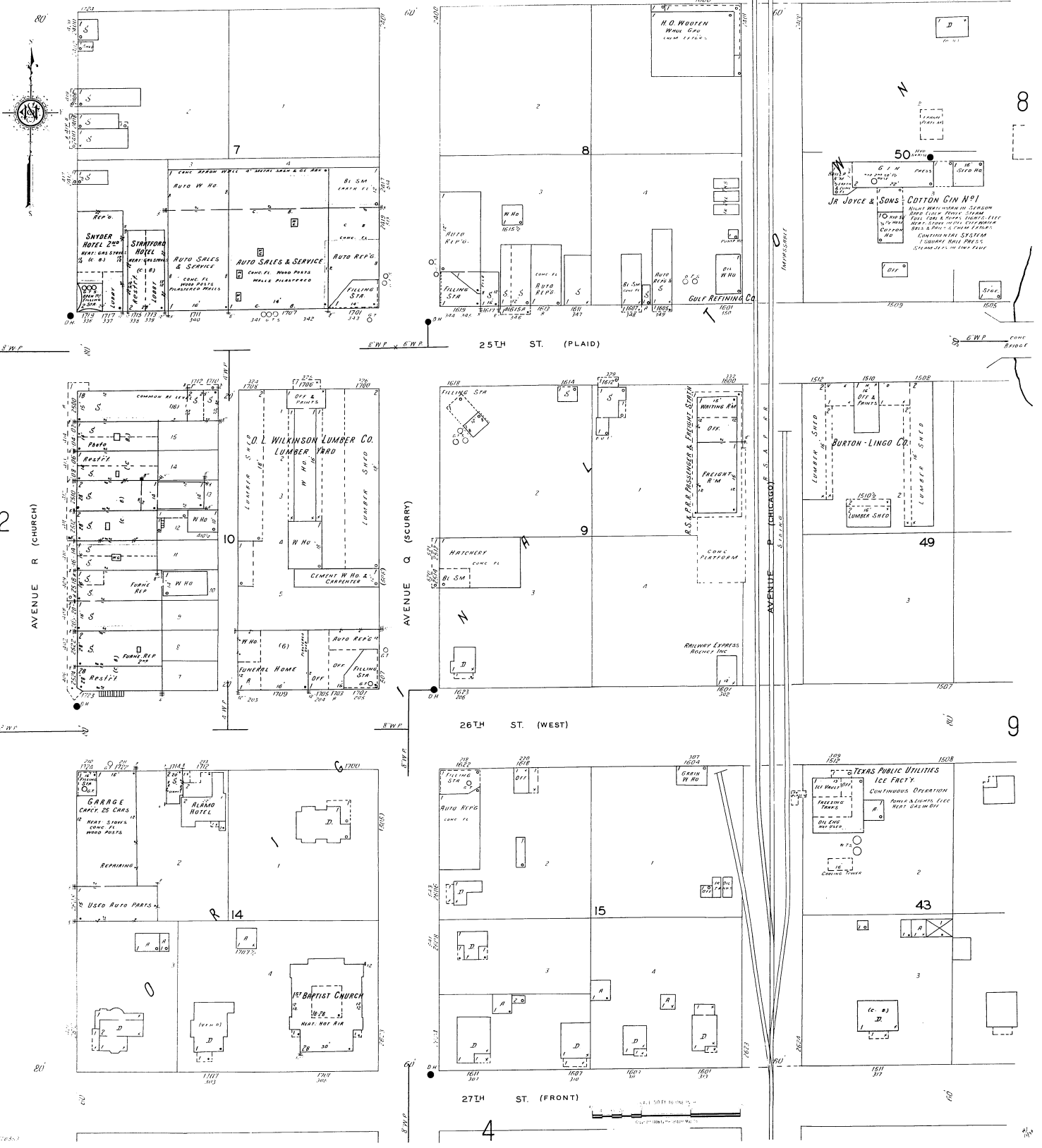
3

24TH ST. (NORTH)

25TH ST. (PLAID)

26TH ST. (WEST)

27TH ST. (FRONT)



AVENUE R (CHURCH)

AVENUE Q (SCURRY)

AVENUE P (CHICAGO)

2

8

9

80

4

8

50

JR JOYCE & SONS
COTTON GIN NO 1

49

43

TEXAS PUBLIC UTILITIES
ICE FACTORY

1507

1508

1509

1510

1511

1512

1513

1514

1515

1516

1517

1518

1519

1520

1521

1522

1523

1524

1525

1526

1527

1528

1529

1530

1531

1532

1533

1534

1535

1536

1537

1538

1539

1540

1541

1542

1543

1544

1545

1546

1547

1548

1549

1550

1551

1552

1553

1554

1555

1556

1557

1558

1559

1560

1561

1562

1563

1564

1565

1566

1567

1568

1569

1570

1571

1572

1573

1574

1575

1576

1577

1578

1579

1580

1581

1582

1583

1584

1585

1586

1587

1588

1589

1590

1591

1592

1593

1594

1595

1596

1597

1598

1599

1600

1601

1602

1603

1604

1605

1606

1607

1608

1609

1610

1611

1612

1613

1614

1615

1616

1617

1618

1619

1620

1621

1622

1623

1624

1625

1626

1627

1628

1629

1630

1631

1632

1633

1634

1635

1636

1637

1638

1639

1640

1641

1642

1643

1644

1645

1646

1647

1648

1649

1650

1651

1652

1653

1654

1655

1656

1657

1658

1659

1660

1661

1662

1663

1664

1665

1666

1667

1668

1669

1670

1671

1672

1673

1674

1675

1676

1677

1678

1679

1680

1681

1682

1683

1684

1685

1686

1687

1688

1689

1690

1691

1692

1693

1694

1695

1696

1697

1698

1699

1700

1701

1702

1703

1704

1705

1706

1707

1708

1709

1710

1711

1712

1713

1714

1715

1716

1717

1718

1719

1720

1721

1722

1723

1724

1725

1726

1727

1728

1729

1730

1731

1732

1733

1734

1735

1736

1737

1738

1739

1740

1741

1742

1743

1744

1745

1746

1747

1748

1749

1750

1751

1752

1753

1754

1755

1756

1757

1758

1759

1760

1761

1762

1763

1764

1765

1766

1767

1768

1769

1770

1771

1772

1773

1774

1775

1776

1777

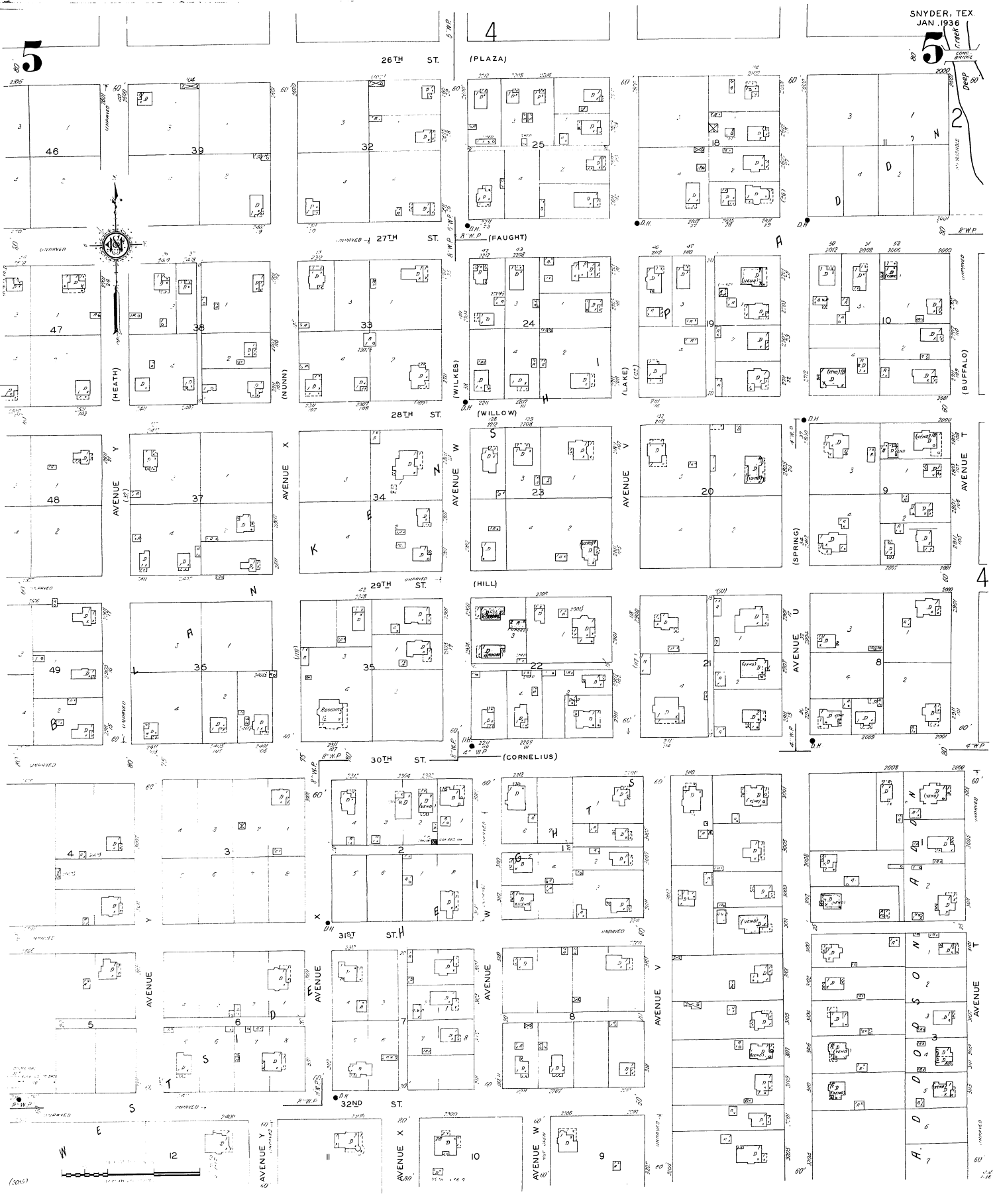
1778

1779

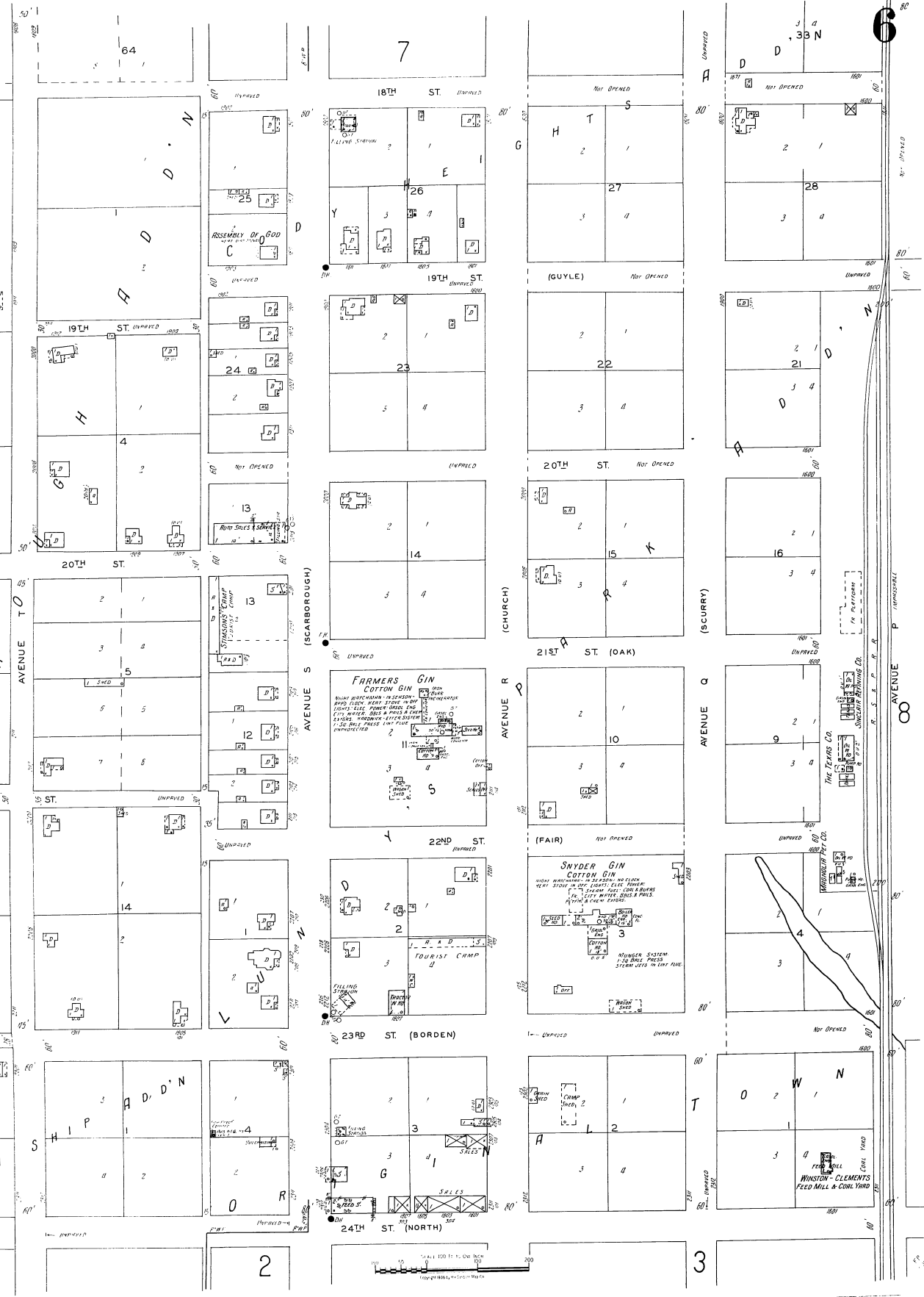
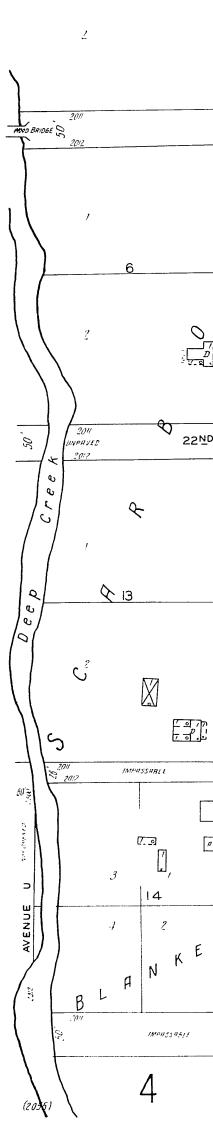
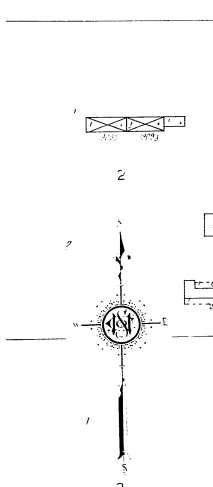
1780

1781

5
DEEP
DRAINAGE



4



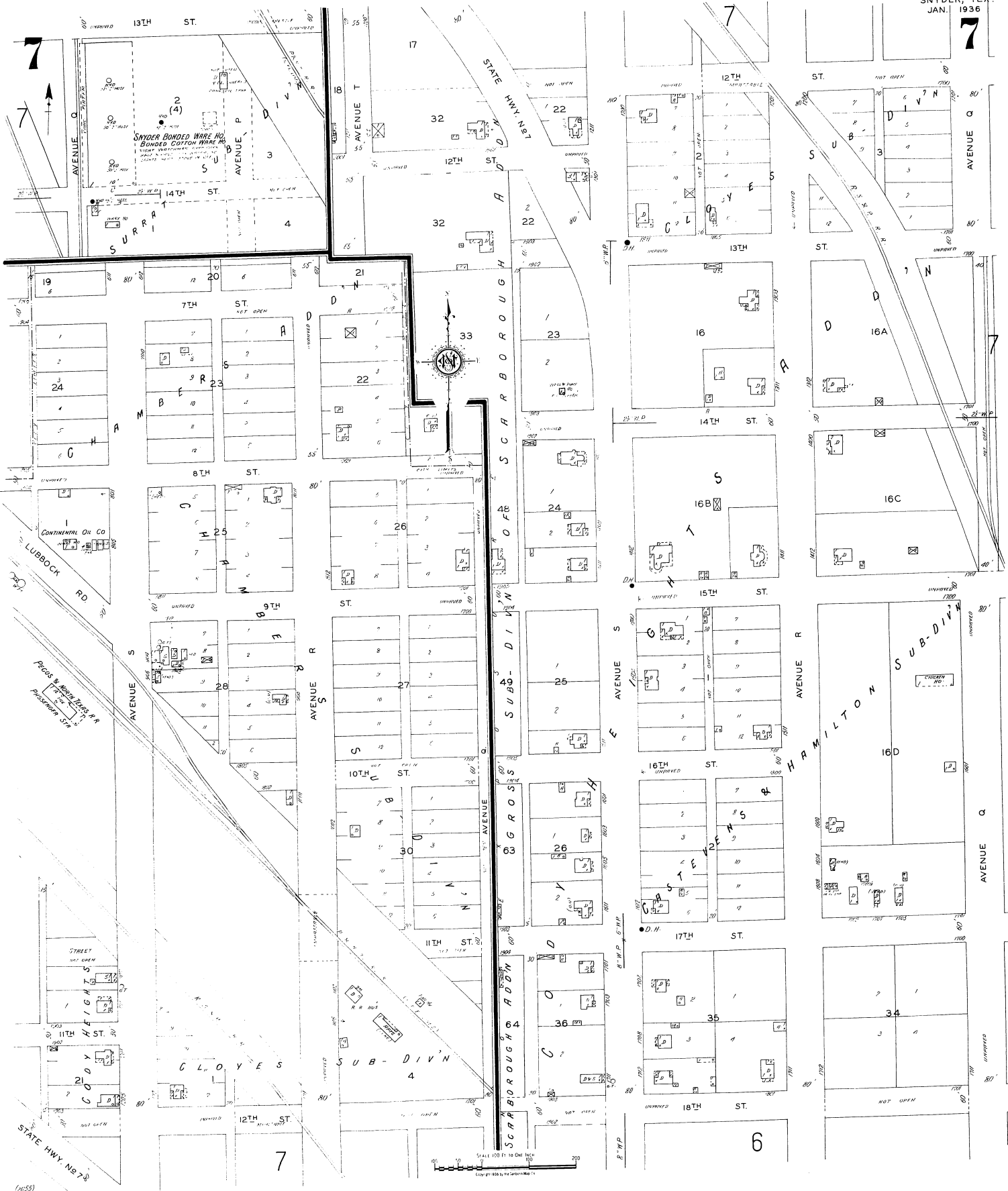
FARMERS GIN
COTTON GIN
SOLE WORKING IN SEASON - 1000 BURLS
HARD LOCK HEAT STONE MASH
ELECTRIC POWER AND
CITY WATER. THIS IS A FULLY
EQUIPPED, MODERN APPLIANCE
1-1/2 TON PRESS CAPACITY
UNMATCHED

SNYDER GIN
COTTON GIN
SOLE WORKING IN SEASON - 1000 BURLS
HARD LOCK HEAT STONE MASH
ELECTRIC POWER AND
CITY WATER. THIS IS A FULLY
EQUIPPED, MODERN APPLIANCE
1-1/2 TON PRESS CAPACITY
UNMATCHED

TOURIST CAMP
WINDMILL SYSTEM
1-1/2 TON PRESS
3 TON JOLLY IN ONE PLACE

WINDMILL
WINDMILL SYSTEM
1-1/2 TON PRESS
3 TON JOLLY IN ONE PLACE

1" = 200 FT. ONE INCH = 200 FEET
Copyright 1935, J. C. Smith & Co.



SNYDER, TEX.
JAN. 1936

8

8

RIO STUYVANT SUB-DIV

19TH ST. UNPAVED

20TH ST.

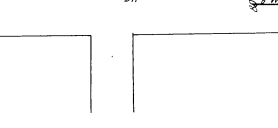
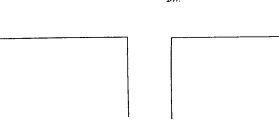
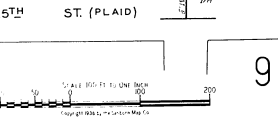
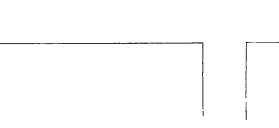
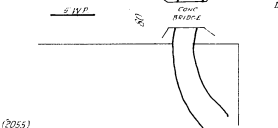
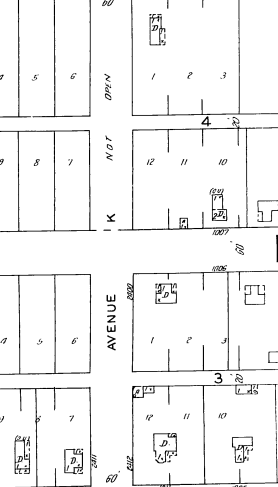
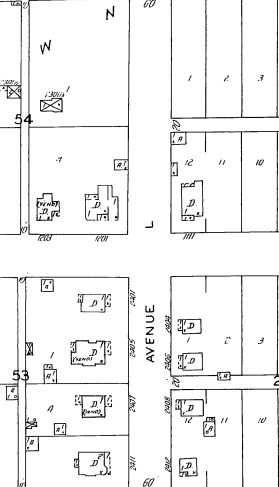
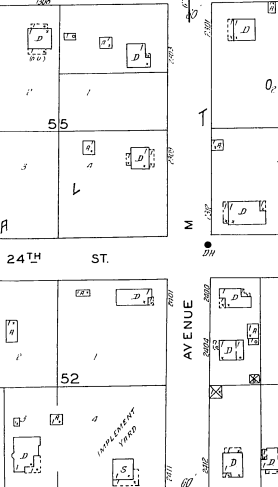
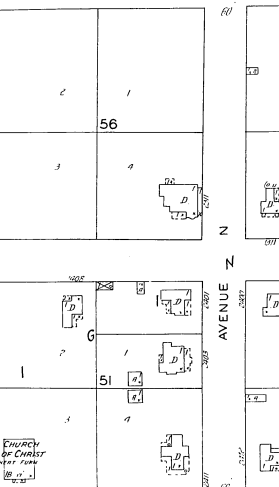
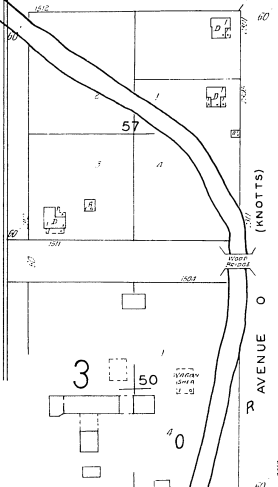
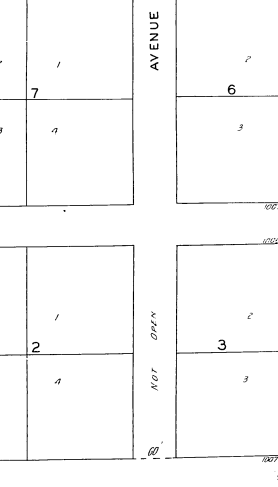
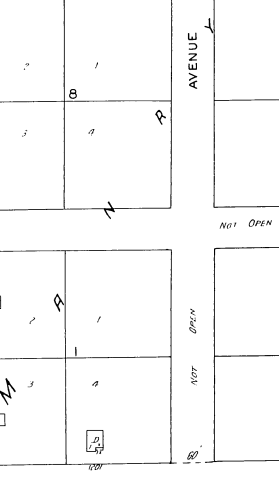
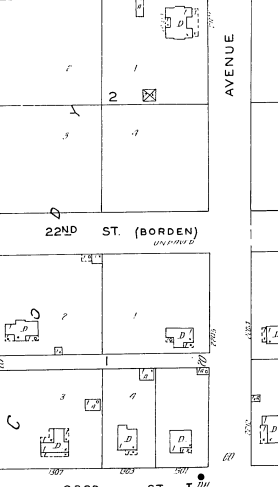
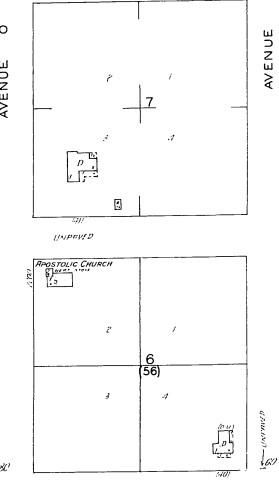
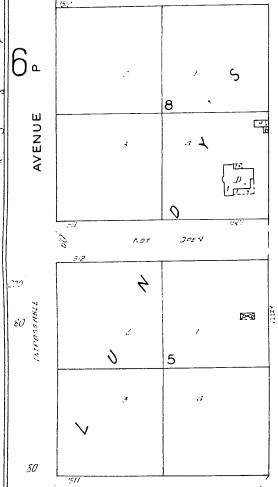
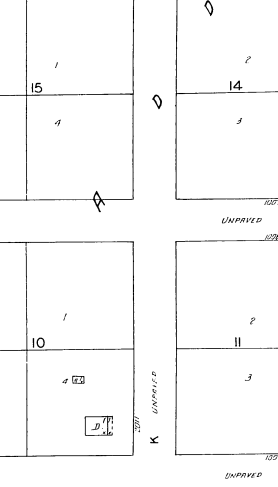
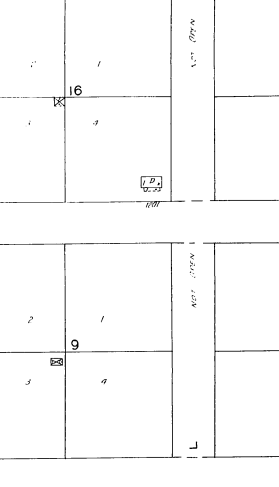
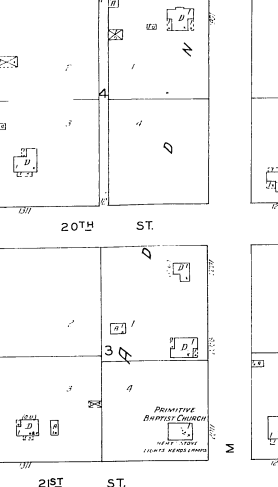
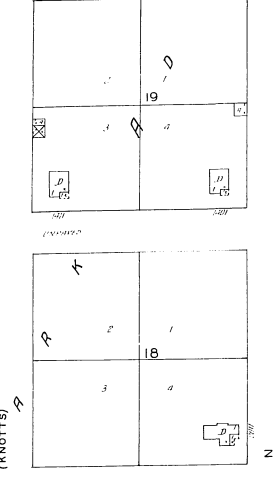
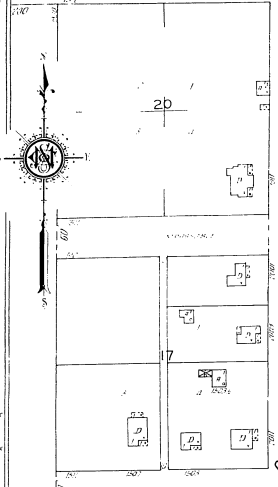
21ST ST.

22ND ST. (BORDEN)

23RD ST.

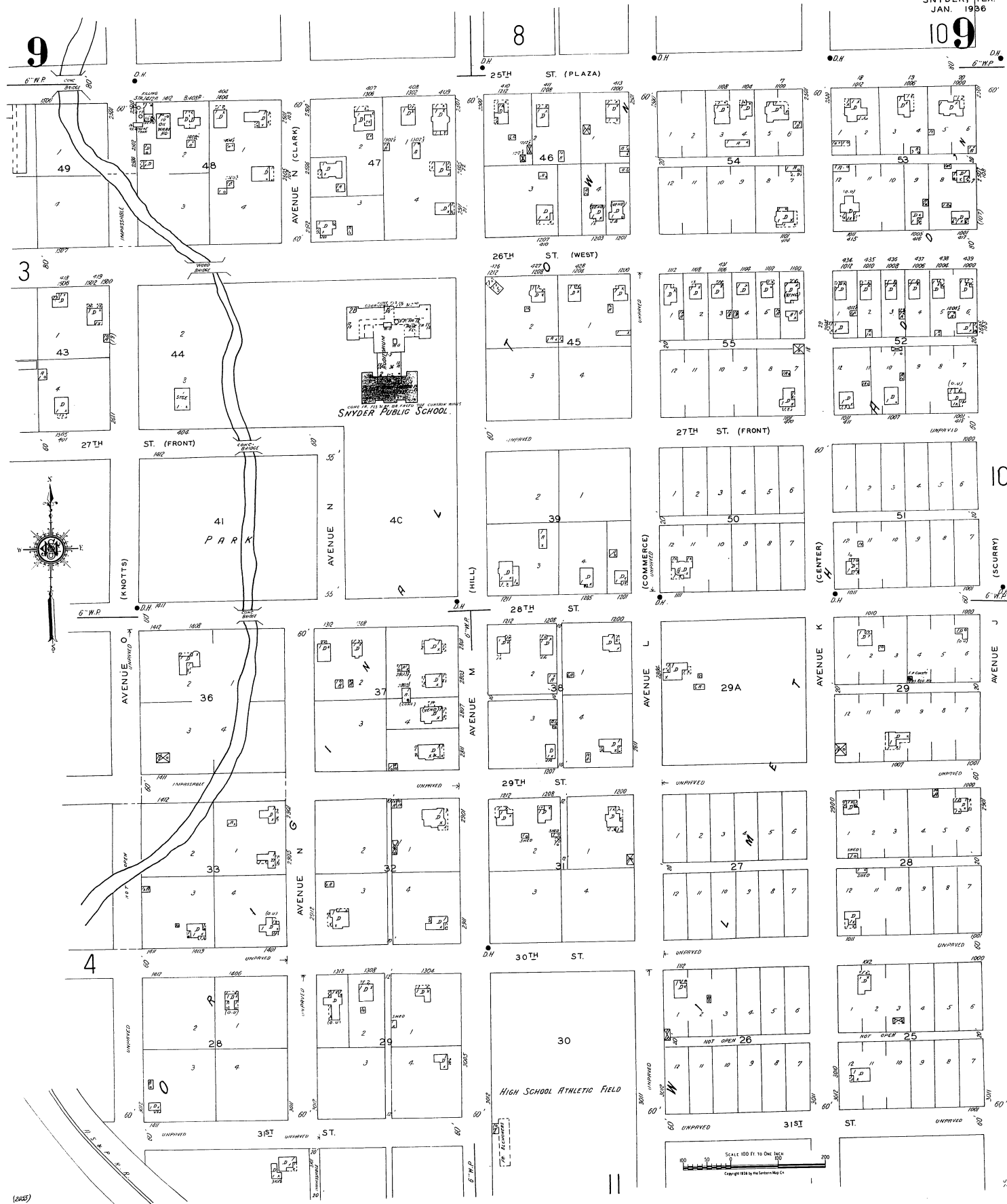
24TH ST.

25TH ST. (PLAID)



9

10



9

8

3

10

4

SNYDER, TEX.
JAN. 1936

M A R A

H A D D ' N

G R

M H

C L A

R K

S U B

D 14 V ' A



(7955)



RIGHT NEUTRAL BRD. CLOW
UNDER ST. 1911, 1912, 1913, 1914
CANT. STONE IN OFF. BLDG. N.
1915 & 1916. 1917. 1918. 1919.
FRONT 2' DEEP. FIELD 5' x 3' CON.
STREET WIDEN. 10' x 10' x 10'.
CROW. 10' x 10'.