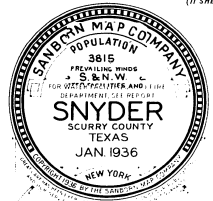
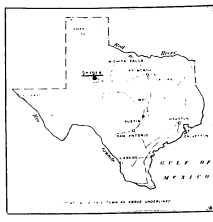
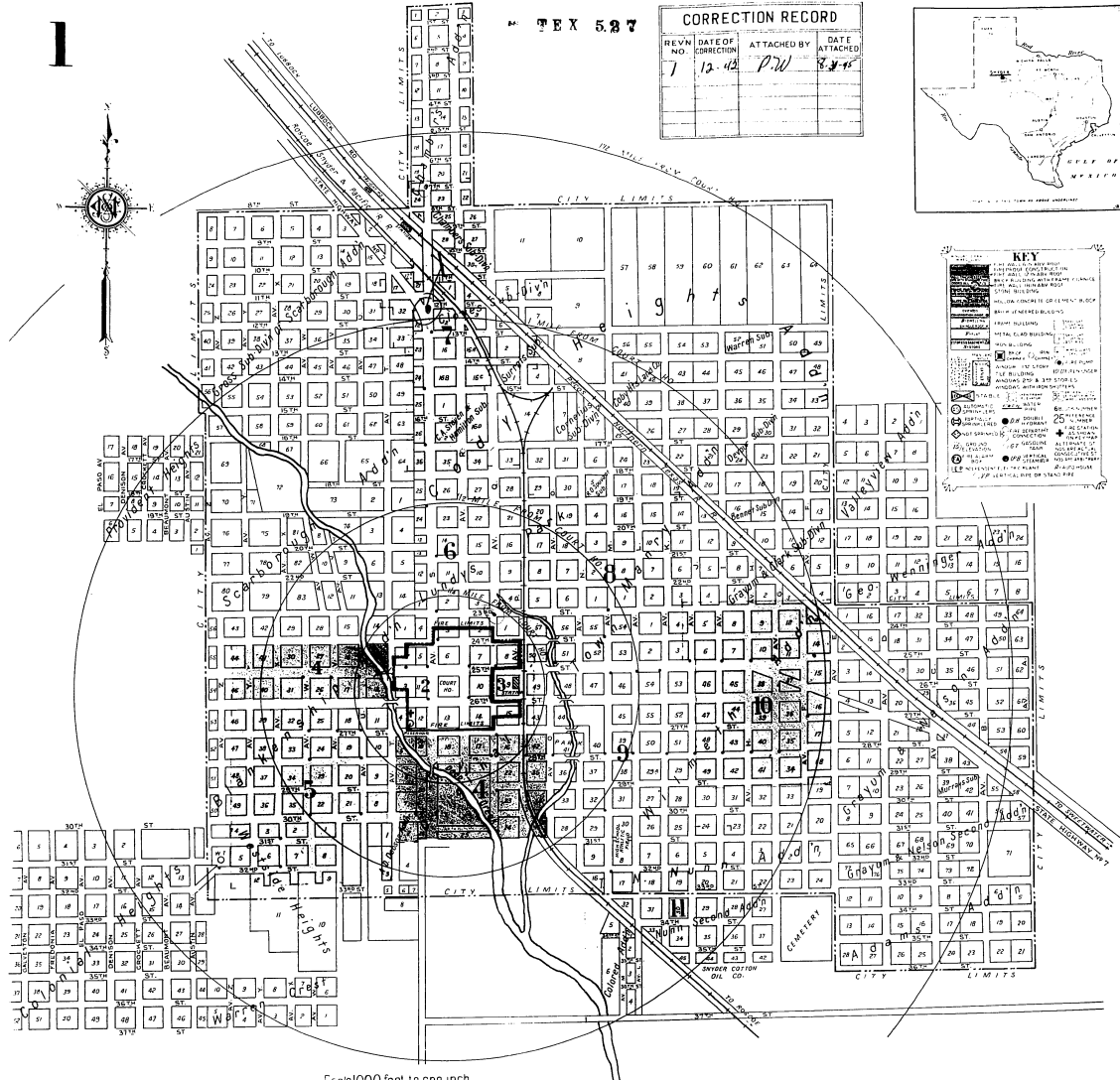


TEX 537

REV.	NO.	DATE OF CORRECTION	ATTACHED BY	DATE ATTACHED
1	13	4/2	P.W.	3/24



ALL RIGHTS RESERVED. NO PART OF THIS MAP MAY BE REPRODUCED IN ANY FORM WITHOUT WRITTEN PERMISSION FROM THE SANBORN MAP COMPANY.



Scale 1000 feet to one inch (820' x 1")

	PAVING	Approximately 20 miles of asphalt and gravel.
	GRADES	Rolling.
	PUBLIC LIGHTS	Electric.
	WATER FACILITIES	See descriptive text on page 49.
	FIRE DEPARTMENT	See descriptive text on page 49.
	FIRE-RESISTIVE ROOFING ORDINANCE	See descriptive text on page 49.

PAVING—Approximately 20 miles of asphalt and gravel.
GRADES—Rolling.
PUBLIC LIGHTS—Electric.

WATER FACILITIES
Municipally owned. Source from 6 wells, 160' deep. Gravity and direct pressure system. 1 concrete reservoir, capacity 150,000 gallons, located at Pump Station and lead with business section. 1 Day-Western electric rotary pump, capacity 130 gallons per minute. 2 Pacific electric rotary pumps, capacity 380 gallons per minute each. 2 electric pump jacks, not used. 1 Dayton-Dowd electric centrifugal pump, capacity 500 gallons per minute. 1 Cameron electric centrifugal pump, capacity 250 gallons per minute. 1 Smith-Valle triplex pump, size 1 1/2", capacity 250 gallons per minute, driven by oil engine. 1 water tank, capacity 100,000 gallons, elevated 100' to base of tank and base of tank being 160' above business section.

5,000 miles of water mains. 62 double and 2 triple hydrants. Average daily consumption 100,000 gallons. Domestic and fire pressure 60 lbs.

FIRE DEPARTMENT
Volunteer company. 1 members. 1 chief, 1 assistant chief, and 19 men, paid per fire. 1 driver, fully paid, lives at Fire Station. 1 station.

1 Southern triple combination truck with 500 gallon per minute pump, 1,250' 2 1/2" hose, one 80 gallon booster tank with 100' 1" hose, one 12' roof ladder, one 24' extension ladder, two 3 gallon chemical tanks and minor equipment. 1 International hose truck with 800' 2 1/2" hose, one 30 gallon chemical tank with 100' 1" hose, one 12' roof ladder and one 24' extension ladder.

Fire alarm by telephones. General alarm by electric siren.

FIRE-RESISTIVE ROOFING ORDINANCE.
Ordinance prohibits wooden shingle roofs in Fire Limits Only.

INDEX

STREETS	S	SEVENTH	E	WEST	SEVENTH	SEVENTH	SPECIALS	SEVENTH
Avenue E, 10							Methodist Episcopal Church (South), 4	
Avenue F, 2300-2400							Mt. Olive Baptist Church (Colored), 11	
Avenue G, 2300-2400								
Avenue H, 3010-3300								
Avenue I, 2300-2415								
Avenue J, 2500-2600								
Avenue K, 1810-2415								
Avenue L, 2500-3015								
Avenue M, 1810-2415								
Avenue N, 3100-3200								
Avenue O, 2500-3015								
Avenue P, 1200-1300								
Avenue Q, 801-1115								
Eighteenth, 1700-1904								
Nineteenth, 1000-1515								
Twentieth, 1000-1515								
Twenty-first, 1000-1515								
Twenty-second, 1000-1515								
Twenty-third, 1000-1515								
Twenty-fourth, 1000-1515								
Twenty-fifth, 1000-1515								
Twenty-sixth, 1000-1515								
Twenty-seventh, 1000-1515								
Twenty-eighth, 1000-1515								
Twenty-ninth, 1000-1515								
Thirtieth, 1000-1515								
Thirty-first, 1000-1515								
Thirty-second, 1000-1515								
Thirty-third, 1000-1515								
Thirty-fourth, 1000-1515								
Thirty-fifth, 1000-1515								
Thirty-sixth, 1000-1515								
Thirty-seventh, 1000-1515								
Thirty-eighth, 1000-1515								
Thirty-ninth, 1000-1515								
Fortieth, 1000-1515								
Forty-first, 1000-1515								
Forty-second, 1000-1515								
Forty-third, 1000-1515								
Forty-fourth, 1000-1515								
Forty-fifth, 1000-1515								
Forty-sixth, 1000-1515								
Forty-seventh, 1000-1515								
Forty-eighth, 1000-1515								
Forty-ninth, 1000-1515								
Fiftieth, 1000-1515								
Alamo Hotel, 1601-2011								
Assembly of God, 1800-1904								
Burton-Lingo Co., Lumber Shed, 1001-1003								
City Hall, 1800-1904								
Church of Christ, 1800-1904								
Continental Oil Co., 1800-1904								
County Court House, 1800-1904								
Ely, Arnold & Ely, Gin, Cotton Gin, 500-915								
Farmers Gin, Cotton Gin, 500-915								
Fire Department, 1801-1904								
First Baptist Church, 2000-2500								
Gulf Refining Co., 1500-1904								
Higginbotham Bartlett Co., Lumber Yard, 500-915								
Humble Oil and Refining Co., 1500-1904								
Incinerator, 1000-1500								
Public School (Colored), 1801-1904								
Public School (White), 1801-1904								
Public School, 1801-1904								
Presbyterian Church, 2000-2500								
Stinson's Camp, Tourist Camp, 500-915								
Stratford Hotel, 1801-1904								
Texas Co., 1500-1904								
Union Tabernacle First Christian Ch., 500-915								
Wilkeson, O. L., Lumber Co., 500-915								
Wilkinson-Clemens, Feed Mill and Coal Yard, 500-915								
Wooten, H. O., Wholesale Groceries, 500-915								

* Indicates only one side of Street shown.

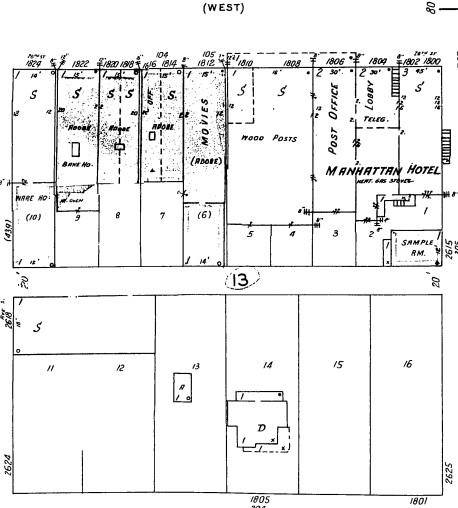
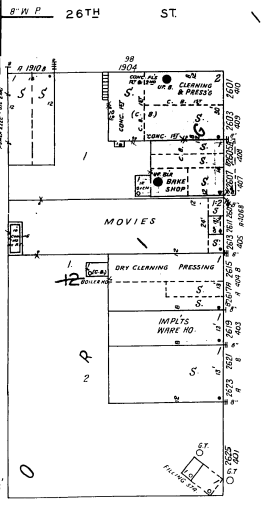
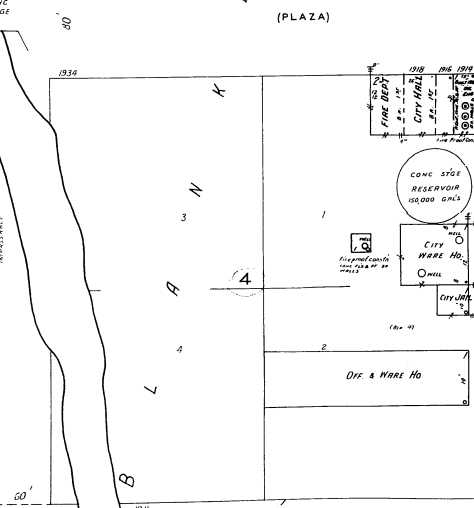
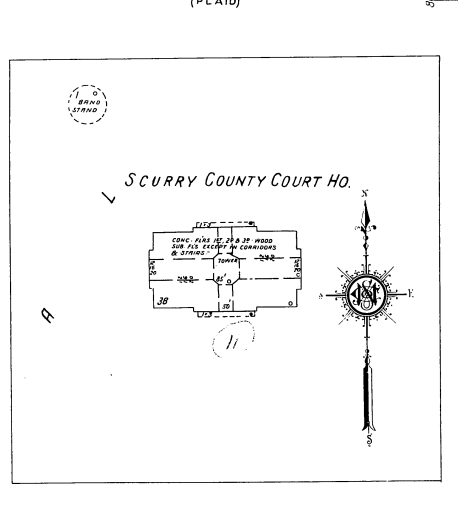
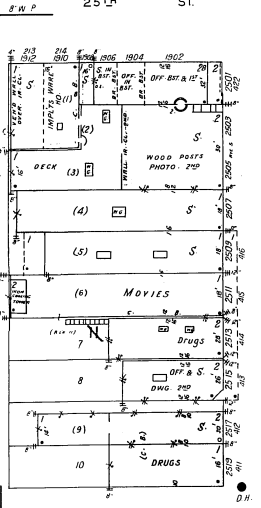
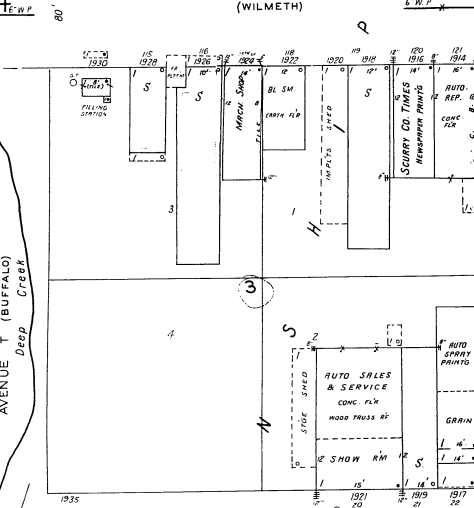
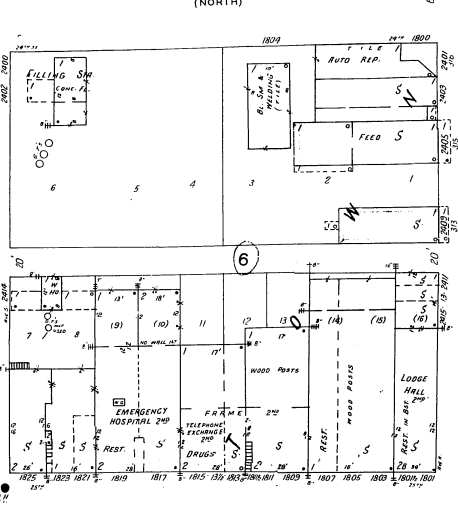
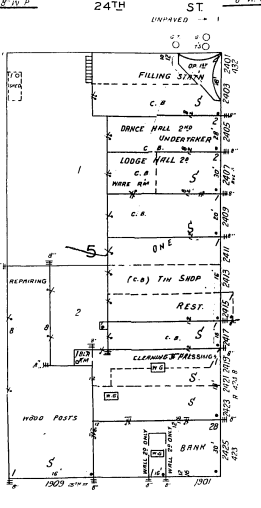
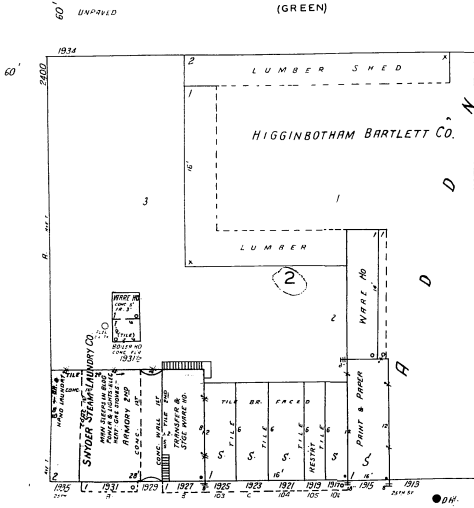
SNYDER, TEX.
JAN. 1936

50

TEX 527

6

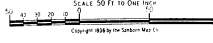
2



5

4

3



3

6

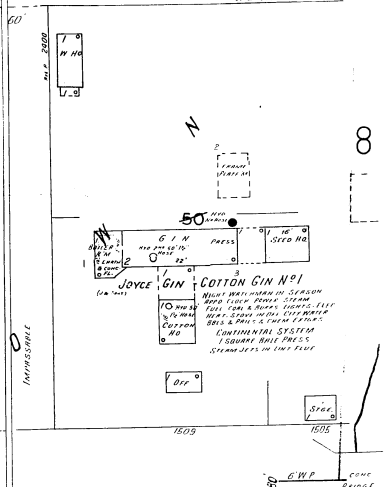
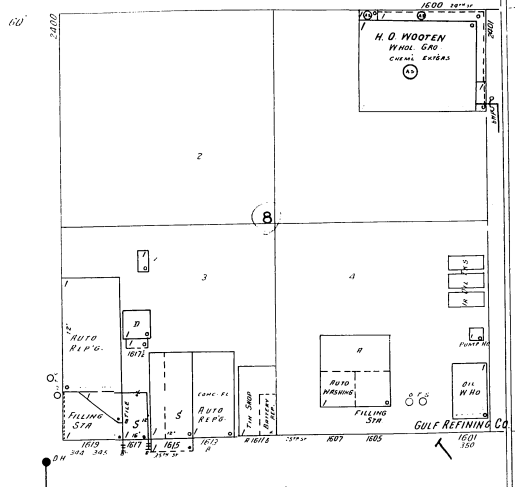
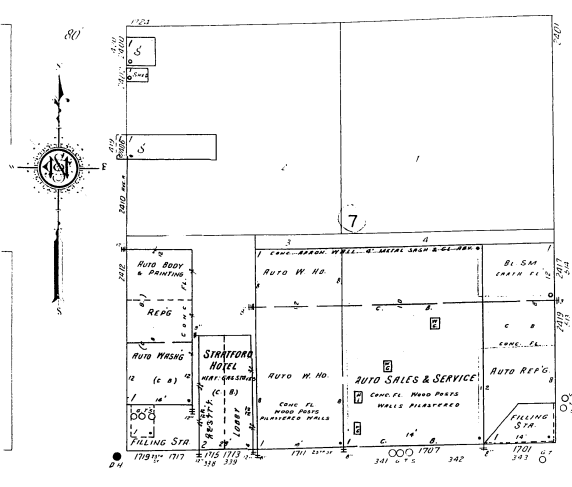
EX 527

8

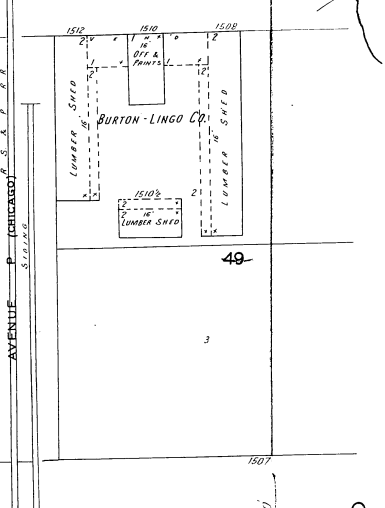
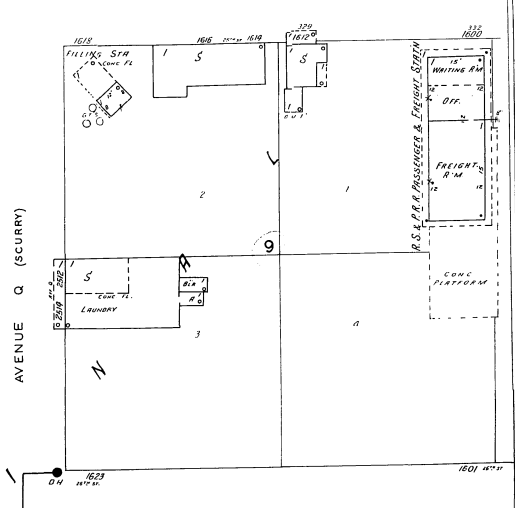
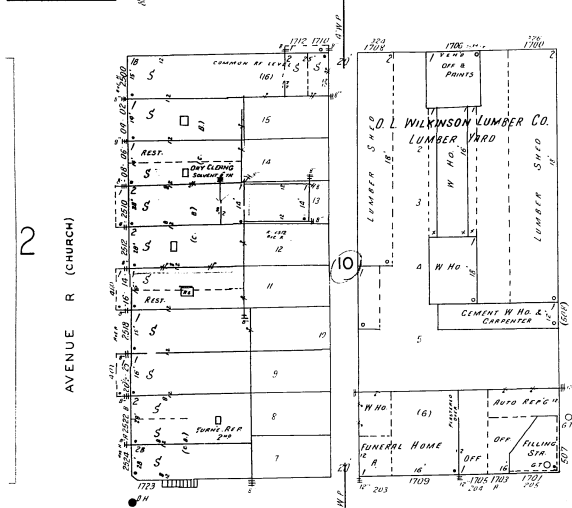
3

24TH ST. (NORTH)

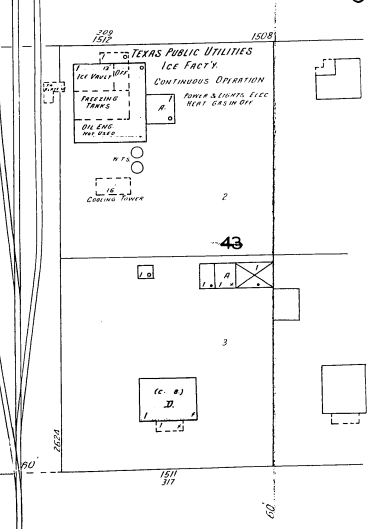
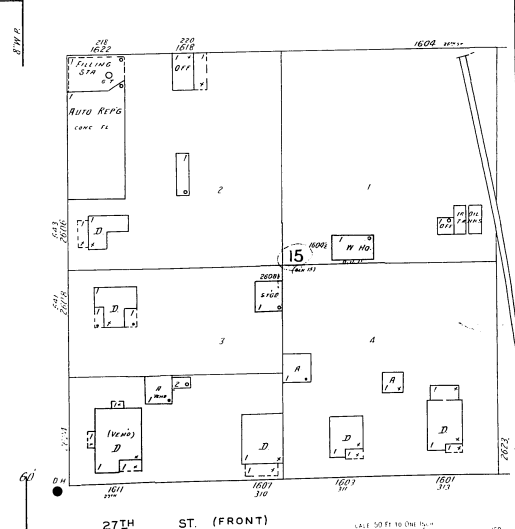
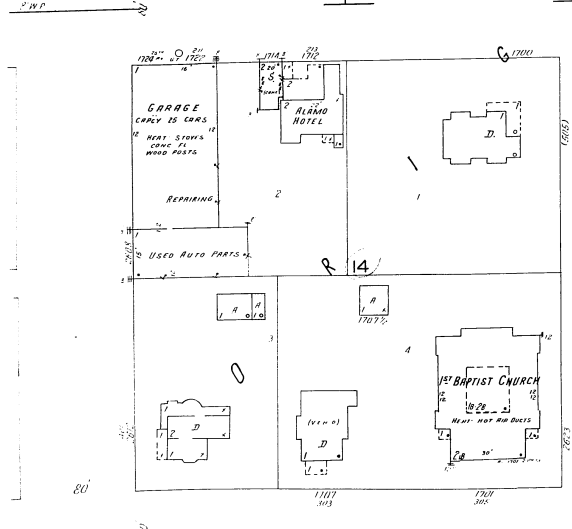
51



25TH ST. (PLAID)



26TH ST. (WEST)



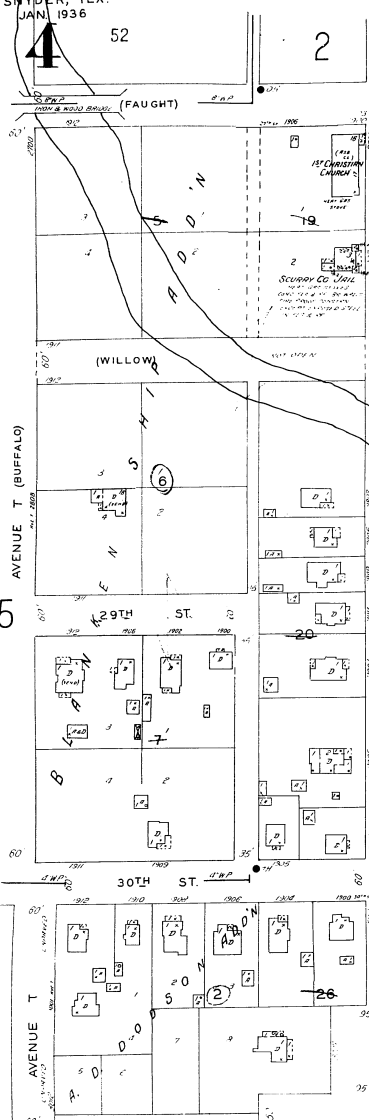
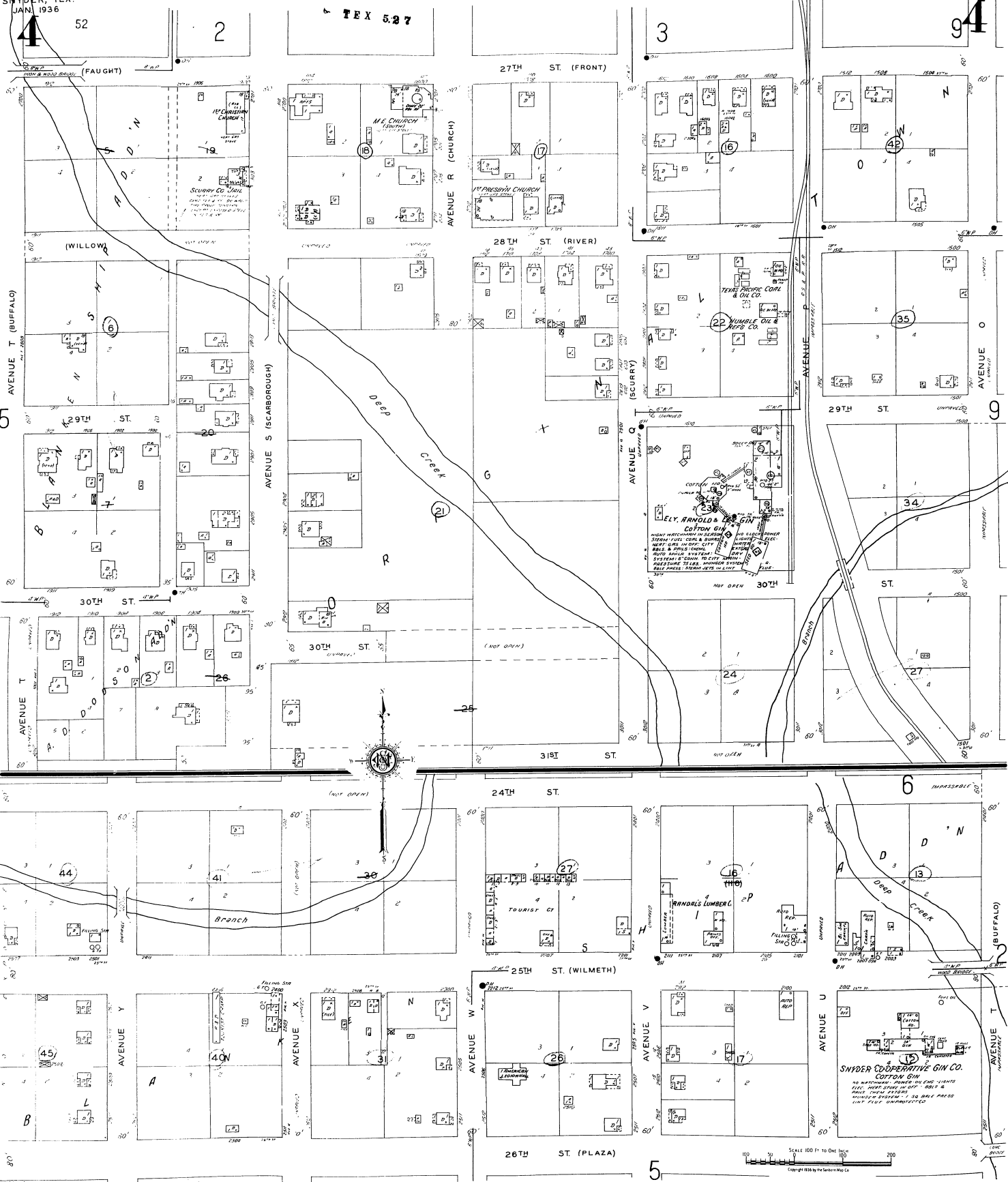
27TH ST. (FRONT)

9

4

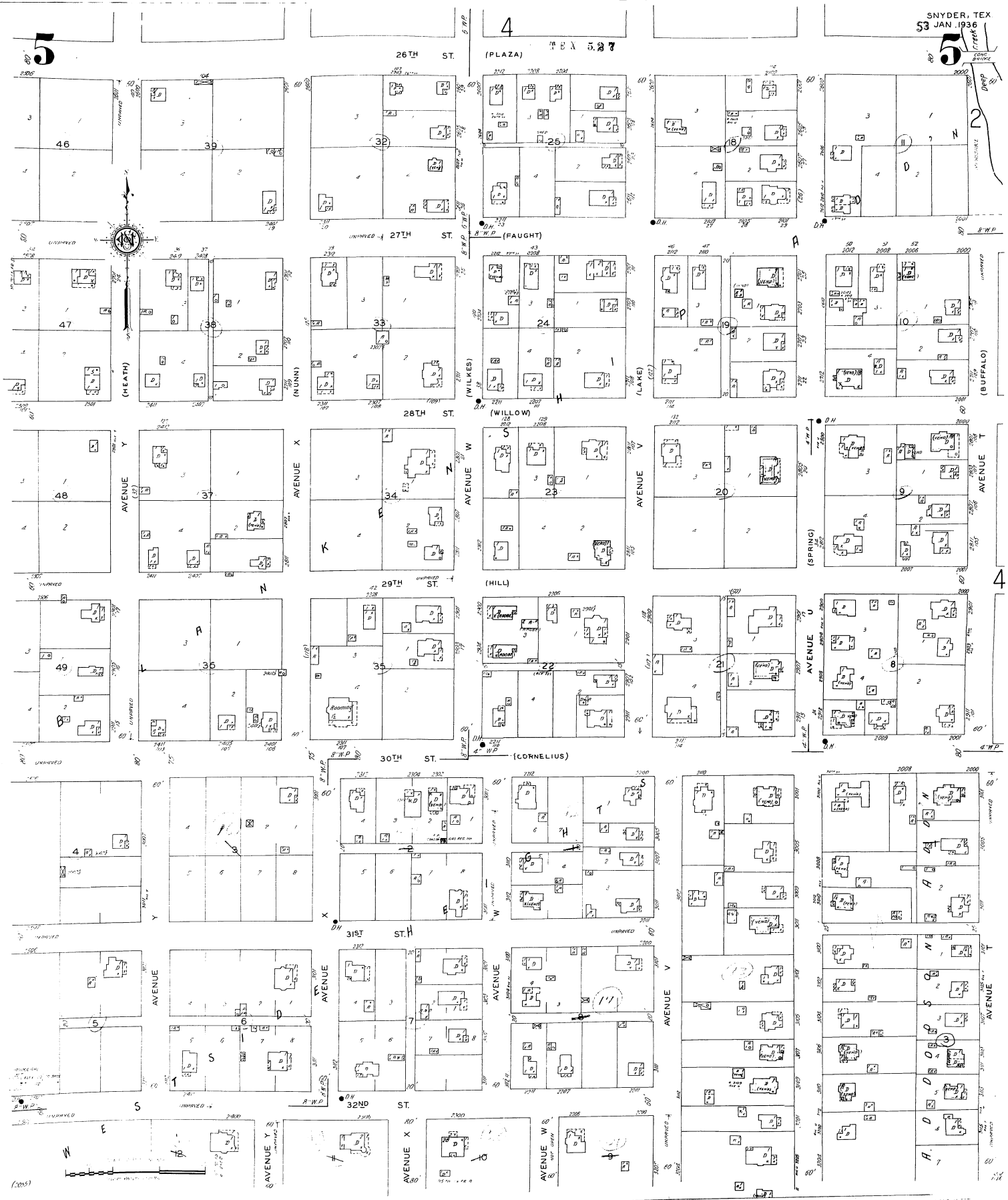
SNYDER, TEX.
JAN. 1936

TEX 527



20'

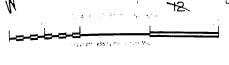
(2052)

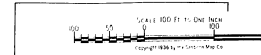
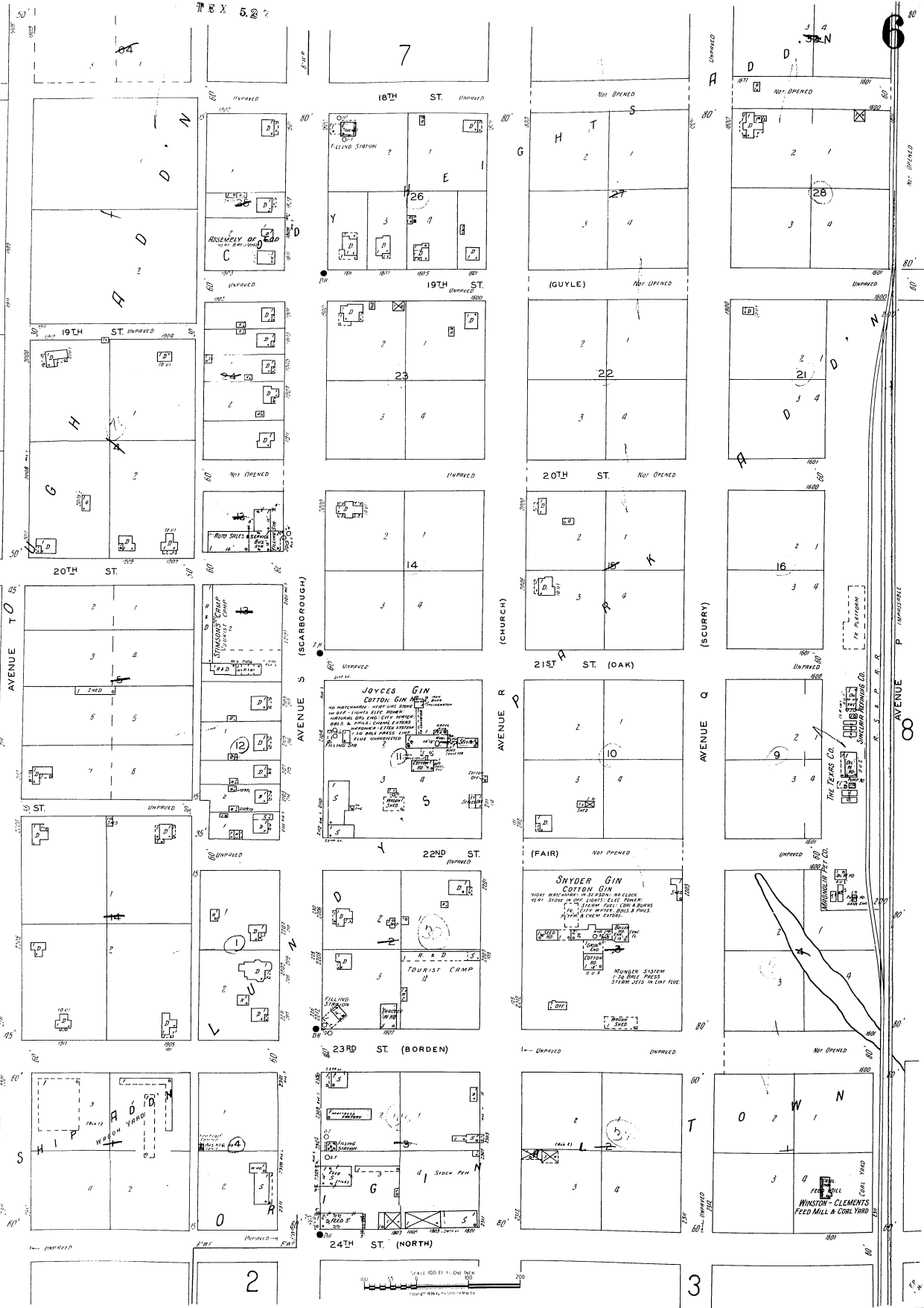
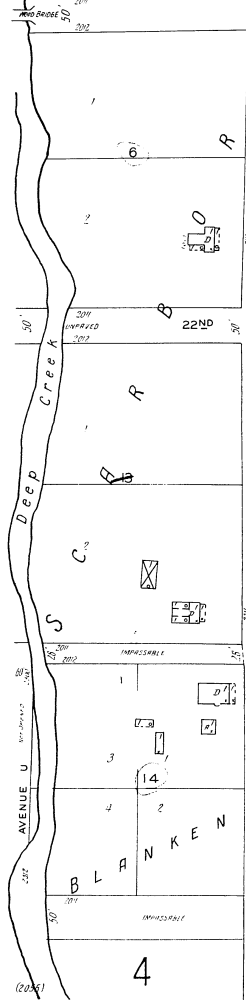
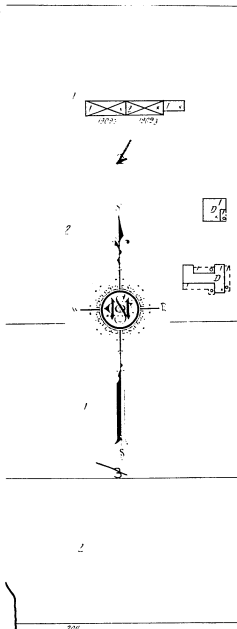


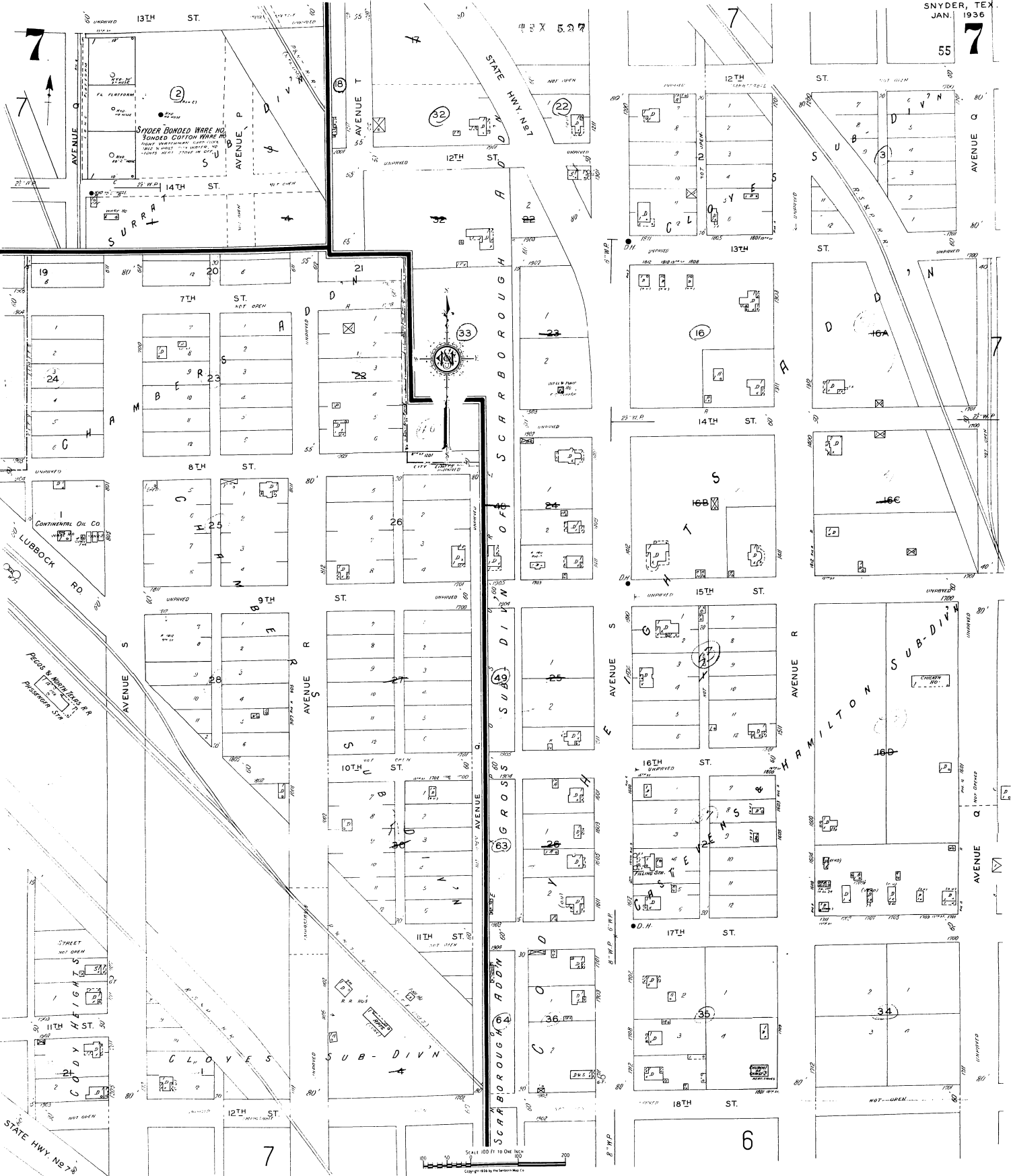
4

5

4







SNYDER, TEX.
JAN. 1936

56

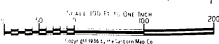
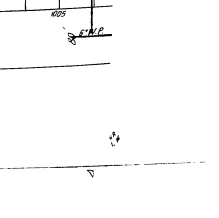
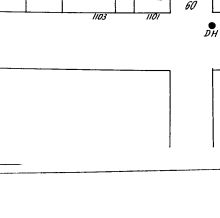
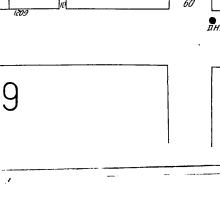
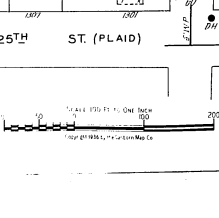
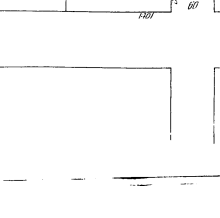
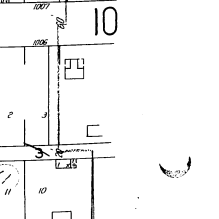
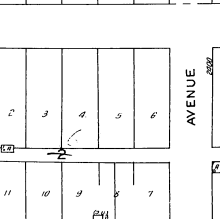
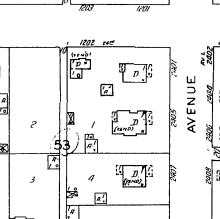
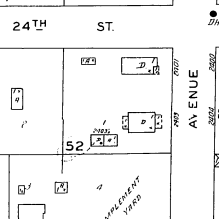
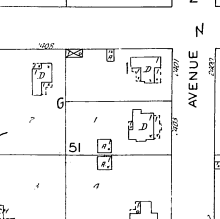
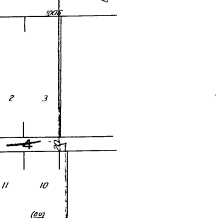
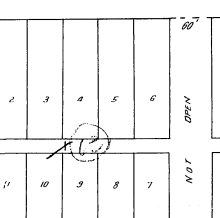
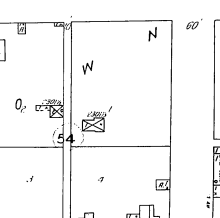
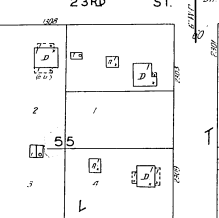
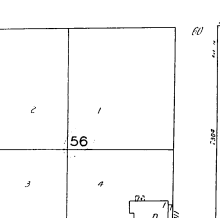
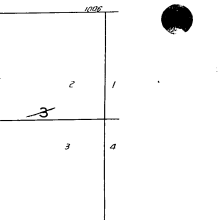
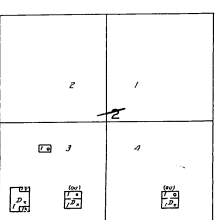
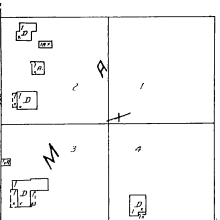
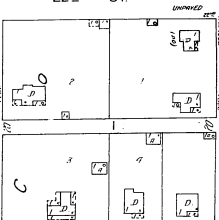
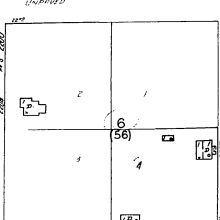
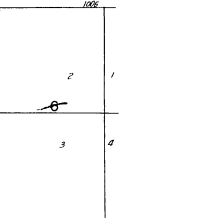
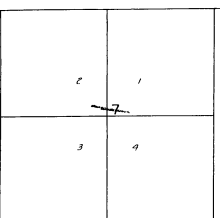
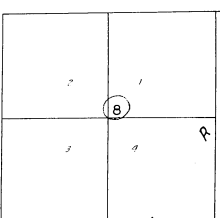
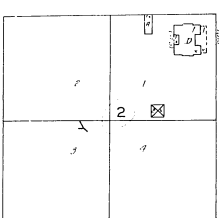
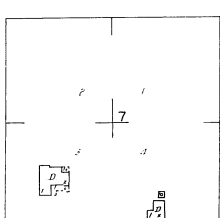
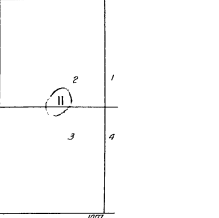
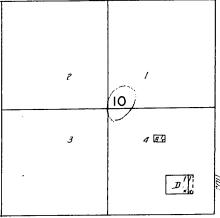
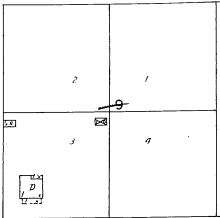
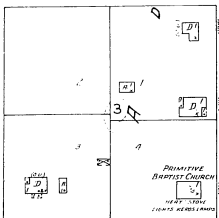
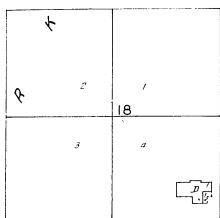
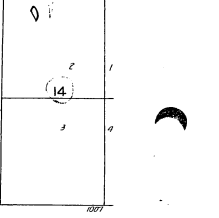
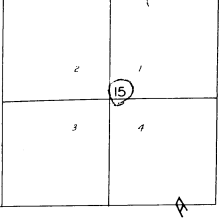
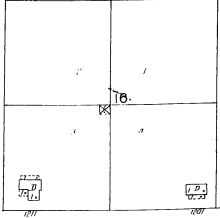
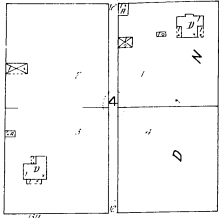
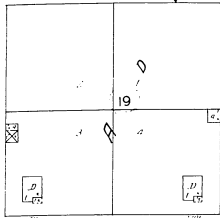
RIO STUYVANT SUB-DIV

TEX 5,27

19TH ST. UNPAVED

NOT OPEN

NOT OPEN

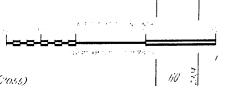
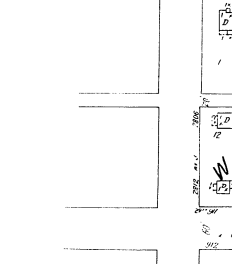
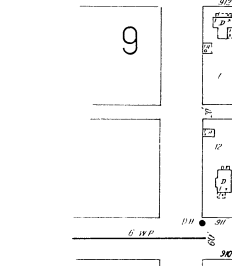
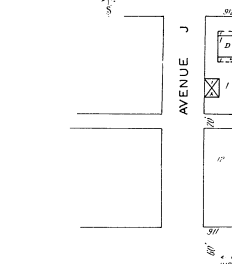
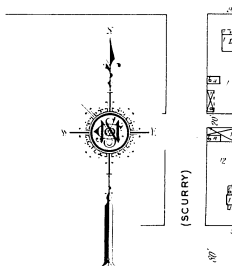
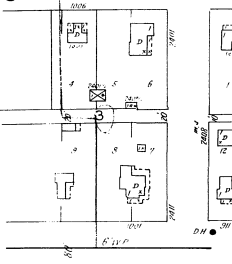
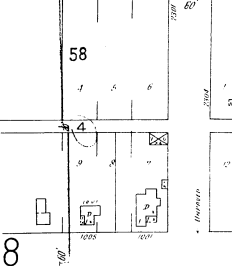


9

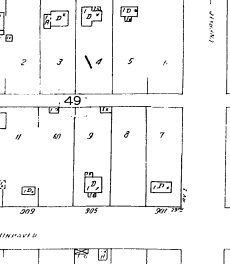
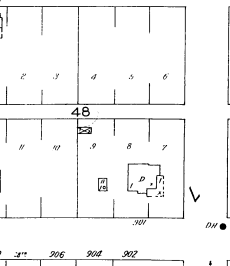
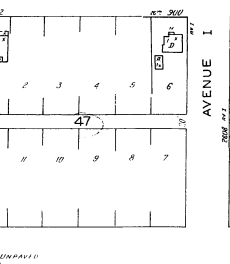
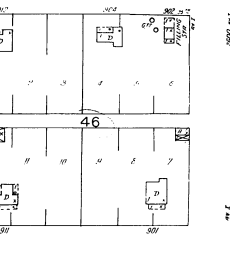
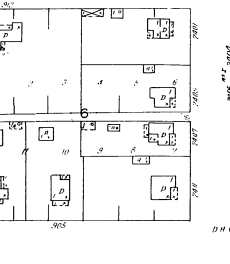
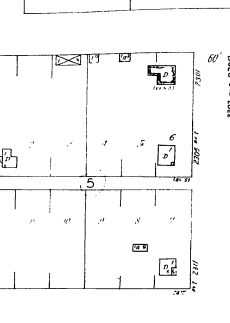
10



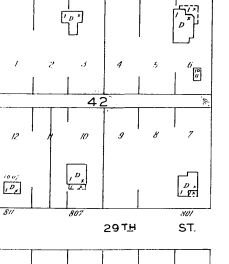
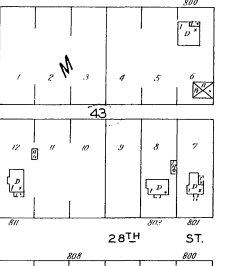
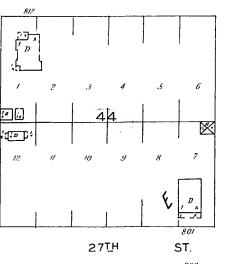
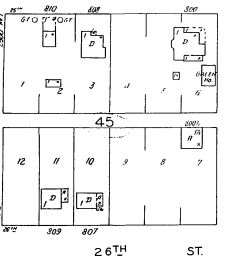
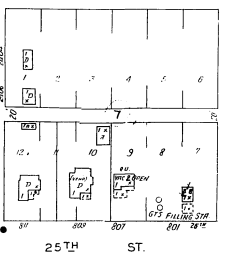
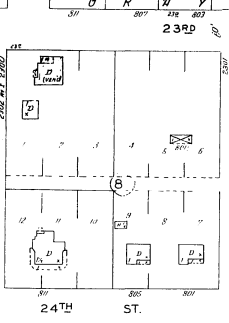
10



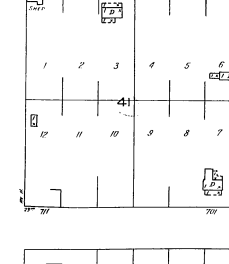
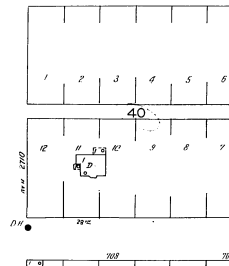
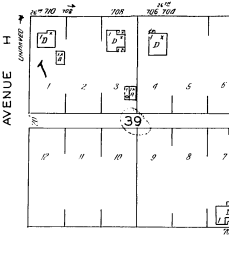
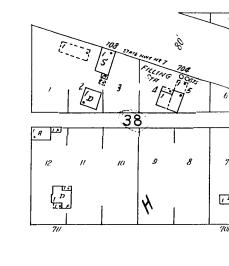
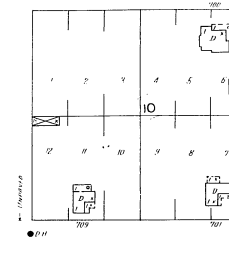
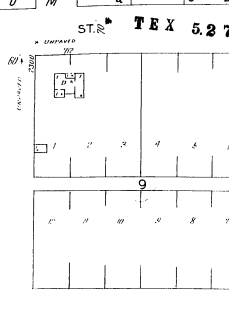
M R N AV. J



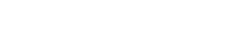
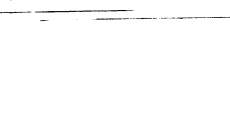
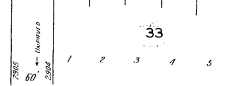
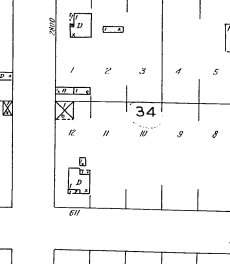
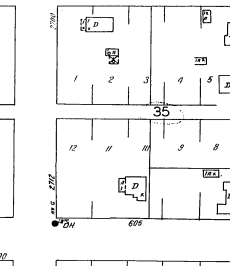
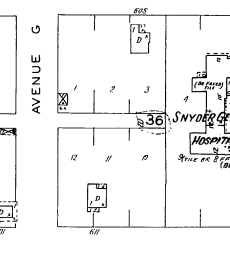
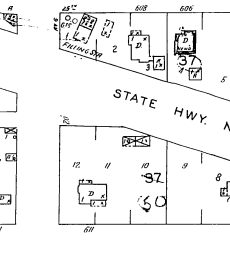
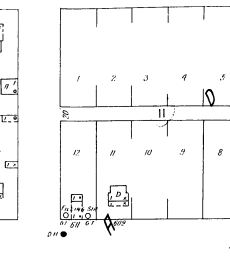
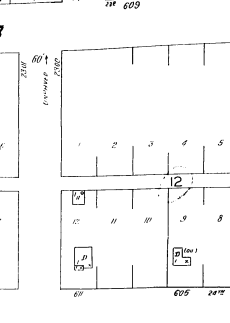
H O D N AV. I



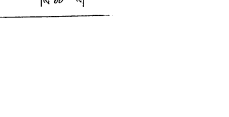
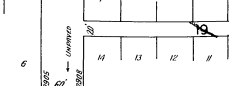
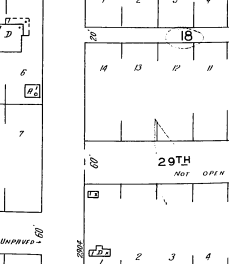
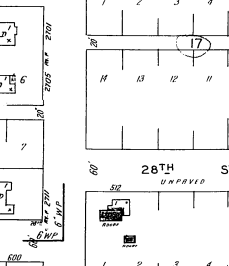
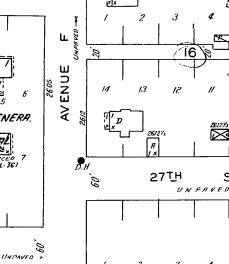
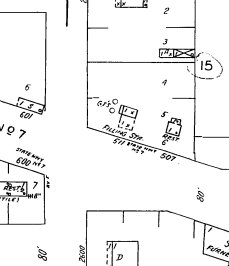
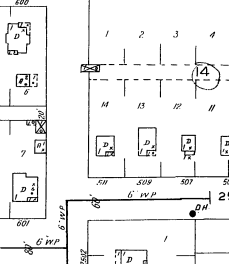
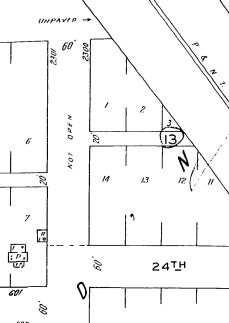
AV. H & S C L A AV. K



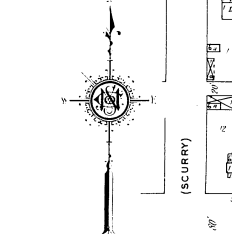
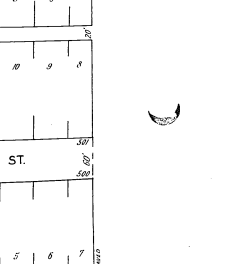
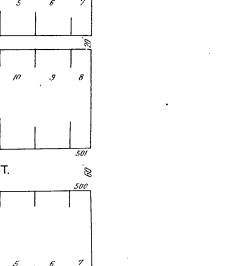
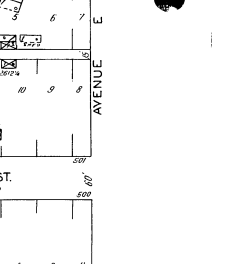
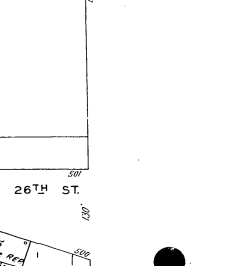
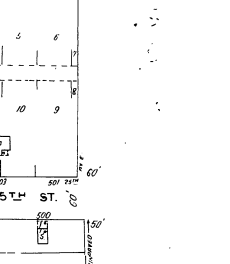
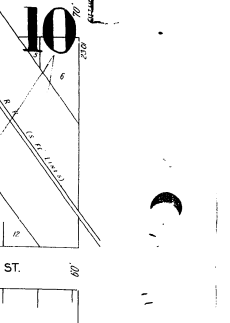
AV. G AV. F



AV. E



AV. D



AVENUE J (SCURRY)

AVENUE I

AVENUE H

AVENUE G

AVENUE F

AVENUE E

24TH ST.

25TH ST.

26TH ST.

27TH ST.

28TH ST.

29TH ST.

23RD ST.

24TH ST.

25TH ST.

26TH ST.

27TH ST.

28TH ST.

29TH ST.

23RD ST.

24TH ST.

25TH ST.

26TH ST.

27TH ST.

28TH ST.

29TH ST.

23RD ST.

STATE HWY. NO 7

SNYDER GENERAL

UNPAVED

UNPAVED

UNPAVED

UNPAVED

UNPAVED

24TH ST.

25TH ST.

26TH ST.

27TH ST.

28TH ST.

29TH ST.

23RD ST.

24TH ST.

25TH ST.

26TH ST.

27TH ST.

28TH ST.

29TH ST.

23RD ST.

(Cross)

11

9

TEX 527

W I L M E T N
24

59



SCALE 100 FT TO ONE INCH
 COMPLETELY REPRODUCED

TERRITORY SHOWN ON THIS SECTION
 OF SHEET OUTSIDE OF
 CORPORATE LIMITS

SNYDER COTTON OIL CO.
 COTTON OIL MILL

NOTE: WATCHMAN BARR DITCH
 HOWEVER STREETS BUILT AND NOT
 LOTS BUILT IN 1911-1912 &
 LOTS 2 & 3 ONLY EXTEND UNITS
 FROM S. 35TH ST. TO S. 36TH ST.
 DEPART HUNTER, DICE & HANSEN
 CASE NO. 400

37TH ST.

UNPAID 59