

STARR COUNTY BURIAL GROUNDS



San Carlos Cemetery (San Carlos Ranch on FM 649 North of El Sauz, TX)

PAGES 2 THRU 6 = INDEX

PAGES 7 THRU 111 = DRIVING DIRECTIONS

STARR COUNTY BURIAL GROUNDS

<u>SR-C054</u>	<u>MAP</u>	<u>Agua Dulce PG 7</u>
<u>SR-C072</u>	<u>MAP</u>	<u>Alcazar Graves PG 8</u>
<u>SR-C010</u>	<u>MAP</u>	<u>Alvarado Hilario Sr. Memorial PG 9</u>
<u>SR-C096</u>	<u>MAP</u>	<u>Alvarez Domingo PG 10</u>
<u>SR-C055</u>	<u>MAP</u>	<u>Buena Vista PG 11</u>
<u>SR-C091</u>	<u>MAP</u>	<u>Cantu (La Grulla, Tx) PG 12</u>
<u>SR-C003</u>	<u>MAP</u>	<u>Catholic Cemetery PG 13</u>
<u>SR-C053</u>	<u>MAP</u>	<u>Chapeno PG 14</u>
<u>SR-C036</u>	<u>MAP</u>	<u>Coyote PG 15</u>
<u>SR-C100</u>	<u>MAP</u>	<u>Cruz (El Centro) PG 16</u>
<u>SR-C085</u>	<u>MAP</u>	<u>De La Garza Family (Arturo) PG 17</u>
<u>SR-C061</u>	<u>MAP</u>	<u>Dreamland PG 18</u>
<u>SR-C050</u>	<u>MAP</u>	<u>E. A. G. Gravesite PG 19</u>
<u>SR-C068</u>	<u>MAP</u>	<u>El Sauz PG 20</u>
<u>SR-C038</u>	<u>MAP</u>	<u>Elizondo PG 21</u>
<u>SR-C042</u>	<u>MAP</u>	<u>Escobares (San Antonio De Escobares PG 22</u>
<u>SR-C101</u>	<u>MAP</u>	<u>Fronton (New) PG 23</u>
<u>SR-C046</u>	<u>MAP</u>	<u>Fronton (Old) PG 24</u>
<u>SR-C039</u>	<u>MAP</u>	<u>Garcia (Celedino) PG 25</u>
<u>SR-C064</u>	<u>MAP</u>	<u>Garciasville PG 26</u>
<u>SR-C095</u>	<u>MAP</u>	<u>Garza PG 27</u>
<u>SR-C080</u>	<u>MAP</u>	<u>Garza, Nieves Sr. PG 28</u>

STARR COUNTY BURIAL GROUNDS

<u>SR-C016</u>	<u>MAP</u>	<u>Gonzales PG 29</u>
<u>SR-C081</u>	<u>MAP</u>	<u>Guerra , Nicasio (Family) PG 30</u>
<u>SR-C040</u>	<u>MAP</u>	<u>Guerra, Gerado Gravesite (El Caballo) PG 31</u>
<u>SR-C090</u>	<u>MAP</u>	<u>Gutierrez (La Victoria) PG 32</u>
	<u>MAP</u>	<u>Hinojosa PG 33</u>
<u>SR-C082</u>	<u>MAP</u>	<u>Huisache PG 34</u>
	<u>MAP</u>	<u>Juarez PG 35</u>
<u>SR-C063</u>	<u>MAP</u>	<u>La Casita PG 36</u>
<u>SR-C094</u>	<u>MAP</u>	<u>La Gloria (Across from Post Office) PG 37</u>
	<u>MAP</u>	<u>La Paz PG 38</u>
<u>SR-C071</u>	<u>MAP</u>	<u>La Reforma PG 39</u>
<u>SR-C020</u>	<u>MAP</u>	<u>La Reforma (Old) PG 40</u>
<u>SR-C083</u>	<u>MAP</u>	<u>Las Escobas Ranch PG 41</u>
	<u>MAP</u>	<u>Las Islas Ranch Grave # 1 PG 42</u>
<u>SR-C103</u>	<u>MAP</u>	<u>Las Islas Ranch Grave # 2 PG 43</u>
<u>SR-C065</u>	<u>MAP</u>	<u>Longoria PG 44</u>
<u>SR-C075</u>	<u>MAP</u>	<u>Lopez (Rio Grande City) PG 45</u>
<u>SR-C013</u>	<u>MAP</u>	<u>Lopez (Arkansas City) PG 46</u>
<u>SR-C058</u>	<u>MAP</u>	<u>Los Arrierous PG 47</u>
<u>SR-C043</u>	<u>MAP</u>	<u>Los Barreras PG 48</u>
<u>SR-C045</u>	<u>MAP</u>	<u>Los Garzas PG 49</u>
<u>SR-C005</u>	<u>MAP</u>	<u>Los Laureles (Old Santa Elena) PG 50</u>
<u>SR-C041</u>	<u>MAP</u>	<u>Los Saenz PG 51</u>

STARR COUNTY BURIAL GROUNDS

<u>SR-C060</u>	<u>MAP</u>	<u>Los Velas PG 52</u>
<u>SR-C074</u>	<u>MAP</u>	<u>Los Velas Soldier's PG 53</u>
<u>SR-C007</u>	<u>MAP</u>	<u>Montalvo PG 54</u>
<u>SR-C026</u>	<u>MAP</u>	<u>Montalvo, Francisco Jr (Gravesite) PG 55</u>
<u>SR-C011</u>	<u>MAP</u>	<u>Naranja PG 56</u>
<u>SR-C022</u>	<u>MAP</u>	<u>Olivares PG 57</u>
<u>SR-C059</u>	<u>MAP</u>	<u>Olmos PG 58</u>
<u>SR-C017</u>	<u>MAP</u>	<u>Pena (Delmita) PG 59</u>
<u>SR-C018</u>	<u>MAP</u>	<u>Pena (Niceforo) PG 60</u>
<u>SR-C107</u>	<u>MAP</u>	<u>Pena (San Isidro) PG 61</u>
<u>SR-C019</u>	<u>MAP</u>	<u>Pena Rafael PG 62</u>
<u>SR-C084</u>	<u>MAP</u>	<u>Queen of Peace Memorial Park PG 63</u>
<u>SR-C025</u>	<u>MAP</u>	<u>Rancho Viejo PG 64</u>
<u>SR-C099</u>	<u>MAP</u>	<u>Requenez PG 65</u>
<u>SR-C001</u>	<u>MAP</u>	<u>Rio Grance City County Cem PG 66</u>
<u>SR-C002</u>	<u>MAP</u>	<u>Rio Grance City Downtown Historic PG 67</u>
<u>SR-C106</u>	<u>MAP</u>	<u>Rodriguez PG 68</u>
<u>SR-C077</u>	<u>MAP</u>	<u>Rodriguez (Delia Memorial) PG 69</u>
<u>SR-C012</u>	<u>MAP</u>	<u>Rojas PG 70</u>
<u>SR-C048</u>	<u>MAP</u>	<u>Roma City PG 71</u>
<u>SR-C098</u>	<u>MAP</u>	<u>Saenz (La Gloria) PG 72</u>
<u>SR-C089</u>	<u>MAP</u>	<u>Saenz (La Victoria) PG 73</u>
<u>SR-C051</u>	<u>MAP</u>	<u>Saenz (Santa Catarina) PG 74</u>

STARR COUNTY BURIAL GROUNDS

<u>SR-C030</u>	<u>MAP</u>	<u>Saenz Pedro A Memorial (La Gloria) PG 75</u>
<u>SR-C057</u>	<u>MAP</u>	<u>Salineno PG 76</u>
<u>SR-C092</u>	<u>MAP</u>	<u>San Blas PG 77</u>
<u>SR-C069</u>	<u>MAP</u>	<u>San Carlos PG 78</u>
	<u>MAP</u>	<u>San Isidro PG 79</u>
<u>SR-C033</u>	<u>MAP</u>	<u>San Jose PG 80</u>
<u>SR-C067</u>	<u>MAP</u>	<u>San Vicente PG 81</u>
<u>SR-C032</u>	<u>MAP</u>	<u>Santa Anna PG 82</u>
<u>SR-C034</u>	<u>MAP</u>	<u>Santa Catarina PG 83</u>
<u>SR-C023</u>	<u>MAP</u>	<u>Santa Cruz PG 84</u>
<u>SR-C004</u>	<u>MAP</u>	<u>Santa Elena PG 85</u>
<u>SR-C035</u>	<u>MAP</u>	<u>Santa Maria PG 86</u>
<u>SR-C088</u>	<u>MAP</u>	<u>Santa Rosa Ranch PG 87</u>
<u>SR-C021</u>	<u>MAP</u>	<u>Soledad PG 88</u>
<u>SR-C086</u>	<u>MAP</u>	<u>Solis, Ruben (La Grulla,Tx) PG 89</u>
<u>SR-C066</u>	<u>MAP</u>	<u>Solizes (La Grulla, Tx PG 90</u>
<u>SR-C076</u>	<u>MAP</u>	<u>St John PG 91</u>
<u>SR-C031</u>	<u>MAP</u>	<u>Tanque Alegre PG 92</u>
<u>SR-C097</u>	<u>MAP</u>	<u>Taurino Laurel Memorial PG 93</u>
<u>SR-C073</u>	<u>MAP</u>	<u>Trevino (Rio Grande City) PG 94</u>
<u>SR-C093</u>	<u>MAP</u>	<u>Trevino (Santa Catarina PG 95</u>
<u>SR-C056</u>	<u>MAP</u>	<u>Una De Gato PG 96</u>
<u>SR-C047</u>	<u>MAP</u>	<u>Unknown (Arroyo de los Mudos) (La Minita) PG 97</u>

STARR COUNTY BURIAL GROUNDS

<u>SR-C015</u>	<u>MAP</u>	<u>Unknown (S Arkansas City) PG 98</u>
<u>SR-C070</u>	<u>MAP</u>	<u>Unknown (S of Hwy 83) PG 99</u>
<u>SR-C027</u>	<u>MAP</u>	<u>Unknown Name PG 100</u>
<u>SR-C028</u>	<u>MAP</u>	<u>Unknown Name PG 101</u>
<u>SR-C029</u>	<u>MAP</u>	<u>Unknown Name PG 102</u>
<u>SR-C044</u>	<u>MAP</u>	<u>Unknown Name PG 103</u>
<u>SR-C049</u>	<u>MAP</u>	<u>Unknown Name PG 104</u>
<u>SR-C102</u>	<u>MAP</u>	<u>Unknown Name PG 105</u>
<u>SR-C009</u>	<u>MAP</u>	<u>Unknown Name PG 106</u>
<u>SR-C087</u>	<u>MAP</u>	<u>Unknown Name PG 107</u>
<u>SR-C006</u>	<u>MAP</u>	<u>Unknown Name (1.3 miles east of 755) PG 108</u>
<u>SR-C078</u>	<u>MAP</u>	<u>Unknown Name(Adjacent to Soledad) PG 109</u>
<u>SR-C105</u>	<u>MAP</u>	<u>Villarreal PG 110</u>
<u>SR-C079</u>	<u>MAP</u>	<u>Villarreal, Nativdad PG 111</u>

STARR COUNTY BURIAL GROUNDS

Agua Dulce Cemetery

SR-C054



MAP

N26.68415° W98.96751°

+26° 41' 2.94", -98° 58' 3.04"

**883-961 Las Escobas Rd
Roma, Texas 78584**

(Las Escobas Ranch)

Directions to cemetery: from intersection of US83 and Fm 2098 (southeast of Falcon State Recreation Area), travel north on US83 2.6 miles; turn right/northwest on Loma Blanca Road, travel north 16.5 miles; turn right/east onto access road (dirt); cemetery is 100 meters east.

STARR COUNTY BURIAL GROUNDS

Alcazar Graves

SR-C072



MAP

N26.376293 W98.838068

(135 Old US HWY 83 West)

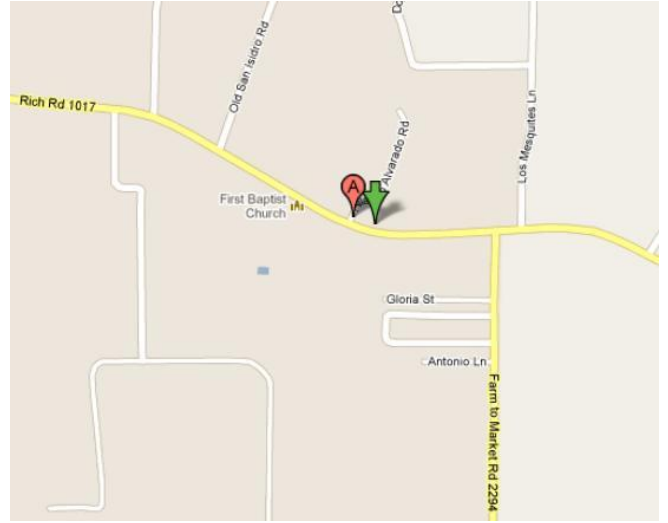
W Bluebonnet St, Rio Grande City, TX 78582, USA

Driving Directions: From US 83 in Rio Grande City, go 0.3 mile southwest on Old US HWY 83 West. Cemetery is on left (southeast) side of road beside house at 135 Old US HWY 83 W. This cemetery is highly endangered. It is not a map feature, and it is located on private property. The cemetery consists of two graves that are marked with locally cast concrete slabs. There are no inscriptions or dates. The graves are not fenced, and the markers have been damaged.

STARR COUNTY BURIAL GROUNDS

Alvarado (Hilario Sr. Memorial)

SR-C010



MAP

N26.71222° W98.43872

+26° 42' 43.99", -98° 26' 19.39"

**2-30 Hilario Alvarado Rd
Santa Elena, TX 78591**

(San Isidro)

Driving Directions: From intersection of US 1017 and FM 2294 in San Isidro, Tx. goes West on 1017 for .29 miles to Hilario Alvarado Rd. The Cemetery is on the right and can be seen from road.

STARR COUNTY BURIAL GROUNDS

Alvarez (Domingo)

SR-C096



MAP

26.570848, -98.647655

+26° 34' 15.05", -98° 38' 51.56"

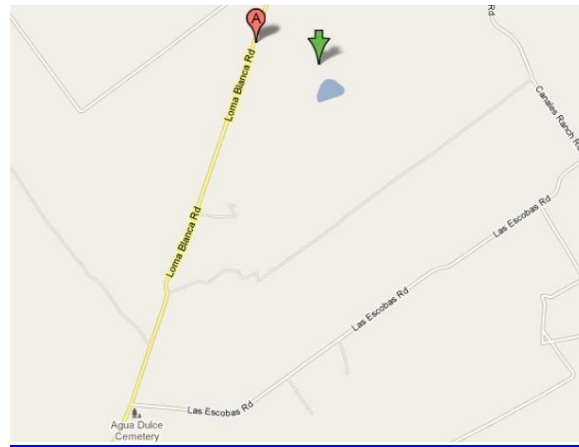
**Farm to Market Road 755
Rio Grande City, TX 78582**

Driving Directions: From intersection of US 83 and FM 755 in Rio Grande City, turn North onto FM 755. Stay on 755 for 16.6 miles (1.9 miles South (SW) of the intersection of 755 and 2294). Cemetery in southeast side of the road and can be seen from FM 755.

STARR COUNTY BURIAL GROUNDS

Buena Vista

SR-C055



MAP

N26.71012 W98.95253

+26° 42' 36.43", -98° 57' 9.11"

**1794-1804 Loma Blanca Rd.
Roma, TX 78584**

Driving Directions: From intersection of US 83 and FM 650 (southwest of Falcon State Recreation Area), travel north on US 83 2.6 miles; turn right at Loma Blanca Rd. and go approx. 18.3 miles northwest (1.6 miles north Las Ecobas Rd.). Turn right at gate (a cemetery sign is posted on gate) just before cattle guard and go 0.2 mile east. At fork, turn right and go 0.1 mile to cemetery. The cemetery is highly endangered. It is a map feature, but it is located in a remote area on private property. The cemetery is fully fenced, but not maintained. There is a cemetery sign with contact information posted on gate at Loma Blanca Rd. There are at least seven marked graves and possibly some unmarked graves. Cemetery features include locally cast concrete, formal marble, hand-wrought steel, and a homemade pipe markers. One grave is enclosed with a combination wood and woven wire fence, which is dilapidated.

STARR COUNTY BURIAL GROUNDS

Cantu (La Grulla TX)

SR-C091



MAP

N26.269571 W98.655392 (

**566-598 Mission St
La Grulla, TX 78548, USA)**

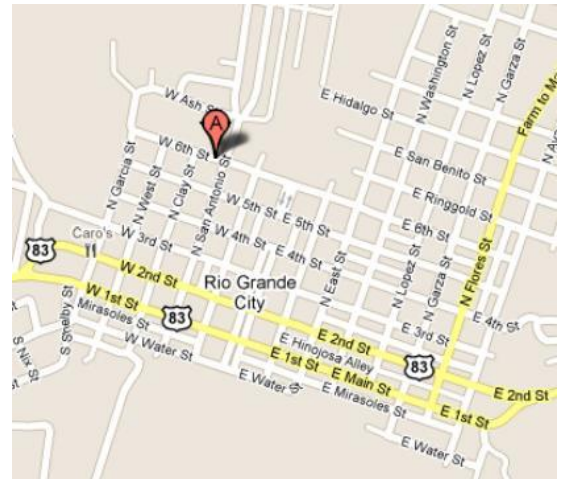
(La Grulla)

Driving Directions: From US 83 in Alto Bonito, go 2.6 miles south on FM 2360 to very end of road in La Grulla. Turn right onto W. PVT Lazaro Solis St. and go 0.6 miles northwest to intersection with Mission St. Turn left onto Mission St. and go 0.1 mile south. Cemetery is on right (west) side of road. This cemetery is adjacent to a USGS map feature (Longoria Cemetery). It is fully fenced, maintained, and very active. It is also accessible to the public and frequently visited. No cemetery signs are posted.

STARR COUNTY BURIAL GROUNDS

Catholic Cemetery

SR-C003



[MAP](#)

N26.38389° W98.82138°

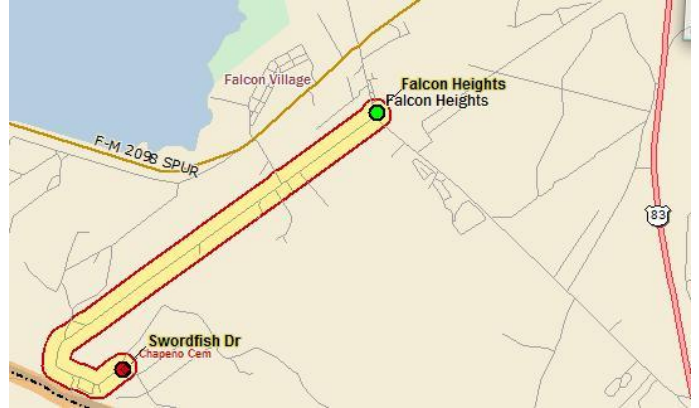
**301-399 W 6th St
Rio Grande City, TX 78582**

Driving Directions: From the intersection of US Hwy 83 (W. 2nd St.) and N San Antonio, go north on N. San Antonio to the corner of W. 6th Street and N. San Antonio. Turn left onto W. 6th Street. The cemetery is on the Right.

STARR COUNTY BURIAL GROUNDS

Chapeno Cem

SR-C053



MAP

N26.534700 W99.149450

+26° 32' 4.92", -99° 8' 58.02"

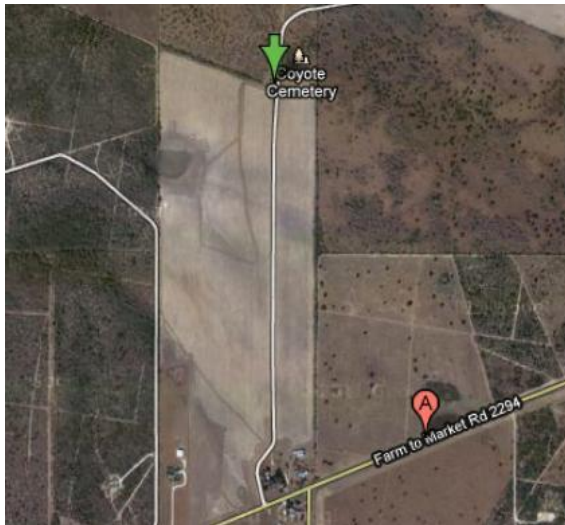
**318-322 Swordfish Dr
Roma, TX 78584**

(Falcon Heights)

Driving Directions: From the intersection of FM 2098 and Chapeno Road in Falcon Heights (North of Roma, Tx), drive southwest on Chapeno Road for 3.2 mile where Chapeno Rd turns slightly right and becomes Swordfish Drr. Keep right on Swordfish Dr. for about 150 feet and arrive at the cemetery that will be on the left.

STARR COUNTY BURIAL GROUNDS

Coyote
SR-C036



MAP

N26.6272° W98.54166°

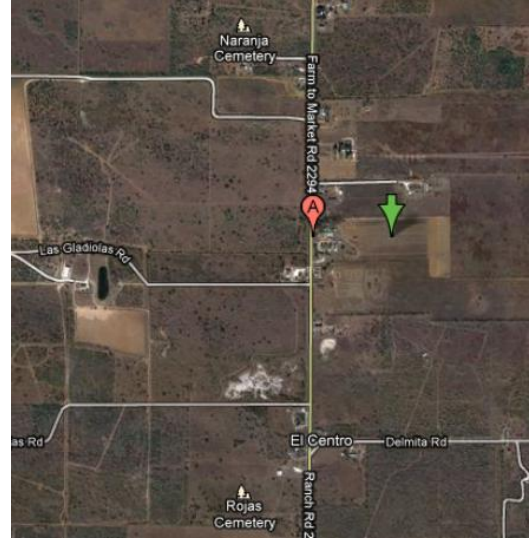
**587-623 Farm to Market Road 2294
Santa Elena, TX 78591**

(Arkansas City)

Directions to cemetery: from intersection of FM755 and FM2294 (northeast of Rio Grande City), travel northeast on FM2294 5.7 miles; turn left/north on unnamed dirt road, travel north .8 miles; cemetery on left/west endangerment factors: fenced, active, maintained.

STARR COUNTY BURIAL GROUNDS

Cruz (El Centro) SR-C100



MAP

N26.686375 W98.43097

+26° 41' 10.95", -98° 25' 51.49"

**1482-1502 Farm to Market Road 2294
Rio Grande City, TX 78582**

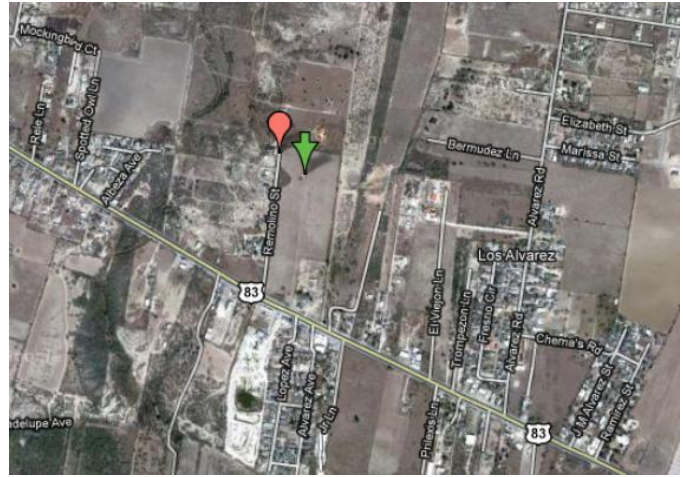
(El Centro)

Driving Directions: From Delmita Rd./FM 2294 junction in El Centro, go 0.4 mile north on FM 2294. Cemetery is located approx. 1476 ft. east of FM 2294 in cultivated field. The cemetery is not a map feature. It is new, well maintained, fully fenced, and active. When this survey was conducted, the cemetery only contained one grave. The cemetery is not directly accessible from a public road, and there are no cemetery signs posted. The single headstone inscription reads: Martin Cruz Aug. 7, 1958 Nov. 30. 1992 "Recuerdo de sus padres.

STARR COUNTY BURIAL GROUNDS

De la Garza Family Cem (Arturo)

SR-C085



MAP

N26.391664, W98.908195

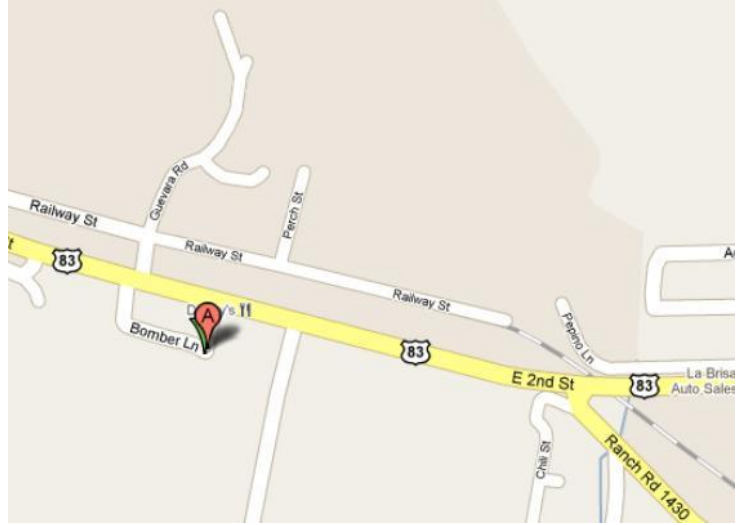
+26° 23' 29.99", -98° 54' 29.50"

35 Remolino St
Rio Grande City, TX 78582

Driving Directions: From US 83/FM 3167 junction in Rio Grande City, go 3.2 miles west on US 83. Turn right onto El Remolino Rd. and go 0.3 mile north. Cemetery is in field, approx. 407 ft. east of road. This is a well maintained, fully fenced, active cemetery. It is not a map feature, and there are no cemetery signs posted. The cemetery is located on private property and is not accessible to the public. The cemetery has a unique memorial marker dedicated to Garza Family ancestors. There is also a unique stone carving of an angel and Jesus Christ adorning one marble grave marker.

STARR COUNTY BURIAL GROUNDS

Dreamland SR-C061



MAP

N26.34471° W98.75027°

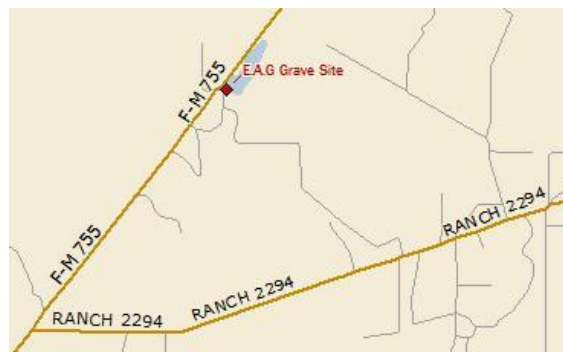
**18 Bomber Ln
Rio Grande City, TX 78582**

(La Puerta)

Directions to cemetery: from intersection of US83 and Fm1430 (east of Rio Grande City), travel west on US83 .4 miles; cemetery on left (south) endangerment factors: fenced, active, maintained.

STARR COUNTY BURIAL GROUNDS

E. A. G. Gravesite SR-C050



MAP

N26.616595, W98.608504

+26° 36' 59.74", -98° 36' 30.61"

**7800-7836 Farm to Market Road 755
Rio Grande City, TX 78582**

(Santa Catarina)

Driving Directions: Going north on FM 755, the gravesite is located approx. 2.0 miles north of FM 2294/FM 755 junction, on right (east) side of road, 55 ft. north of Aurelio Garza Rd. This grave is a map feature, and it is located adjacent to a public road. However, it is located on private property, and there are no signs posted. The grave does not appear to be maintained. It is located in a cultivated field and is threatened by routine plowing and related agricultural activities. The grave marker is a locally cast, concrete cross, which is damaged. The inscription on the cross reads: E. A. G Murio 30 Abril 1955 Nacio Nov 14, 1919 "Dedican sus Deudos" At times, due to heavy vegetation along the fence row, the marker may not be clearly visible from the FM 755.

STARR COUNTY BURIAL GROUNDS

El Sauz
SR-C068



MAP

N26.57578° W98.87301

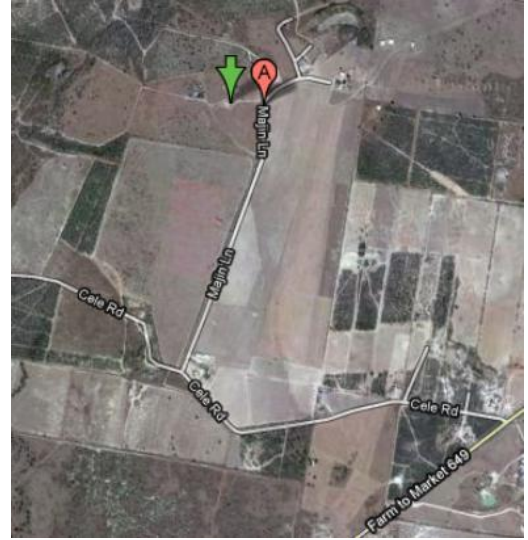
**1181-1199 Farm to Market 649
Rio Grande City, TX 78582**

(El Sauz)

Directions to cemetery: from intersection of Fm649 and FM3167 (near El Sauz), travel north on FM649 .6 miles; turn left/west on unimproved road, travel west .1 miles; cemetery to west. Endangerment factors: fenced, active, maintained.

STARR COUNTY BURIAL GROUNDS

Elizondo
SR-C038



MAP

N26.57063° W98.89198°

+26° 34' 14.27", -98° 53' 31.13"

**1-51 Majin Ln
Rio Grande City, TX 78582**

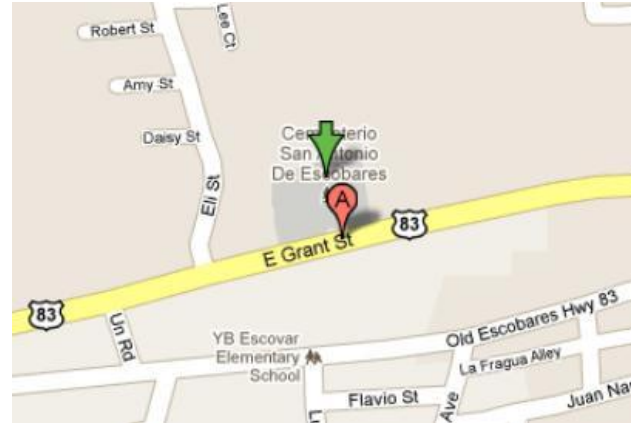
(El Sauz)

Driving Directions: From FM 3167/FM 649 junction in El Sauz, go 0.6 mile south on FM 649. Turn right at Cele Rd. and go 0.6 mile west. Turn right at Majin Rd. and go approx. 0.5 mile north. Cemetery is in pasture, approx. 339 ft. west of road. This cemetery is a map feature. It is well maintained, fully fenced, and active. It is located on private property behind a locked gate, and there are no cemetery signs posted. Cemetery features include: granite, locally cast concrete, homemade concrete and steel, and metal funeral markers. Some concrete markers have a mosaic tile veneer. There are also abundant floral decorations. One grave marker has fallen and a couple are leaning.

STARR COUNTY BURIAL GROUNDS

Escobares (San Antonio de Escobares)

SR-C042



MAP

N26.41076° W98.96824°

3211-3283 E Grant St
Roma, TX 78584

(Escobares)

Directions to cemetery: From intersection of US 83 and FM 649 (east of Roma), travel west on US 83 1.9 miles; cemetery on right/north endangerment factors: active, fenced.

STARR COUNTY BURIAL GROUNDS

Fronton (New) SR-C101



MAP

N26.409958, W99.081740

+26° 24' 35.85", -99° 4' 54.26"

**453 FM 650,
Roma, TX 78584**

(Fronton)

Directions to cemetery: From intersection of US83 and FM650 (northwest of Roma), travel west then south on FM650 4.5 miles; cemetery on the west side of road. Cemetery is across road from Old Fronton Cemetery. Endangerment factors: fenced, partly active, well maintained, evidence of frequent visitations, public access

STARR COUNTY BURIAL GROUNDS

Fronton (Old)

SR-C046



MAP

N26.41000° W99.07990°

+26° 24' 36.00", -99° 4' 47.64"

453-501 FM 650

Roma, TX 78584

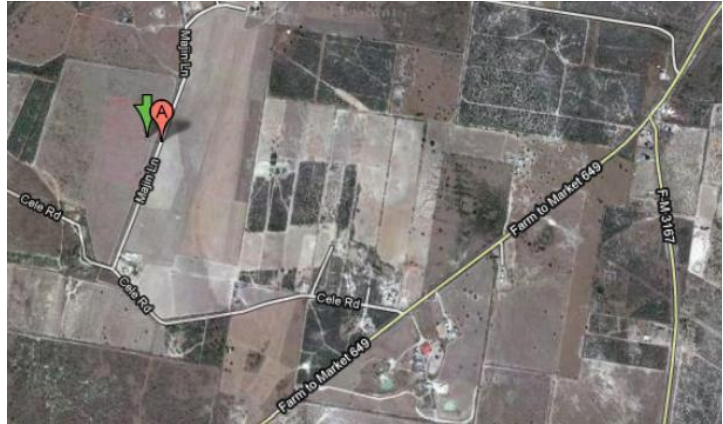
(Fronton)

Driving Directions: From intersection of US 83 and FM 650 (northwest of Roma), travel west then south approx. 4.5 miles on FM 650. Turn (East) onto private gated road across from New Fronton Cemetery and go approx. 430 ft. to cemetery. The cemetery is a map feature, and it is accessible to the public. It is fully fenced, except for a small section near the entrance. The cemetery is well maintained and active. Cemetery features include: grave slabs, curbing, formal granite markers, locally cast and homemade concrete markers, ornate wrought iron and steel markers, inscribed fieldstone markers, and hand-carved sandstone markers with unique statuary. Some older grave markers were fallen or leaning. Many graves are not oriented in the same direction.

STARR COUNTY BURIAL GROUNDS

Garcia (Celedino)

SR-C039



MAP

N26.567394, W98.892306

+26° 34' 2.62", -98° 53' 32.30"

1-51 Majin Ln

Rio Grande City, TX 78582

(El Sauz)

Driving Directions: From FM 3167/FM 649 junction in El Sauz, go 0.6 mile south on FM 649. Turn right at Cele Rd. and go 0.6 mile west. Turn right at Majin Rd. and go approx. 0.2 mile north. Cemetery is in pasture, approx. 108 ft. west of road. This cemetery is a map feature. It is well maintained, fully fenced, and active. It is located on private property behind a locked gate, and there are no cemetery signs posted. Cemetery features include: granite, locally cast concrete, homemade concrete, homemade steel, wood, and metal funeral markers. Some graves have concrete curbing or grave slabs. There are abundant floral decorations.

STARR COUNTY BURIAL GROUNDS

GARCIASVILLE

SR-C064



MAP

N26.32018° W98.69436°

**54-100 Garcia'sville Cemetery Rd
Rio Grande City, TX 78582**

(Garciasville)

Directions to cemetery: From intersection of US83 and FM2063 (north of La Grulla), travel west on US83 3.5 miles; turn left (south) on FM1430, travel .2 miles then stay left (south) on Old Church Road; travel south on Old Church Road .3 miles; cemetery on left (east)
endangerment factors: fenced, active, maintained.

STARR COUNTY BURIAL GROUNDS

GARZA
SR-C095



MAP

N26.71859° W98.46996°

+26° 43' 6.92", -98° 28' 11.86"

FM 755 (& FM 1017)
Santa Elena, TX 78591

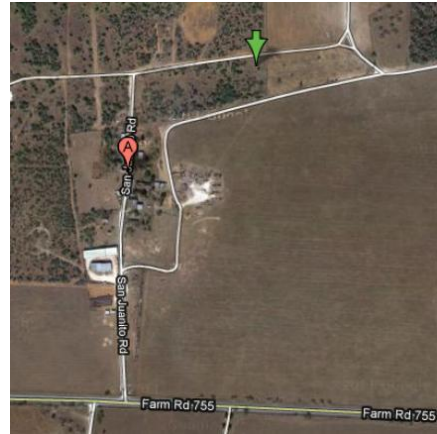
(San Isidro)

Driving Directions: From FM 1017/FM 2294 junction in San Isidro, go 2.2 miles west on FM 1017. Cemetery is on north side of road, just east of Los Laureles Rd. The cemetery is not a map feature, and there are no cemetery signs posted. It is located on a major highway and is accessible to the public. The cemetery is fully fenced, maintained, and active. Unique cemetery features include above-ground, brick burial vaults. The cemetery also has an on-site water pump for irrigation and a bench.

STARR COUNTY BURIAL GROUNDS

GARZA NIEVES SR.

SR-C080



MAP

N26.72441° W98.47405°

+26° 43' 27.88", -98° 28' 26.58"

**San Juanito Rd
Santa Elena, TX 78591**

(San Isidro)

Directions to cemetery: from intersection of FM1017 and FM755 (near La Gloria), travel east on FM1017 2.6 miles; turn left/north on San Juanito Rd, unimproved, travel north 1.1 miles (through curves east and west); road turns east, cemetery to the east.

Endangerment factors: fenced, active, maintained.

STARR COUNTY BURIAL GROUNDS

GONZALES

SR-C016



MAP

N26.66833° W98.40235°

+26° 40' 5.99", -98° 24' 8.46"

**Narciso Gonzales Rd
Rio Grande City, TX 78582**

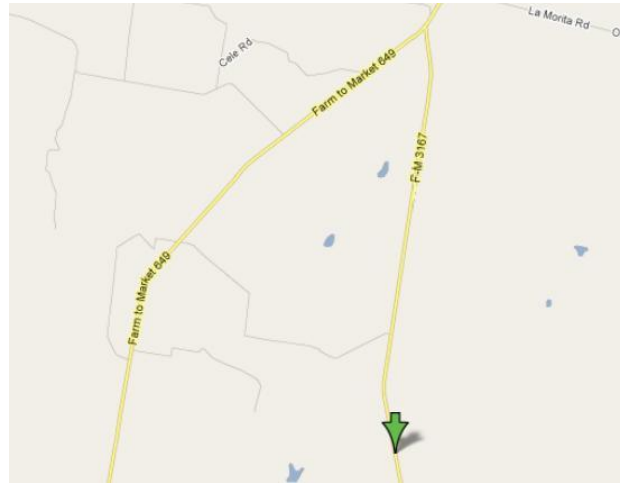
(DELMITA)

Directions to cemetery: From intersection of FM 2294 and FM 1017 (near San Isidro), travel south on FM 2294 2.2 miles; turn left/east on Delmita Road; travel east 2.4 miles; turn right/south on Narciso Gonzalez Road, travel south (following turns west, then south) 1.2 miles; turn right/west on unnamed dirt road, travel west .1 miles; cemetery is to the southwest endangerment factors: fenced, active, maintained.

STARR COUNTY BURIAL GROUNDS

Guerra, Gerado Gravesite (El Caballo)

SR-C040



MAP

N26.514560 W98.87955°

+26° 30' 52.42", -98° 52' 46.38"

**Farm to Market Road 3167
Rio Grande City, TX 78582**

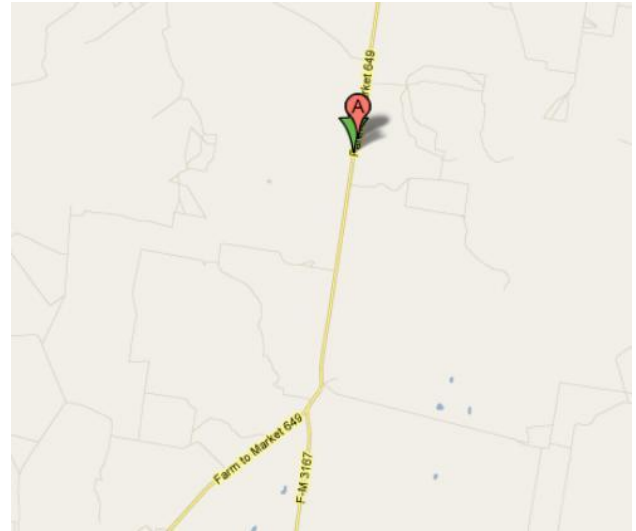
(El Sauz)

Driving Directions: From FM 3167/FM 649 junction in El Sauz, go 3.6 miles south on FM 3167. Gravesite is on right (west) side of road, approx. 50 ft. from road. From US 83 in Rio Grande City, go 10.1 miles north on FM 3167. Grave will be on left (west) side of road, approx. 50 ft. from road. This gravesite is highly endangered. It is a map feature, but it is a single grave that is not accessible to the public. There are no cemetery signs posted, and it does not appear to be regularly maintained. A new granite marker has been placed on the grave, and there is evidence of visitations (floral decorations). The grave is enclosed by an ornamental cast iron fence. The headstone inscription reads: Gerado Guerra 1877 - 4-17-47 The grave reportedly contains the man's horse as well. According to the story, the man and his horse both died while riding one day. Their bodies were not discovered for several weeks. Due to advanced decomposition, the man and his horse were buried in a single grave on the spot where they died.

STARR COUNTY BURIAL GROUNDS

Guerra, Nicasio (Family)

SR-C081



MAP

N26.62568° W98.86346°

+26° 37' 32.45", -98° 51' 48.46"

**Farm to Market 649
Rio Grande City, TX 78582**

(El Sauz)

Driving Directions: From FM 3167/FM 649 junction in El Sauz, go 3.3 miles north on FM 649. The cemetery is on the west side of the road is not a map feature. There are no cemetery signs posted, it is fully fenced, maintained, and active. It is clearly visible from a public road.

STARR COUNTY BURIAL GROUNDS

Gutierrez (La Victoria)

SR-C090



MAP

N26.344147 W98.631363

**39 Victoria Ranch Ln,
Rio Grande City, TX 78582, USA**

(La Victoria)

Driving Direction: From the intersection of FM 2360 and US Hwy 83 east of Alto Bonito, TX. turn left onto FM 2360/Ranch Rd 2360 and go 2.6 miles north. Turn right onto Victoria Ranch Ln drive to destination. The cemetery is on the right and visible from the road.

STARR COUNTY BURIAL GROUNDS

Hinojosa Cemetery



MAP

N26.7025° W98.39471°

+26° 42' 9.00", -98° 23' 40.96"

**2 Hinojosa Ln
Rio Grande City, TX 78582**

(San Isidro)

Driving Direction: From the intersection of FM 2294 and FM drive east 2.5 miles and turn north on a private non-gated road (Hinojosa Ln 2). There are no cemetery signs posted, it is fully fenced, maintained, and active. It is clearly visible from the public road.

STARR COUNTY BURIAL GROUNDS

Huisache SR-C082



MAP

N26.715921 W98.829494

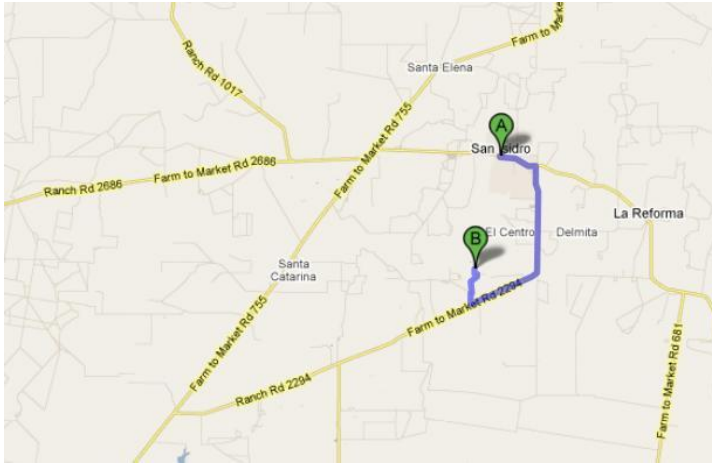
**62-162 Los Villarreal Rd
Roma, TX 78584, USA**

(Viboras)

Driving Directions: From FM 649/FM 2686 junction north of El Sauz, go 0.8 mile east on FM 2686. Turn left at Villarreal Rd. and go 1.6 miles north-northwest. Cemetery is approx. 55 ft. south-southeast of road. This cemetery is moderately endangered. It is a map feature and is accessible from a public road. There are no cemetery signs posted. The cemetery is fully fenced and appears to be maintained. However, several of the grave markers are highly eroded, damaged, or fallen. Some appear to be missing. Unique cemetery features include a concrete grave slab with inlaid sea shells and a vaulted concrete slab. Several graves are marked with the remnants of wood crosses.

STARR COUNTY BURIAL GROUNDS

Juarez Cemetery



MAP

N26.66554° W98.47033°

+26° 39' 55.94", -98° 28' 13.19"

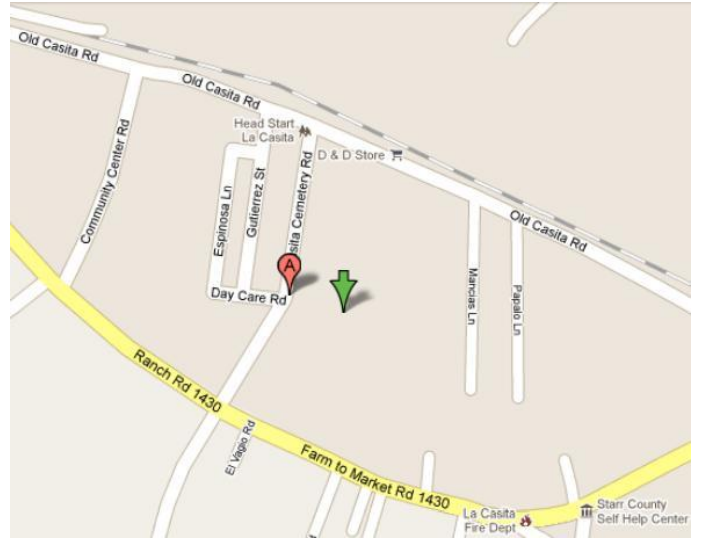
Unnamed Rd
Rio Grande City, TX 78582

(Arkansas City)

Driving Directions: From the intersection of 1017 and FM 2294, drive south on Farm to Market Rd 2294/Ranch Rd 2294. Stay on FM 2294 for 6.0 miles and turn right on Valero Rd. for (.04 miles) and take the 1st right for (157 ft) and then the 1st left. Keep right for (.07 miles) to a ranch entrance (cattle guard) and turn left on unnamed road. Counting the ranch entrance (cattle guard) where the left turn was made, drive to the 3rd ranch entrance (cattle guard) and turn right. Follow the road until the road breaks right. The cemetery can be seen straight ahead at this right break of the road.

STARR COUNTY BURIAL GROUNDS

La Casita SR-C063



MAP

N26.32598° W98.71555°

+26° 19' 33.53", -98° 42' 55.98"

**1-79 Casita Cemetery Rd
Rio Grande City, TX 78582**

(Garciasville)

Directions to cemetery: From intersection of US 83 and FM 1430 (in Garciasville), travel south then west on FM1430 for 2.1 miles; turn right (north) on Casita Cemetery Road, travel north on Casita Cemetery Road .2 miles; cemetery on right (east) endangerment factors: fenced, active, maintained.

STARR COUNTY BURIAL GROUNDS

La Gloria (Across From Post Office)

SR-C094



MAP

N26.7198° W98.52069°

+26° 43' 11.28", -98° 31' 14.48"

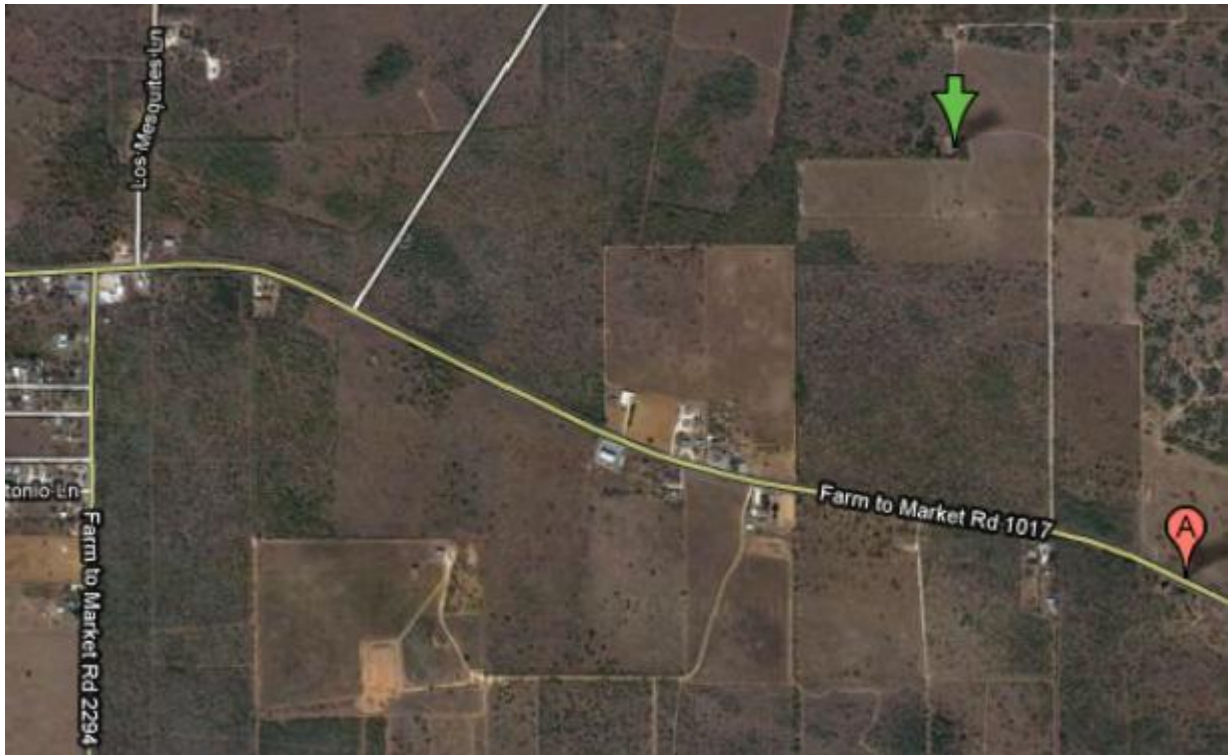
**Ranch Road 1017
Santa Elena, TX 78591**

(La Gloria)

Directions to cemetery: From intersection of FM 755 and FM 1017 travel east. Destination will be on the right 0.1 miles across from the La Gloria Post Office. Endangerment factors: fenced, active, visited and maintained.

STARR COUNTY BURIAL GROUNDS

La Paz



MAP

N26.71414° W98.41775°

+26° 42' 50.90", -98° 25' 3.90"

**Farm to Market Road 1017
Rio Grande City, TX 78582**

(San Isidro)

From the junction of 2294 and 1017, go East about 1.2 miles and turn left (N) on unimproved rural road and follow it. It will curve left (W at about .5 miles. When the road starts to turn right (N) at about 400 feet you will see the cemetery on your left.

STARR COUNTY BURIAL GROUNDS

La Reforma SR-C071



MAP

N26.69008° W98.36913°

+26° 41' 24.29", -98° 22' 8.87"

**17-41 La Reforma Rd
Rio Grande City, TX 78582**

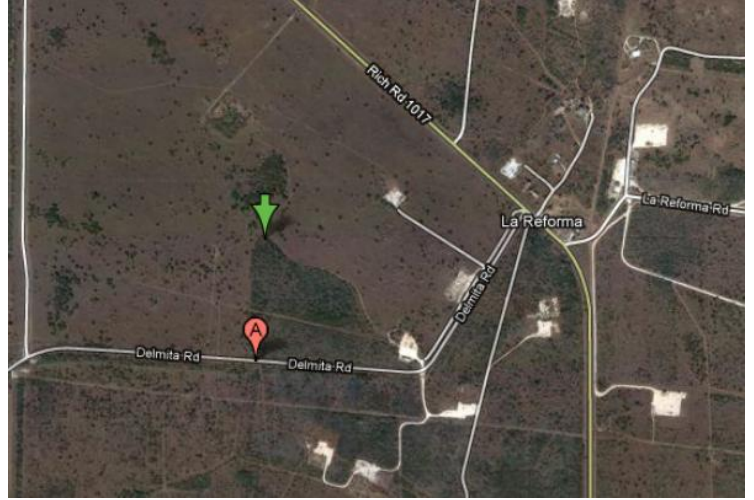
(La Reforma)

Directions to cemetery: from intersection of FM 1017 and FM 2294 (near San Isidro), travel east/southeast on FM 1017 4.3 miles; turn left/northeast on dirt road (La Reforma Road) .2 miles; keep left on unnamed dirt road, travel through red gate (locked) and travel .4 miles; cemetery on right/south endangerment factors: active, fenced, maintained.

STARR COUNTY BURIAL GROUNDS

La Reforma (Old)

SR-C020



MAP

N26.68500 W98.38305

+26° 41' 6.00", -98° 22' 58.98"

323-389 Delmita Rd
Rio Grande City, TX 78582

(La Reforma)

Directions: From FM 1017 in La Reforma, go 0.7 mile south-west on Delmita Road. At wire gate on right side of road, go north approx. 0.2 mile (1,267 ft.), following old road. Cemetery is located to right (east) of old road in wooded area. The cemetery is highly endangered. It is a map feature, but it is located in a remote area on private property. The original cemetery road has all but disappeared. There is no direct access from a public highway, and there are no cemetery signs posted. The cemetery is fully fenced, but it is not maintained and is very overgrown. Many of the grave markers are fallen, missing, or damaged, which is most likely due to grazing livestock. Cemetery features include marker plants, locally cast concrete markers, homemade wooden cross markers, concrete grave slabs, and one fenced, individual plot.

STARR COUNTY BURIAL GROUNDS

Las Escobas Ranch SR-C083



MAP

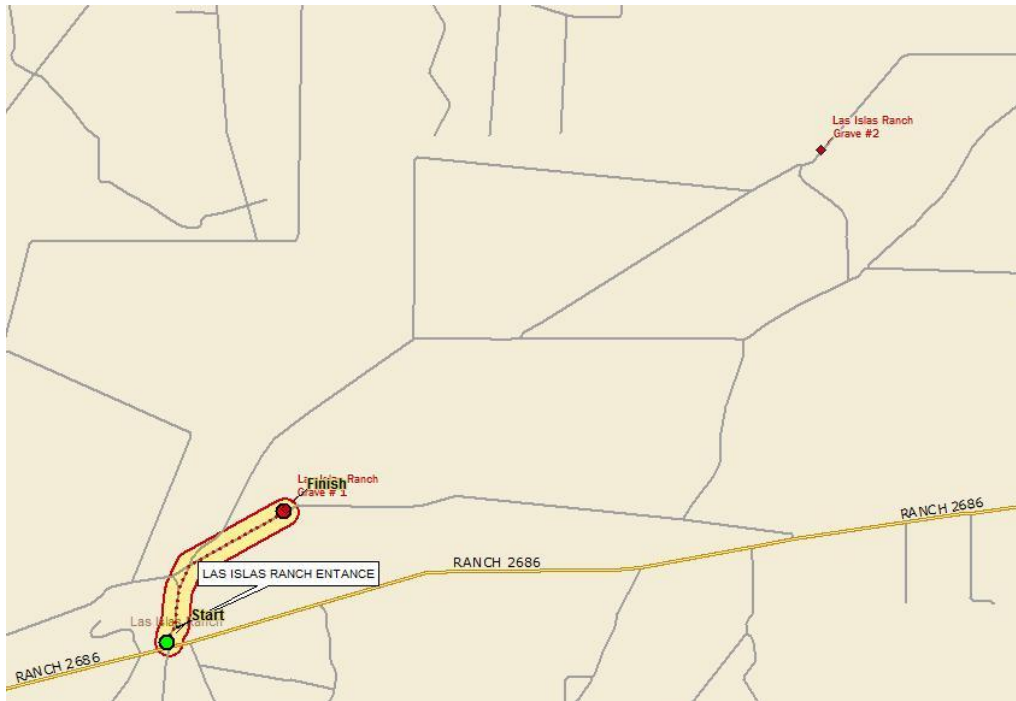
N26.668818 W98.903530

**Las Escobas Rd
Roma, TX 78584, USA**

Directions: From the intersection of La Morita Rd and FM 649 in El Sauz, go 5.1 mile north on FM 649 and turn left onto Las Escobas Rd. Drive 2.8 miles onto Salinas Ranch Rd for .3 mi. Continue onto Las Escobas Rd again and the destination will be on the right at about 300 feet.

STARR COUNTY BURIAL GROUNDS

Las Islas Ranch Grave # 1



MAP

N26.70373° W98.70669°

**Farm to Market Road 2686
Rio Grande City, TX 78582**

(Las Islas Ranch)

Driving Directions: From FM 755/FM 1017 W junction in La Gloria, go 2.3 miles west on FM 1017 to FM 2686/FM 1017 junction. Stay left and go 9.3 miles west on FM 2686. Turn right at Las Islas Ranch entrance and go 0.5 miles and keep right onto unnamed ranch road. Destination will be on the right at about 0.7 miles.

STARR COUNTY BURIAL GROUNDS

Las Islas Ranch Grave # 2 SR-C103



MAP

N26.72982° W98.66399°

Unnamed Rd
Rio Grande City, TX 78582

(La Gloria)

Driving Directions: From FM 755/FM 1017 W junction in La Gloria, go 2.3 miles west on FM 1017 to FM 2686/FM 1017 junction. Stay left and go 9.3 miles west on FM 2686. Turn right at Las Islas Ranch entrance and go 0.3 mile north to fork behind ranch complex. At fork stay right and go 4.0 miles to windmill and water tank. Fenced grave is located just north of windmill and water tank. This single gravesite is highly endangered. It is not a map feature and is located in a very remote area on private property. There are no cemetery signs, and the grave is not accessible to the public. The grave is fully enclosed with a woven wire fence. However, it is not maintained and is very overgrown. The single grave marker consists of an ornate hand-wrought steel cross, which has fallen. The inscription is no longer legible.

STARR COUNTY BURIAL GROUNDS

**Longoria
SR-C065**



MAP

N26.72982° W98.66399°

**300-398 Kennedy St
La Grulla, TX 78548**

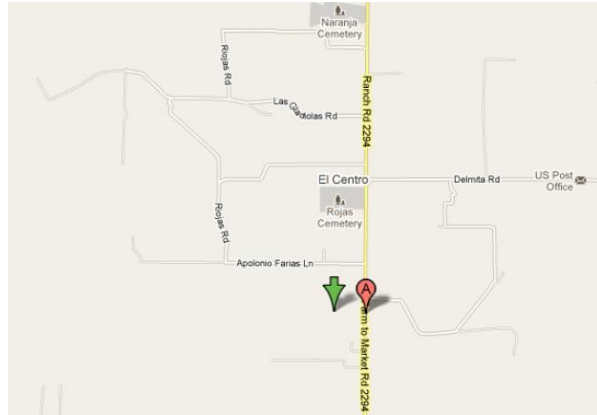
(La Grulla)

Directions to cemetery: from intersection of US 83 and FM 2063 (north of La Grulla), travel south on FM 2063 for 2.9 miles; turn right (west) on 3rd Street, travel west on 3rd Street 1.5 miles; turn right (northwest) on Mission Road, travel northwest on Mission Road .4 miles; cemetery on left (west) endangerment factors: fenced, active, maintained.

STARR COUNTY BURIAL GROUNDS

Lopez (Arkansas City)

SR-C013



MAP

N26.67051° W98.43637°

+26° 40' 13.84", -98° 26' 10.93"

**Farm to Market Road 2294
Rio Grande City, TX 78582**

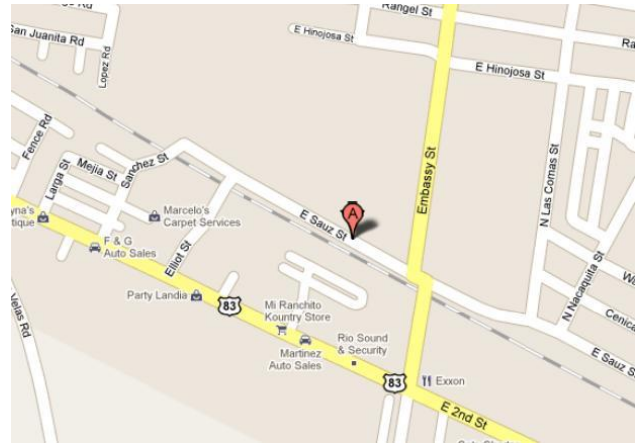
(Arkansas City)

Driving directions: From FM 1017/FM 2294 junction in San Isidro, go 2.8 miles south on FM 2294. Turn right at unnamed, gated road and go approx. 0.2 mile west to cemetery. This is a well maintained, fully fenced, active cemetery. It is a map feature. It is located on private property, and there are no cemetery signs posted. Cemetery features include: formal and homemade concrete markers and abundant floral decorations.

STARR COUNTY BURIAL GROUNDS

Lopez (Rio Grande City)

SR-C075



MAP

N26.358708 W98.775973

+26° 21' 31.35", -98° 46' 33.50"

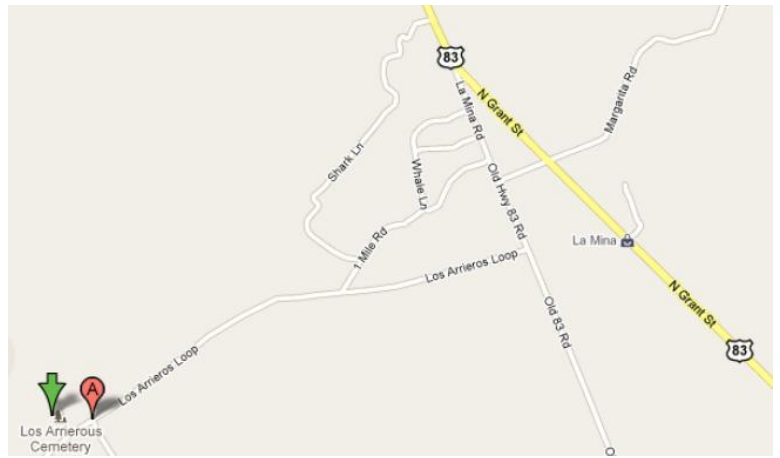
**13-99 E Sauz St
Rio Grande City, TX 78582**

(Rio Grande City)

Driving Directions: From US 83 in Rio Grande City, go 0.1 mile north on Reynaldo Gomez Dr. Turn left at E. El Sauz St. and go 0.1 mile west. Cemetery is on hill, approx. 80 ft. north (right side) of road. The cemetery is fully fenced, maintained, and active. It is accessible to the public. It is not a map feature, and no cemetery signs are posted. The cemetery is threatened by significant erosion. The area surround the cemetery has been quarried extensively. The cemetery now sits on a small hill with very steep banks. The banks appear to be actively receding. Several grave markers are displaced, fallen, missing. Some markers show repairs, and some have been replaced.

STARR COUNTY BURIAL GROUNDS

Los Arrierous SR-C058



MAP

N26.50194° W99.0961°

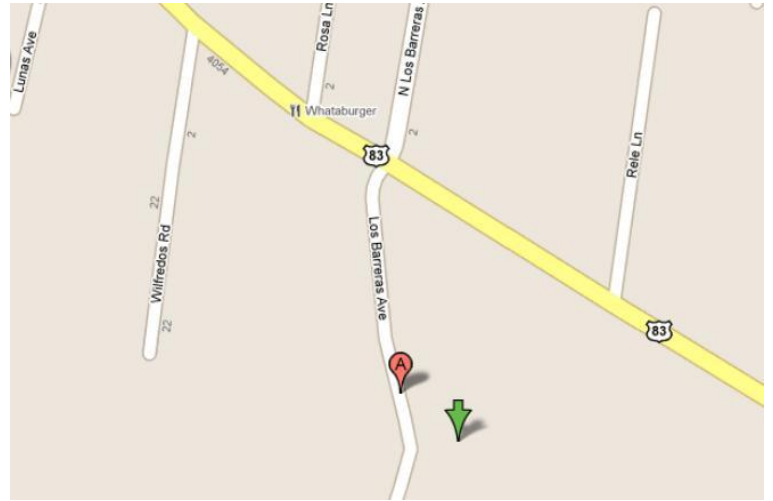
+26° 30' 6.98", -99° 5' 45.96"

**94 Los Arrieros Loop
Roma, TX 78584**

Driving Directions: From the intersection of US 83 and Bravo Blvd in Roma,Tx, drive north 9.3 miles on US Hwy 83. Turn left onto 83-Short Cut for .1 miles. . Turn left onto La Mina Rd for .2 miles. Take the 1st right onto Los Arrieros Loop for 1.0 miles. Take the 1st left to stay on Los Arrieros Loop. Destination will be on the right.

STARR COUNTY BURIAL GROUNDS

Los Barreras SR-C043



MAP

N26.39100° W98.91860°

+26° 23' 27.60", -98° 55' 6.96"

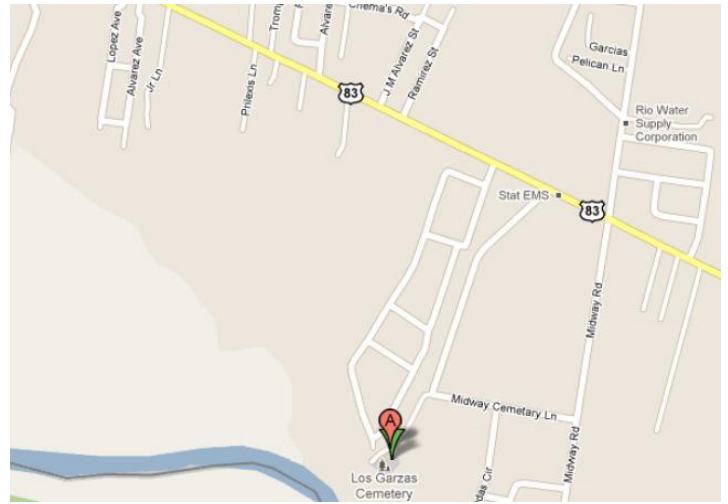
**Los Barreras Avenue
Rio Grande City, Texas**

(Roma)

Directions to cemetery: From the intersection of US 83 and FM 649 (east of Roma), travel east on US 83 1.6 miles; turn right/south on Las Barreras Road, travel .2 miles; cemetery on left/east endangerment factors: fenced, active, maintained.

STARR COUNTY BURIAL GROUNDS

Los Garzas SR-C045



MAP

N26.37222° W98.89892°

+26° 22' 19.99", -98° 53' 56.11"

Midway Cemetery Lane

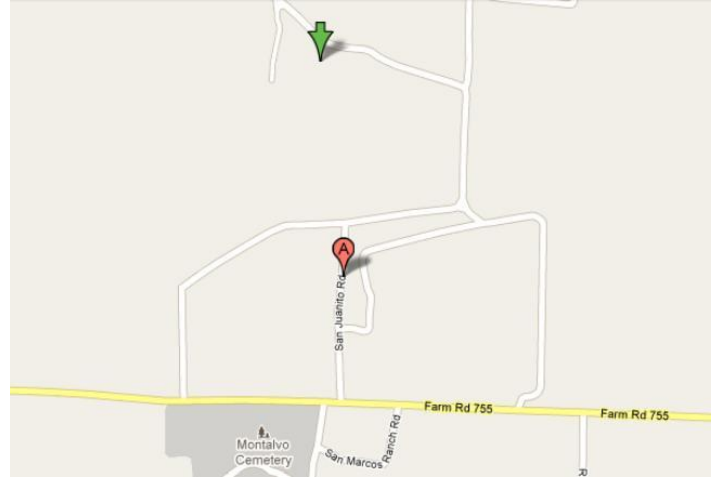
Rio Grande City, Texaa

(Rio Grande City)

Directions to cemetery: From the intersection of US 83 and FM 3167 (west of Rio Grande City), travel west on US 83 2.0 miles; turn left (south) on Midway Road, travel south .4 miles; turn right (west) on Midway Cemetery Road (unimproved), travel west .5 miles then south .1 miles; cemetery on right (west) endangerment factors: active, maintained.

STARR COUNTY BURIAL GROUNDS

Los Laureles SR-C005



MAP

N26.72956° W98.47742°

+26° 43' 46.42", -98° 28' 38.71"

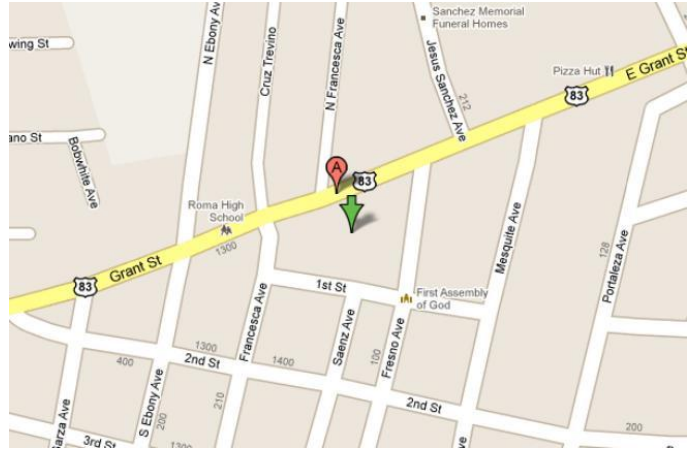
**Los Laureles Rd
Santa Elena, TX 78591**

(San Isidro)

Directions to cemetery: From the intersection of FM 1017 and FM 755 (near La Gloria), travel east on FM 1017 2.6 miles; turn left/north on Los Laureles Rd, unimproved road, travel north 2.4 miles (through curves east and west); road turns west, cemetery to the south. Endangerment factors: fenced, active, maintained.

STARR COUNTY BURIAL GROUNDS

**Los Saenz
SR-C041**



MAP

N26.40196° W98.99494°

+26° 24' 7.06", -98° 59' 41.78"

U.S. 83

Roma, TX 78584

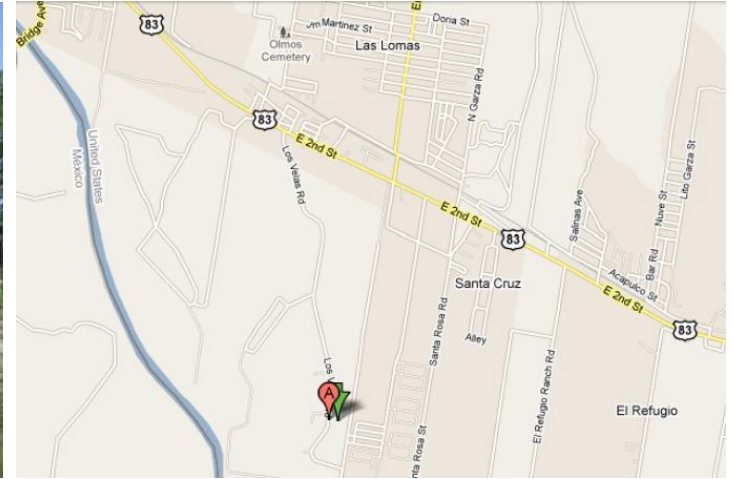
(Roma)

**Directions to cemetery: From the intersection of US 83 and FM 649 (east of Roma), travel west on US 83 3.6 miles; cemetery on left/south end
endangerment factors: fenced, active, maintained.**

STARR COUNTY BURIAL GROUNDS

Los Velas

SR-C060



MAP

N26.34007° W98.77909°

+26° 20' 24.25", -98° 46' 44.72"

**82-86 Los Velas Rd
Rio Grande City, TX 78582**

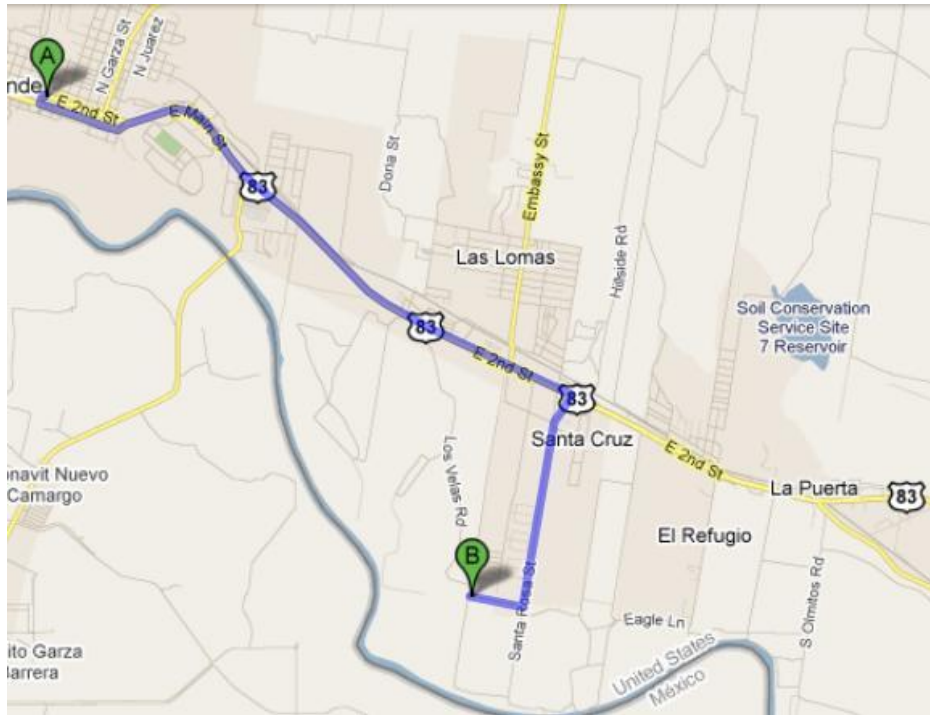
(Rio Grande City)

Directions to cemetery: From the intersection of US 83 and FM 755 (in Rio Grande City), travel east on US 83 1.8 miles; turn right (south) onto Los Velas Road, travel south on Los Velas Road 1.5 miles; turn left (east) onto farm road, cemetery is 50 feet east.

Endangerment factors: fenced, active, maintained.

STARR COUNTY BURIAL GROUNDS

Los Velas Soldier's SR-C074



MAP

N26.33587° W98.77874°

+26° 20' 9.13", -98° 46' 43.46"

**74 Los Velas Rd
Rio Grande City, TX 78582**

(Rio Grande City)

Directions to cemetery: From the intersection of US 83 and FM 755 (in Rio Grande City), travel east on US 83 3 miles. Turn right onto Santa Rosa Rd for 1.3 miles. Turn right on unnamed road for .3 miles to your destination. The cemetery is moderately endangered. It is not a map feature, and there are no cemetery signs posted. However, the cemetery is fully fenced and maintained. The cemetery appears to be regularly visited, and there are abundant floral decorations. There are four marked graves. Only one grave, the soldier's grave, has a dated marker. The three remaining graves have locally cast, concrete markers with no inscriptions. There had been 12-15 marked graves at one time, but most were destroyed when the refinery was constructed.

STARR COUNTY BURIAL GROUNDS

Montalvo SR-C007



MAP

N26.71833° W98.47776°

+26° 43' 5.99", -98° 28' 39.94"

**31-39 San Marcos Ranch Rd
Santa Elena, TX 78591**

(San Isidro)

Directions to cemetery: from intersection of FM 1017 and FM 755 (near La Gloria), travel east on FM 1017 2.7 miles; cemetery on right/south endangerment factors: fenced, active, maintained.

STARR COUNTY BURIAL GROUNDS

Montalvo, Francisco Jr. (Gravesite)

SR-C026



MAP

N26.56404° W98.65462°

+26° 33' 50.54", -98° 39' 16.63"

**Farm to Market Road 755
Rio Grande City, TX 78582**

(Santa Catarina)

Driving Directions: Going north on FM 755, gravesite is approx. 3.1 miles north of FM 490/FM 755 junction and approx. 27 ft. west (on left shoulder) of road. Going south on FM 755, gravesite is 2.4 miles south of FM 2294/FM 755 junction on right (west) side of road. The gravesite is low to moderately endangered. It is a map feature, and it is located adjacent to a public road. However, it is on private property, and there are no cemetery signs posted. The grave is not fenced, but it appears to be maintained. Grazing livestock pose a threat to the single grave marker. The marker inscription reads: Francisco Montalvo Jr. Nacio Enero 4, 1889 Fallecio Enero 21, 1939.

STARR COUNTY BURIAL GROUNDS

Naranja
SR-C011



MAP

N26.69165° W98.43749°

+26° 41' 29.94", -98° 26' 14.96"

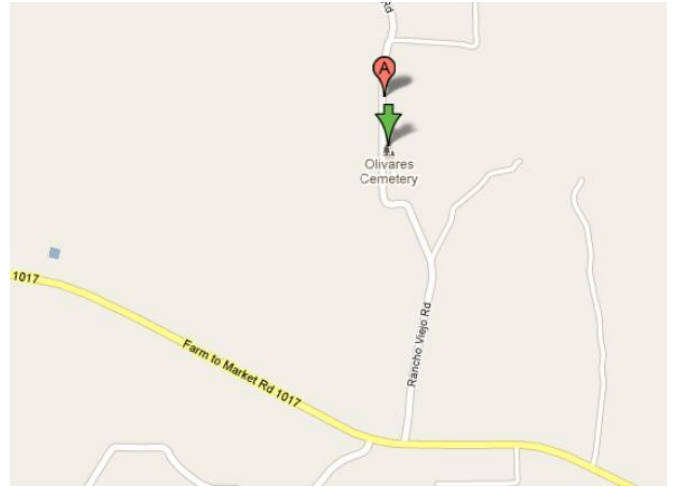
1537 Farm to Market Road 2294
Rio Grande City, TX 78582

El Centro)

Directions to cemetery: From the intersection of FM 1017 and FM 2294 (near San Isidro), travel south on FM 2294 1.5 miles; turn right/west onto unimproved, unnamed road, travel west .2 miles; cemetery to the west endangerment factors: fenced, active, maintained.

STARR COUNTY BURIAL GROUNDS

Olivares SR-C022



MAP

N26.71164° W98.40362°

+26° 42' 41.90", -98° 24' 13.03"

**Rancho Viejo Rd
San Isidro, TX 78588**

(La Reforma)

**Directions to cemetery: From the intersection of FM 1017 and FM 2294 (near San Isidro), travel east/southeast on FM 1017 for 2.2 miles; turn left/north on unimproved Rancho Viejo Road and travel north (through curves west) .7 miles; cemetery on right/east
endangerment factors: fenced, active, maintained.**

STARR COUNTY BURIAL GROUNDS

Olmos SR-C059



MAP

N26.36609° W98.78279°

+26° 21' 57.92", -98° 46' 58.04"

**827-845 N Blanca Rd
Rio Grande City, TX 78582**

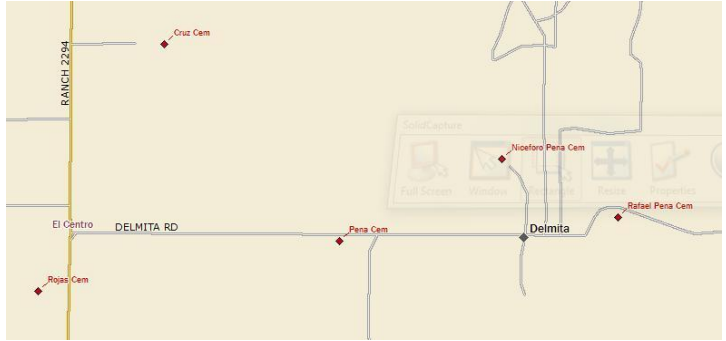
(Rio Grande City)

Directions to cemetery: From the intersection of US 83 and FM 755 (in Rio Grande City), travel east on US 83 1.8 miles; turn left (north) on N Blanca Road, travel north 1.2 miles; cemetery on left (west) endangerment factors: active, maintained, fenced.

STARR COUNTY BURIAL GROUNDS

Pena (Delmita)

SR-C017



MAP

N26.68025° W98.42128°

+26° 40' 48.90", -98° 25' 16.61"

**64-88 Delmita Rd
Rio Grande City, TX 78582**

(Delmita)

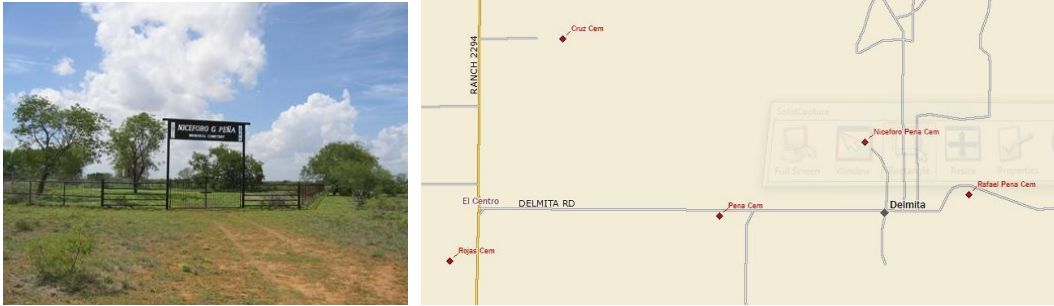
Directions to cemetery: From the intersection of 2294 and Delmita Rd in El Centro, drive east Delmita Rd for 0.7 miles. Cemetery is on the right at 64-88 Delmita Rd.

Endangerment factors: active, maintained, fenced.

STARR COUNTY BURIAL GROUNDS

Pena (Niceforo G. Pena Memoria)

SR-C018



MAP

N26.68322° W98.41354°

+26° 40' 59.59", -98° 24' 48.74"

**133-137 Delmita Rd
Rio Grande City, TX 78582**

(Delmita)

Directions to cemetery: From the intersection of 2294 and Delmita Rd in El Centro, drive east Delmita Rd for 1.2 miles. Turn left on local rural road. Cemetery is at the end of the road on the left. Endangerment factors: active, maintained, fenced.

STARR COUNTY BURIAL GROUNDS

Pena (Rafael) SR-C019



MAP

N26.68073° W98.40840°

+26° 40' 50.63", -98° 24' 30.24"

**145-237 Delmita Rd
Rio Grande City, TX 78582**

(Delmita)

Directions to cemetery: From the intersection of 2294 and Delmita Rd in El Centro, drive east Delmita Rd for 1.6 miles. Turn left on gated private local rural road. Cemetery is on the left of the road and can be seen from the gated entrance gate. Endangerment factors: active, maintained, fenced.

STARR COUNTY BURIAL GROUNDS

Pena (San Isidro)

SR-C107



MAP

N26.717744 W98.443023

Old San Isidro Rd.
Santa Elena, TX 78591

(San Isidro)

Driving Directions: From FM 1017/FM 2294 junction in San Isidro, go 0.7 mile west on FM 1017. Turn right at Old San Isidro Rd. and go 0.3 mile north to a church. Turn left at private road just north of Old San Isidro Church and go 0.1 mile west. The cemetery is a map feature. It is located on private property behind a locked gate and is not accessible to the public. There are no cemetery signs posted. The cemetery is fully fenced and active. Only the newer sections of the cemetery appear to be maintained. Many of the older cemetery features are damaged, fallen, leaning, or highly eroded. Some are obscured by heavy vegetation. An above-ground, masonry vault, which is possibly the oldest feature in the cemetery, is highly eroded and in need of preservation. Remnants of a similar vault are located adjacent to still-standing, eroded vault. A common feature in this cemetery is the fenced burial plot, both individual and family. The majority of the fences are ornate, cast iron. Some are ornamental woven wire. Some cast iron fence sections appear to be missing. The cemetery also contains a grave house/grave shrine. The small, gabled, wood-frame building shelters one grave. The building contains abundant floral decorations.

STARR COUNTY BURIAL GROUNDS

Queen of Peace Memorial Park

SR-C084



MAP

N26.40123° W99.00770°

+26° 24' 4.43", -99° 0' 27.72"

300-398 Grant St

Roma, TX 78584

(Roma)

Driving Directions: From intersection of US 83 and FM 649 (east of Roma), travel west on US 83 4.4 miles; cemetery on left/south. Cemetery is adjacent to and directly behind Roma City Cemetery. The cemetery entrance is through the Roma City Cemetery. This is a well maintained, relatively new, perpetual care cemetery. It is adjacent to USGS map feature (Roma City Cemetery) and is partly fenced. It is very active and growing.

STARR COUNTY BURIAL GROUNDS

Rancho Viejo

SR-C025



MAP

N26.7261° W98.43196°

+26° 43' 33.96", -98° 25' 55.06"

**Los Mesquites Ln
San Isidro, TX 78588**

(San Isidro)

Directions to cemetery: from intersection of FM1017 and FM2294 (near San Isidro), travel north on Los Mesquites Road 1.0 miles (staying right/east) at split; road curves NE and cemetery is to the north endangerment factors: fenced, active.

STARR COUNTY BURIAL GROUNDS

Requenez(Across from Fire Station)

SR-C099



MAP

**N26.70962° W98.42442°
+26° 42' 34.63", -98° 25' 27.91"**

**Farm to Market Road 1017
Rio Grande City, TX 78582**

(San Isidro)

Driving Directions: From FM 1017/FM 2294 junction in San Isidro, go 0.7 mile east on FM 1017. Cemetery is approx. 165 ft. north of road, across from San Isidro Fire Department/Starr Co. Precinct #4. This is a relatively new, well maintained, very active cemetery. It is not a map feature, and there are no cemetery signs posted. It is fully fenced and accessible from a public road.

STARR COUNTY BURIAL GROUNDS

Rio Grande City County Cemetery

SR-C001



MAP

N26.38985° W98.82971°

**749 El Sauz Road
Rio Grande City, Texas**

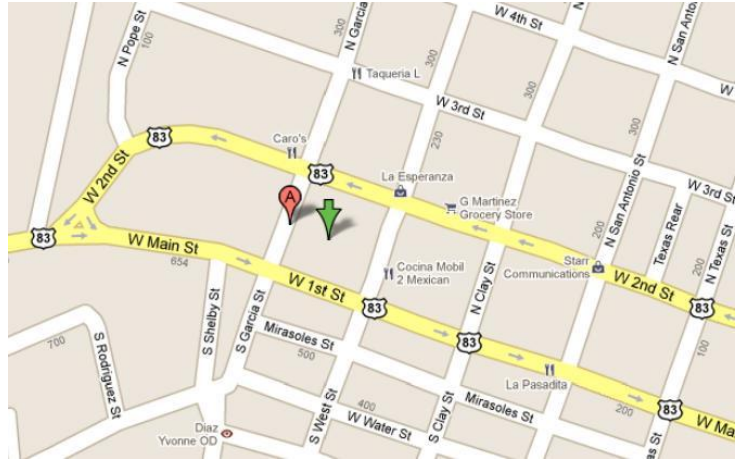
(Rio Grande City)

**Directions to cemetery: at intersection of Eisenhower and Fairground Roads (in northwest Rio Grande City), travel south on Fairground .3 miles; cemetery on right (west) end
endangerment factors: active, maintained, partially fenced.**

STARR COUNTY BURIAL GROUNDS

Rio Grande City Downtown Historic Cemetery

SR-C002



MAP

N26.38074° W98.82475°

+26° 22' 50.66", -98° 49' 29.10"

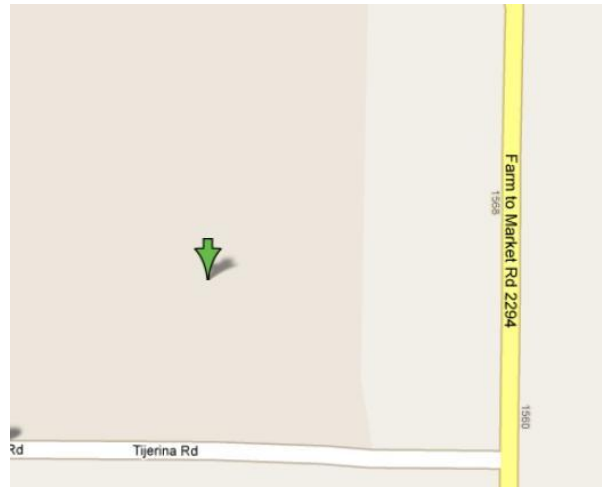
**101-199 N Garcia St
Rio Grande City, TX 78582**

(Rio Grande City)

Directions to cemetery: From the intersection of Flores St. (FM 755) and 2nd Street (in Rio Grande City), travel west on W.2nd St. for .6 miles; cemetery on left (south) endangerment factors: fenced, maintained, active.

STARR COUNTY BURIAL GROUNDS

Rodriguez
SR-C106



MAP

N26.697275 W98.436183

+26° 41' 50.19", -98° 26' 10.26"

Tijerina Rd
Rio Grande City, TX 78582

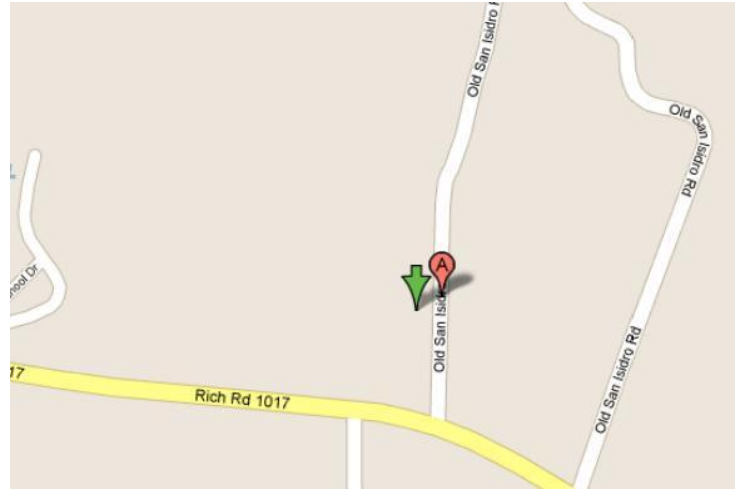
(El Centro)

Driving Directions: From FM 1017/FM 2294 junction in San Isidro, go 1.1 mile south on FM 2294. Turn right (west) onto private road that runs between pink house and fence row, across from Ranchito Grocery and Meat Market (note: there is also an unnamed road just after fence row, do not turn here). Follow road 0.1 mile west-north. Cemetery is in field to the left, approx. 437 ft. west of road. This is a small, well maintained, fully fenced, active cemetery. It is not a map feature, and there are no cemetery signs posted.

STARR COUNTY BURIAL GROUNDS

Rodriguez (Delia Memorial)

SR-C077



MAP

N26.71706° W98.44640°

+26° 43' 1.42", -98° 26' 47.04"

Old San Isidro Rd
Santa Elena, TX 78591

(San Isidro)

Directions to cemetery: From the intersection of FM 1017 and FM 2294 (near San Isidro), travel west on FM 2294 .8 miles; turn right/north onto unimproved, Old San Isidro Road, travel north 30 feet; turn left/west into private road, travel west then north .2 miles; cemetery to north. Endangerment factors: fenced, active, maintained

STARR COUNTY BURIAL GROUNDS

Rojas **SR-C012**



MAP

N26.67809° W98.43511°

+26° 40' 41.12", -98° 26' 6.40"

**1409-1445 Farm to Market Road 2294
Rio Grande City, TX 78582**

(El Centro)

Driving Directions: From Delmita Rd./FM 2294 junction in El Centro, go 0.1 mile south on FM 2294. Turn right at private, gated road, which is just north of house at 1435 FM 2294, and go approx. 380 ft. west to cemetery. The cemetery is a map feature. It is fully fenced, well maintained, and active. The cemetery is accessible to the public. However, there are no cemetery signs posted. The cemetery has a gate and entry arch with cemetery name. Cemetery features include: a flag pole, homemade wooden crosses, unique statuary, metal funeral makers, and formal granite markers.

STARR COUNTY BURIAL GROUNDS

Roma City

SR-C048



MAP

N26.40198° W99.00776°

+26° 24' 7.13", -99° 0' 27.94"

**254-298 Grant St
Roma, TX 78584**

(Roma)

Directions to cemetery: from intersection of US 83 and FM 649 (east of Roma), travel west on US 83 4.4 miles; cemetery on left/south. Endangerment factors: active, fenced, maintained.

STARR COUNTY BURIAL GROUNDS

Saenz (La Gloria)

SR-C098



MAP

N26.720577 W98.523805

**Ranch Road 1017
Rio Grande City, TX 78582**

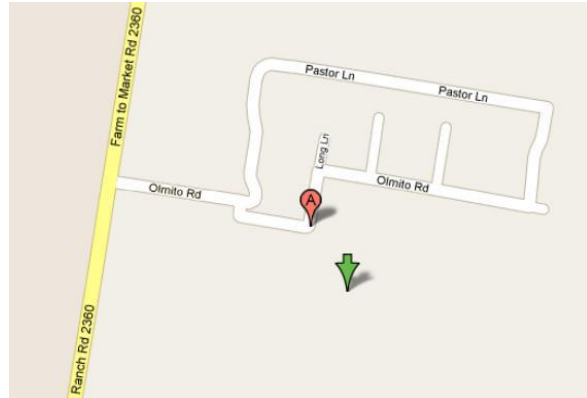
(La Gloria)

Directions to cemetery: From intersection of FM 755 and FM 1017 (@ La Gloria), west on FM 1017 on gravel ranch road 0.1 miles; cemetery on left (south) Endangerment factors: active, maintained, fenced.

STARR COUNTY BURIAL GROUNDS

Saenz (La Victoria)

SR-C089



MAP

N26.34585° W98.62870°

+26° 20' 45.06", -98° 37' 43.32"

**64-124 Olmito Rd
Rio Grande City, TX 78582**

(La Victoria)

Driving Directions: From US 83 in Alto Bonito, go approx. 2.6 miles north on FM 2360. Turn right onto Olmito Rd. and go 0.2 mile east. Where road bends sharply to left, turn right at cemetery sign and follow private road approx. 0.1 mile south and east. The road dead ends at cemetery. This cemetery is not a map feature and it is not fenced. It is maintained, very active, and frequently visited. A cemetery sign is posted at entrance on Olmito Road.

STARR COUNTY BURIAL GROUNDS

Saenz (Santa Catarina)

SR-C051



MAP

N26.60896° W98.55803°

+26° 36' 32.26", -98° 33' 28.91"

Farm to Market Road 2294
Santa Elena, TX 78591

(Santa Catarina)

Driving Directions: From FM 755, go 4.5 miles east on FM 2295. Cemetery is approx. 350 ft. south (right) of road and approx. 254 ft. southwest of oil well. This cemetery is highly endangered. It is a map feature, but there are no cemetery signs posted, and it is located on private property in a remote area. It is not accessible to the public. The cemetery is very overgrown and neglected, and it is not fenced. Grazing cattle have damaged or displaced many of the cemetery features. Cemetery features include fieldstone and homemade concrete markers, fieldstone curbing, locally cast concrete makers, and remnants of wood markers. Three graves are enclosed by a dilapidated woven wire fence. One of these graves is also surrounded by ornate, concrete columns that are approx. 1 to a 1-1/2 ft. tall. A concrete angel statue also adorned this grave, but the statue has fallen and is badly eroded.

STARR COUNTY BURIAL GROUNDS

Saenz Pedro A Memorial (La Gloria)

SR-C030



MAP

N26.71996° W98.51898°

+26° 43' 11.86", -98° 31' 8.33"

Ranch Road 1017
Santa Elena, TX 78591

(San Isidro)

Directions to cemetery: From the intersection of FM 1017 and FM 755 (near La Gloria), travel east on FM 1017 for 0.2 miles. The cemetery is on the left. Endangerment factors: fenced, active, maintained.

STARR COUNTY BURIAL GROUNDS

Salineno Cem

SR-C057



MAP

N26.5181° W99.10939°

+26° 31' 5.16", -99° 6' 33.80"

**Salineno Rd
Roma, TX 78584**

(Salineno)

Driving Directions: From the intersection of US 83 and Bravo Blvd in Roma, Tx, drive north 10.8 miles on US Hwy 83. Turn left onto Salineno Rd. Destination will be on the left at 1.4 miles. Endangerment factors: fenced, active, maintained.

STARR COUNTY BURIAL GROUNDS

San Blas **SR-C092**



MAP

N26.64450° W98.63428°

+26° 38' 40.20", -98° 38' 3.41"

**401-499 Rancho San Blas Rd
Rio Grande City, TX 78582**

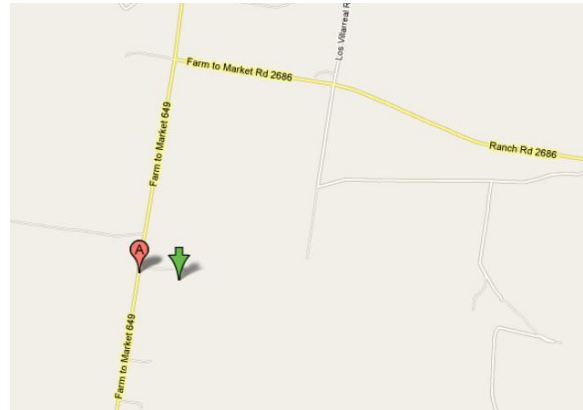
(Santa Catarina)

Driving Directions: From FM 2294/FM 755 junction, go 4.0 miles north on FM 755. Turn left at San Blas Ranch Rd. and go 2.8 miles west. Cemetery is located approx. 208 ft. south of road. This is a small private cemetery that is not accessible to the public. It is not a map feature, and there are no cemetery signs posted. It is fully fenced, maintained, and active. When this survey was conducted, the cemetery only contained one burial: Eugenio A. Saenz Feb. 22, 1914 Dec. 4, 1981 A plot was also set aside for his wife: Guadalupe A. Saenz Aug. 11, 1930 -----, --, ----

STARR COUNTY BURIAL GROUNDS

San Carlos

SR-C069



MAP

N26.67854° W98.85051°

+26° 40' 42.74", -98° 51' 1.84"

**1770-1800 Farm to Market 649
Roma, TX 78584**

(San Carlos)

Directions to cemetery: from intersection of FM649 and FM2686 (near San Carlos), travel south on FM649 1.0 miles; turn left/east onto unimproved road, travel east then south .2 miles; cemetery is to the south endangerment factors: active, fenced, maintained.

STARR COUNTY BURIAL GROUNDS

San Isidro Cem



MAP

N26.72088° W98.44701°

+26° 43' 15.17", -98° 26' 49.24"

**Old San Isidro Rd
Santa Elena, TX 78591**

(San Isidro)

Driving Directions: From FM 1017/FM 2294 junction in San Isidro, go 0.7 mile west on FM 1017. Turn right at Old San Isidro Rd. and go 0.4 mile north. Turn left onto private, unnamed road and go approx. 150 ft west. Cemetery is on north side of road. This is a well maintained, active cemetery.

STARR COUNTY BURIAL GROUNDS

San Jose
SR-C033



MAP

N26.67128° W98.52644°

+26° 40' 16.61", -98° 31' 35.18"

219 Saenz Ln
Rio Grande City, TX 78582

(Santa Anna)

Driving Directions: From FM 2294/FM 755 junction, go 6.4 miles north on FM 755. Turn right at Saenz Ln., and go 2.1 miles east-northeast, through two gates, to first fork. At fork go left approx. 0.3 mile. At second fork turn right, cross cattle guard, and go 0.1 mile. At third fork stay right and go 0.2 mile. At fourth fork, stay left and go 0.1 mile north. Cemetery is on west (left) side of road. The cemetery is a map feature. It is fully fenced, well maintained, and active. The cemetery is located in a remote area, on a private ranch. No cemetery signs are posted. In order to access the cemetery, one must go through locked gate.

STARR COUNTY BURIAL GROUNDS

San Vicente **SR-C067**



MAP

N26.27054° W98.64444°

+26° 16' 13.94", -98° 38' 39.98"

**100-198 S Cortez St
La Grulla, TX 78548**

(La Grulla)

Directions to cemetery: At the intersection of US 83 and FM 2360 (north of La Grulla), travel south on Fm 2360 2.8 miles; turn left (east) on 4th Street, travel .2 miles; turn left (north) on unnamed road; cemetery 20 feet north endangerment factors: fenced, active, maintained.

STARR COUNTY BURIAL GROUNDS

Santa Anna SR-C032



MAP

N26.66744° W98.56112°

+26° 40' 2.78", -98° 33' 40.03"

Saenz Ln
Rio Grande City, TX 78582

(Santa Anna)

Driving Directions: From FM 2294/FM 755 junction, go 6.4 miles north on FM 755. Turn right at Saenz Ln., and go 0.2 mile east. Turn left on unnamed road and go 0.1 mile north. Road dead ends at cemetery. This is a well maintained, fully fenced, active cemetery. It is a map feature, but there are no cemetery signs posted. Cemetery is accessible to the public. Cemetery features include: formal, locally cast, and metal funeral markers. Several markers also have ceramic photographs. Two graves near the cemetery entrance are oriented south-north. The rest of the graves are oriented west-east. Many of the graves have settled substantially causing markers to lean.

STARR COUNTY BURIAL GROUNDS

Santa Catarina

SR-C034



MAP

N26.65436° W98.57444°

+26° 39' 15.70", -98° 34' 27.98"

**Farm to Market Road 755
Rio Grande City, TX 78582**

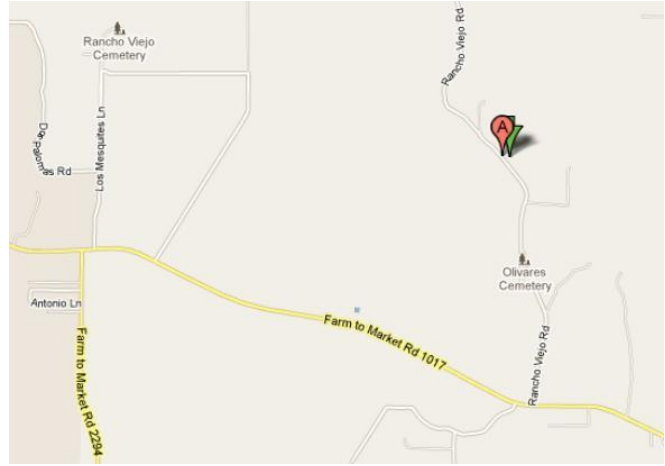
(Santa Catarina)

Driving Directions: 25.1 miles north of Rio Grande City on 755. Cemetery is approx. 284 ft. east of FM 755 in Santa Catarina. This is a well maintained, fully fenced, active cemetery. It is a map feature, but there are no cemetery signs posted. Cemetery is located on private property behind locked gate.

STARR COUNTY BURIAL GROUNDS

Santa Cruz

SR-C023



MAP

N26.71775° W98.40473°

+26° 43' 3.90", -98° 24' 17.03"

**Rancho Viejo Rd
San Isidro, TX 78588**

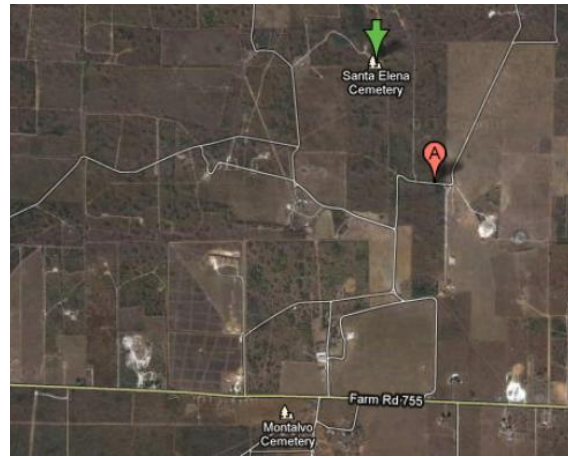
(San Isidro)

**Directions to cemetery: From the intersection of FM 1017 and FM 2294 (near San Isidro), travel east/southeast on FM 1017 for 2.2 miles; turn left/north on unimproved, Rancho Viejo Road, travel north then west 1.2 miles; cemetery on right/north end
factors: fenced, active, maintained.**

STARR COUNTY BURIAL GROUNDS

Santa Elena

SR-C004



MAP

N26.73887° W98.47341°

**Unnamed Rd
Santa Elena, TX 78591**

+26° 44' 19.93", -98° 28' 24.28"

(San Isidro)

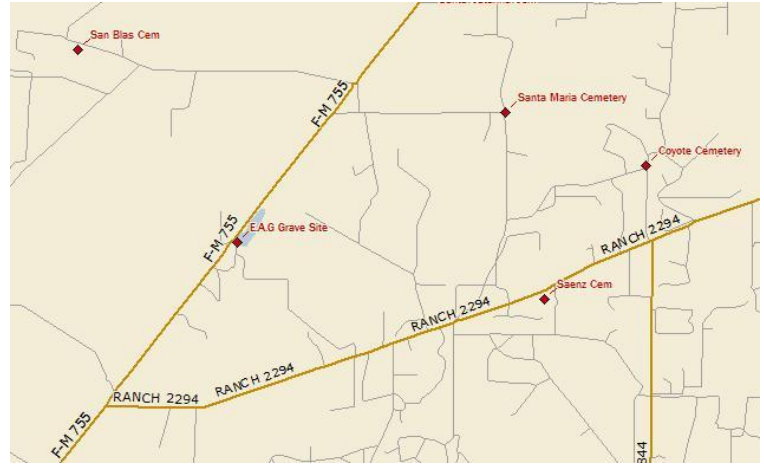
Directions to cemetery: From the intersection of FM 1017 and FM 755 (near La Gloria), travel east on FM 1017 2.6 miles; turn left/north on Los Laureles Road, travel north 3.2 miles (through curves east and west); road turns east, cemetery to the east.

Endangerment factors: fenced, active, maintained.

STARR COUNTY BURIAL GROUNDS

Santa Maria

SR-C035



MAP

N26.63498° W98.56449°

+26° 38' 5.93", -98° 33' 52.16"

74-130 Santa Catarina Rd
Santa Elena, TX 78591

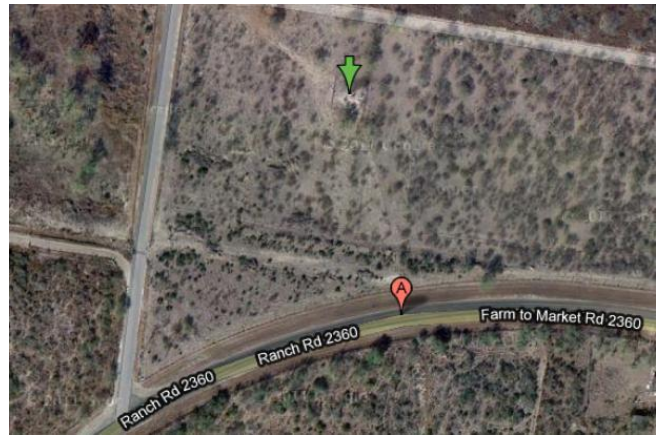
(Santa Catarina)

Driving Directions: From FM 2294/FM 755 junction, go 3.7 miles north on FM 755. Turn right at Librado Garza Rd. and go 1.7 miles east (will go through three locked gates). Cemetery is located on east side of road where road turns north. The cemetery is well maintained, active, and fully fenced. It is a map feature. It is not accessible to the public, and in order to visit the cemetery, one must go through three locked gates and travel approx. 1.7 miles on a private ranch.

STARR COUNTY BURIAL GROUNDS

Santa Rosa Ranch

SR-C088



MAP

26.383864,-98.624682

+26° 23' 1.91", -98° 37' 28.86"

2501-2557 Farm to Market Road 2360

Rio Grande City, TX 78582

(Camp Garcia)

Driving Directions: From US 83 in Alto Bonito, go approx. 5.1 miles north on FM 2360. Where road bends sharply to right, turn left onto Elias and Fela Solis Rd. and go approx. 0.1 mile north. Cemetery is approx. 280 ft. east (right) of road. This is a well maintained, fully fenced, active family cemetery. It is not a map feature and is located on private property. No cemetery signs are posted.

STARR COUNTY BURIAL GROUNDS

Soledad SR-C021



MAP

N26.70036° W98.40147°

+26° 42' 1.30", -98° 24' 5.29"

**Rancho Viejo Rd
Rio Grande City, TX 78582**

(La Reforma)

Directions to cemetery: From the intersection of FM 1017 and FM 2294 (near San Isidro), travel east/southeast on FM 1017 2.1 miles; turn right/south onto unimproved/unnamed road, travel south .1 miles; cemetery is 300 yards southeast endangerment factors: fenced, active, maintained.

STARR COUNTY BURIAL GROUNDS

Solis, Ruben (La Grulla Tx)

SR-C086



MAP

N26.27171° W98.65585°

+26° 16' 18.16", -98° 39' 21.06"

18 West Pvt Lazaro Solis Street
La Grulla, Texas

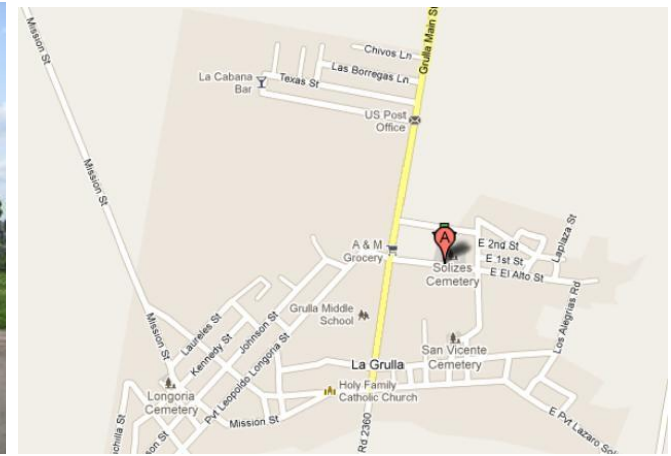
(La Grulla)

Driving Directions: From US 83 in Alto Bonito, go 2.6 miles south on FM 2360 to La Grulla. Turn right onto W. PVT Lazaro Solis St. and go 0.5 miles northwest. Cemetery is located at intersection of W. PVT Lazaro Solis St. and Mission St. on north side of road. This is a well maintained, fully fenced, very active cemetery. It is not a map feature, and no cemetery signs are posted. It is accessible to the public.

STARR COUNTY BURIAL GROUNDS

Solizes (La Grulla Tx)

SR-C066



MAP

N26.2733° W98.64473°

+26° 16' 23.88", -98° 38' 41.03"

245-299 E El Alto St

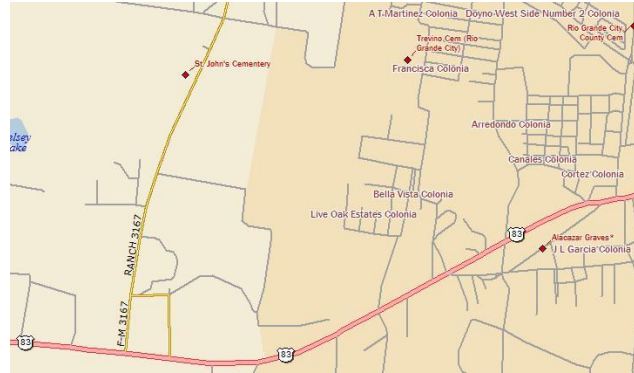
La Grulla, TX 78548

(La Grulla)

Directions to cemetery: From the intersection of US 83 and FM 2360 (north of La Grulla), travel south on FM 2360 2.6 miles; turn left (east) on Alto Street, travel .2 miles; cemetery on left (north) endangerment factors: fenced, active, maintained.

STARR COUNTY BURIAL GROUNDS

St. John **SR-C076**



MAP

N26.38810° W98.85600°

+26° 23' 17.16" , -98° 51' 21.60"

**142 Farm to Market Road 3167
Rio Grande City, TX 78582**

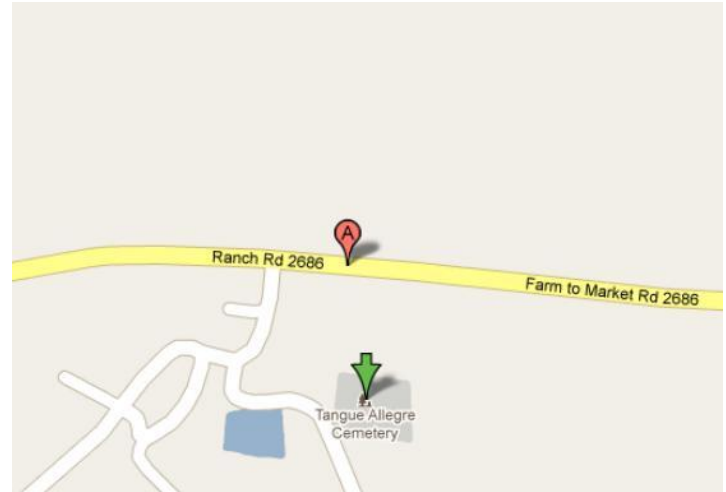
(Rio Grande City)

This is a well maintained, very active cemetery. It is not a map feature, and it is not fenced. It is located on a major public road and is accessible to the public. The cemetery is located adjacent to St. John United Methodist Church, and a sign is posted on the cemetery entry arch.

STARR COUNTY BURIAL GROUNDS

Tanque Allegre

SR-C031



MAP

N26.712631 W98.581897

+26° 42' 45.47", -98° 34' 54.83"

Farm to Market Road 2686 & Alamo Heights Blvd.
Rio Grande City, TX 78582

(La Gloria)

Driving Directions: From FM 755/FM 1017 W junction in La Gloria, go approx. 2.3 miles west on FM 1017 to FM 2686/FM 1017 junction. Stay left and go 1.0 mile west on FM 2686. Cemetery is approx. 573 ft. (0.1 mile) south of FM 2686 on west side of an abandoned road. There is a street sign posted at intersection of old road and FM 2686. The street sign reads Alamo Heights Blvd. The cemetery is highly endangered. It is a map feature, but it is located on private property and is not directly accessible from a public road. There are no cemetery signs posted. The cemetery was fenced at one time, but the fence has fallen. Only a few fence posts remain. The cemetery is not maintained and is very overgrown. Only one grave marker was observed during this survey. It is a homemade concrete cross with embedded sea shells. No inscriptions were evident on the cross, which has fallen. There are also several marker plants. Livestock graze freely within.

STARR COUNTY BURIAL GROUNDS

Taurino Laurel Memorial

SR-C097



MAP

N26.672483 W98.531518

+26° 40' 20.94", -98° 31' 53.46"

219 Saenz Ln
Rio Grande City, TX 78582

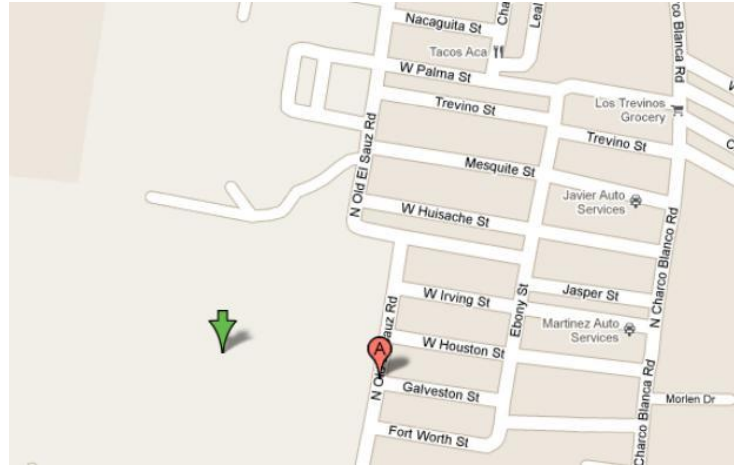
(Santa Anna)

Driving Directions: From FM 2294/FM 755 junction, go 6.4 miles north on FM 755. Turn right at Saenz Ln., and go 2.1 miles east-northeast, through two gates, to first fork. At fork go left approx. 0.3 mile. At second fork turn right, cross cattle guard, and go 0.1 mile. At third fork stay right and go 0.2 mile. At fourth fork, stay left and go 0.3 mile north-west-south. Go through gate on right (west) side of road and follow pipeline approx. 0.15 mile (806 ft.) northwest (will go through two unlocked gates). Turn left at dim road and go 0.08 mile (423 ft.) west to cemetery. The cemetery is not a map feature, and there are no cemetery signs posted. The cemetery is located in a very remote area, on private property. It is fully fenced, maintained, and active. When this survey was conducted, there were two marked graves and a plot reserved for the wife of Taurino Laurel. Cemetery features include a flag pole, bronze veteran's marker, an ornamental steel fence that encloses a child's grave, a double concrete marker with glass covered "nichos", and an entry arch with cemetery name.

STARR COUNTY BURIAL GROUNDS

Trevino (Rio Grande City)

SR-C073



MAP

N26.388136 W98.845306

+26° 23' 17.29", -98° 50' 43.10"

409-415 N Old El Sauz Rd
Rio Grande City, TX 78582

(Rio Grande City)

Driving Directions: From US 83 in Rio Grande City, go 0.7 mile north on Charco Blanco Rd. Turn left at W. Houston St. and go 0.2 mile west. Turn left at Old El Sauz St., and then turn immediately right onto unpaved, unnamed road between two large brick houses (this road is directly across from Galveston St./Old El Sauz intersection.). Follow this road approx. 0.1 mile west to cemetery. The cemetery is moderately endangered. It is not a map feature, and it is not accessible from a public road. There are no cemetery signs posted. The cemetery is not fenced, but it is maintained. There are two marked graves and possibly some unmarked. The cemetery appears to be regularly visited. The cemetery is primarily threatened by residential development. When this survey was conducted, houses were being constructed in the vicinity of the cemetery, and a new school had been constructed nearby.

STARR COUNTY BURIAL GROUNDS

Trevino (Santa Catarina)

SR-C093



MAP

N26.655438 W98.5426282

+26° 39' 19.58", -98° 32' 33.46"

**182-252 Santa Caterina Rd
Rio Grande City, TX 78582**

(Santa Catarina)

Driving Directions: From FM 2294/FM 755 junction, go 5.0 miles north on FM 755. Turn right at Medanitos Rd. and go 2.5 miles east-north-east. Cemetery is approx. 240 ft. south of road in cultivated field. The cemetery is not map feature, and there are no cemetery signs posted. It is located in a remote area, on a ranch. The cemetery is fully fenced, maintained, and active, and it appears to regularly visited. When this survey was conducted, the cemetery contained two graves. The double headstone reads: Pedro Trevino Sept. 11, 1911 Jan. 30, 1995 Jesusita B. Aug. 1, 1912 Mar. 4, 2003

STARR COUNTY BURIAL GROUNDS

Una de Gato

SR-C056



MAP

N26.701442 W98.929236

+26° 42' 5.19", -98° 55' 45.25"

**Las Escobas Rd
Roma, TX 78584**

(Las Escobas Ranch)

Depart El Sauz (N) for 5.6 miles. Turn left on Las Escobas Road. Go 2.84 miles and keep right on unnamed road. Drive 3.23 miles and keep left on unnamed road for .73 miles. Cemetery is on the left and is fenced and well maintained.

STARR COUNTY BURIAL GROUNDS

Villarreal
SR-C105



MAP

N26.72071° W98.44706°

+26° 43' 14.56", -98° 26' 49.42"

**Old San Isidro Rd
Santa Elena, TX 78591**

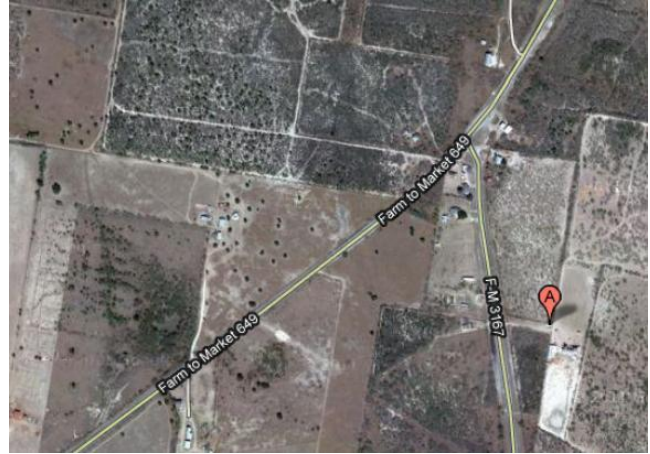
(San Isidro)

Driving Directions: From FM 1017/FM 2294 junction in San Isidro, go 0.7 mile west on FM 1017. Turn right at Old San Isidro Rd. and go 0.5 mile north. Turn left onto private, unnamed road and go approx. 0.2 mile west-northwest to fork. At fork go left, through locked gate, approx. 0.1 mile west. Cemetery is on south side of road. This is a well maintained, fully fenced, active cemetery. It is not a map feature and is located on private property. There are no cemetery signs posted.

STARR COUNTY BURIAL GROUNDS

Villarreal, Natividad

SR-C079



MAP

N26.564991 W98.873941

F-M 3167

Rio Grande City, TX 78582

(El Sauz)

Driving Directions: From FM 649/FM 3167 junction south of El Sauz, go 0.2 miles and left left onto private unimproved road. Cemetery can be seen from FM 3167. When this survey was conducted, the cemetery was relatively new. It is not a map feature, and there are no cemetery signs posted. It is fully fenced, maintained, and active. It is accessible to the public and is frequently visited.

STARR COUNTY BURIAL GROUNDS

Unknown (Arroyo de los Mudo) (La Minita)

SR-C047



MAP

N26.479563 W99.071518

2401 N Grant St
Roma, TX 78584

Driving Directions: From the intersection of US 83 and Bravo Blvd in Roma, Tx, drive north 7.6 miles on US Hwy 83. Turn left (SSW) onto unnamed rural unimproved road. Destination will be on the left at 1.2 miles.

STARR COUNTY BURIAL GROUNDS

Unknown Name

SR-C102



MAP

N26.549237 W98.901310

**906-968 Farm to Market 649
Rio Grande City, TX 78582**

(El Sauz)

Driving Directions: From US 83 in Garceno, go 10.4 miles north on FM 649. Fenced gravesite is approx. 93 ft. east of FM 649 in field. The cemetery is not a map feature. It is located on private property, behind a locked gate. However, it is clearly visible from FM 649. The grave is fully fenced, maintained, and frequently visited. There are no cemetery signs posted.

STARR COUNTY BURIAL GROUNDS

Unknown Name
SR-C049



MAP

N26.752138 W98.494034

+26° 45' 7.70", -98° 29' 38.52"

Farm to Market Road 755
Santa Elena, TX 78591

Directions to cemetery: From the intersection of FM7 55 and FM 1017 (in La Gloria), travel northwest on FM 755 3.6 miles; cemetery on left (north west) endangerment factors: fenced, active, maintained.

STARR COUNTY BURIAL GROUNDS

Unknown Name

SR-C027



MAP

N26.74632° W98.53809°

+26° 44' 46.75", -98° 32' 17.12"

Rio Grande City, TX 78582

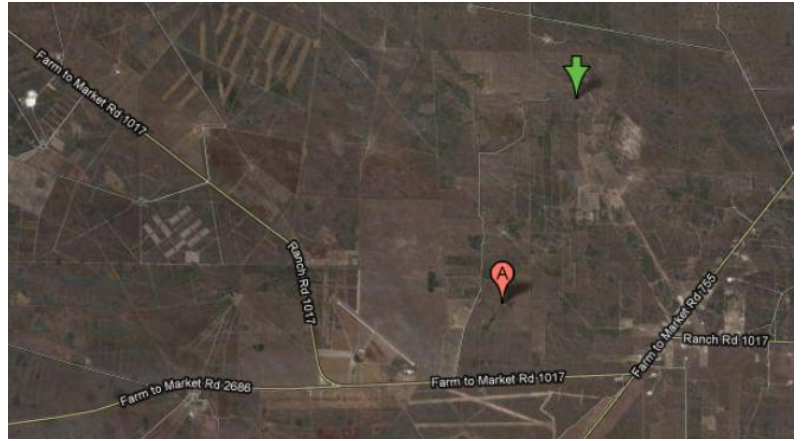
(La Gloria)

Driving Directions: From FM 755 in La Gloria, go 1.4 miles west on FM 1017 W. Turn right at Joseph Lopez Rd. and go 1.8 miles north. Turn right at entrance to Sal Colorada Ranch and go 0.5 mile to locked gate/cattle guard at Ranch house. Continue through locked gate and turn immediately right, following dim road though second gate, and across field for approx. 954 ft. (0.18 mile). Cemetery is on south side of dim road. This cemetery is moderately endangered. It is a map feature, but it is located in a remote area on private property. It is fully fenced, and selected sections are regularly maintained. There are no cemetery signs posted. Cemetery features include: ceramic photographs, grave slabs, formal granite and marble markers, locally cast and homemade concrete markers, metal funeral markers, and wooden markers. One burial plot that contains two graves is enclosed by an ornamental cast iron fence. Some older grave markers are fallen, leaning, or missing. An decorative arch with the name "Saenz" has been erected over three graves near the cemetery entrance. These graves are well maintained and visited frequently.

STARR COUNTY BURIAL GROUNDS

Unknown Name

SR-C028



MAP

N26.74821° W98.53362°

+26° 44' 53.56", -98° 32' 1.03"

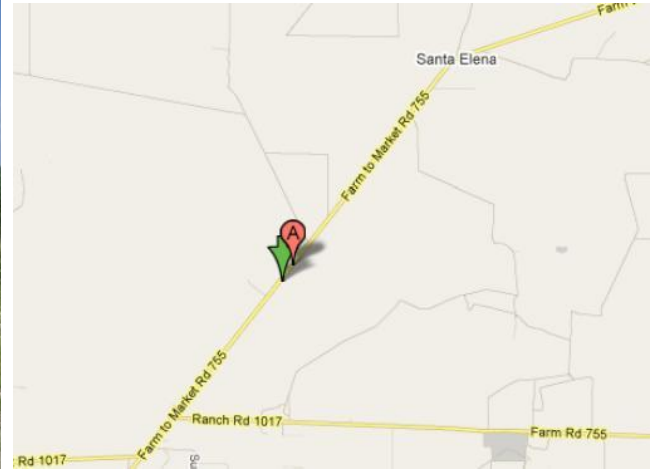
Rio Grande City, TX 78582

La Gloria)

Driving Directions: From FM 755 in La Gloria, go 1.4 miles west on FM 1017 W. Turn right at Joseph Lopez Rd. and go 1.8 miles north. Turn right at entrance to Sal Colorado Ranch and go 0.5 mile to Ranch house. Continue through locked gate and follow road, behind house, for approx. 0.5 mile north and then east. Cemetery is on north side of road. The cemetery is highly endangered. It is a map feature, but it is located in a very remote area on private property. It is fully fenced, but not maintained. There are no cemetery signs posted. Cemetery features include: ceramic photographs, unique statuary, grave slabs, formal granite and marble markers, locally cast and homemade concrete markers, ornate hand-wrought steel markers, metal funeral markers, and wooden markers. Some older grave markers are fallen or leaning. Many of the grave plots, including individual and family, are enclosed with chain link, ornamental cast iron, or woven wire fences.

STARR COUNTY BURIAL GROUNDS

Unknown Name
SR-C029



MAP

N26.73511 W98.50829°

+26° 44' 6.40", -98° 30' 29.84"

Farm to Market Road 755
Santa Elena, TX 78591

La Gloria

Directions to cemetery: at intersection of FM755 and FM1017 (in La Gloria), travel northwest on FM755 1/3 miles; cemetery on right (southeast) Endangerment factors: active, fenced, maintained.

STARR COUNTY BURIAL GROUNDS

Unknown Name

SR-C044



MAP

N26.373691 W98.895308

+26° 22' 25.29", -98° 53' 43.11"

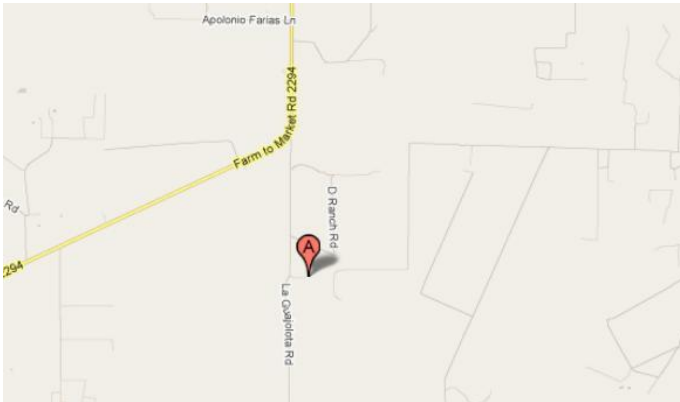
**SE Pulvedas Cir
Rio Grande City, TX 78582**

(Rio Grande City)

Directions to cemetery: from intersection of US83 and FM3167 (west of Rio Grande City), travel west on US83 2.0 miles; turn left (south) on Midway Road, travel south .4 miles; turn right (west) on Midway Cemetery Road (unimproved), travel .3 miles; cemetery on left (south) endangerment factors: fenced, active.

STARR COUNTY BURIAL GROUNDS

Unknown Name
SR-C015



MAP

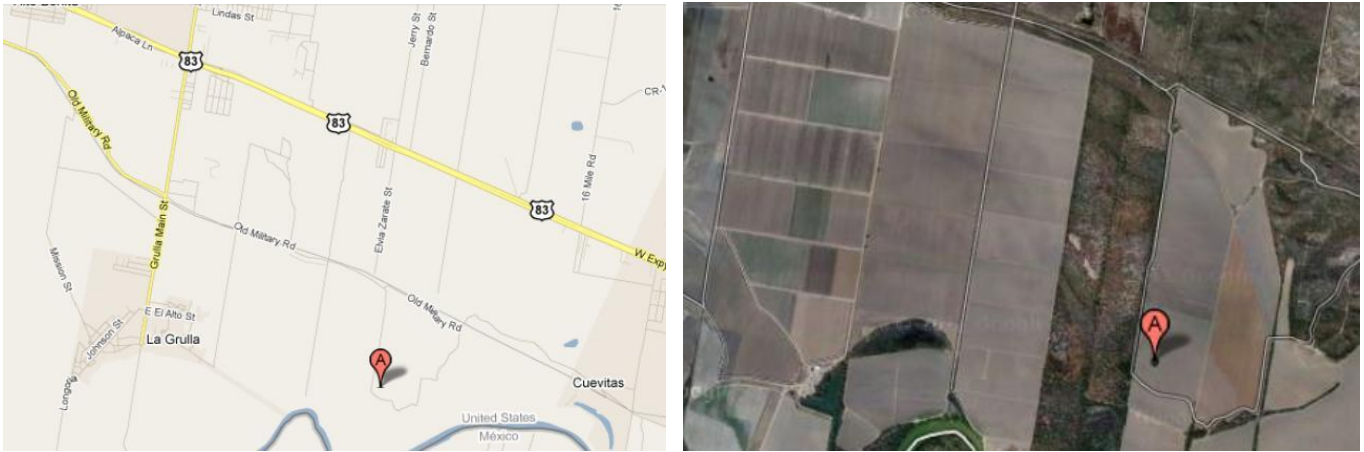
N26.643038 W98.431764

La Guajolota Rd
Rio Grande City, TX 78582

Directions to cemetery: From intersection of US 2294 and La Guajolota Rd (South of El Centro, Tx), travel south on La Guajolota Rd 1.34 miles; turn left (east) at unnamed rural road. Destination at 0.15 miles.

STARR COUNTY BURIAL GROUNDS

Unknown Name
SR-C070



MAP

N26.263082 W98.611701

**Old Military Rd
Rio Grande City, TX 78582**

Directions to cemetery: From intersection of US 83 and Ranch Road 2360 in Alto Bonito, Tx, travel east on Hwy 83 1.62 miles; turn right (ESE) at unnamed rural road for 1.24 miles. Destination at 0.15 miles. Continue (SSE) for 1.56 miles to destination on the left in an open field.

STARR COUNTY BURIAL GROUNDS

Unknown 1.3 Miles east of 755

SR-C006



MAP

N26.72098 W98.49934

+26° 43' 15.53", -98° 29' 57.62"

**Ranch Road 1017
Santa Elena, TX 78591**

(La Gloria)

Driving Directions: From FM 755/FM 1017 junction in La Gloria, go 1.3 miles east on FM 1017. Turn left at private, unnamed road (the road has gate, but no lock) and go 0.1 mile north. Road dead ends at cemetery. The cemetery is a map feature, but no cemetery signs are posted. The cemetery is maintained, fully fenced, and active, and it is accessible to the public. Cemetery features include: formal and homemade grave markers, concrete curbing, gravel covering, ceramic photos, and concrete grave slabs. Some older concrete markers have been replaced with new granite markers. The cemetery appears to be frequently visited.

STARR COUNTY BURIAL GROUNDS

Unknown Name (Adjacent to Soledad)

SR-C078



MAP

N26.700548 W98.401674

+26° 42' 1.97", -98° 24' 6.03"

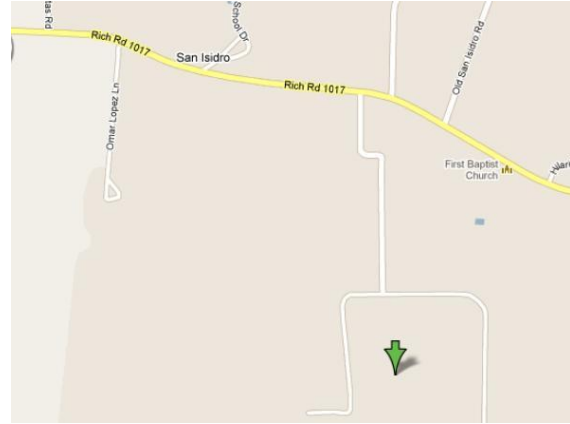
(La Reforma)

Directions to cemetery: From intersection of FM 1017 and FM 2294 (near San Isidro), travel east/southeast on FM 1017 2.1 miles; turn right/south onto unimproved/unnamed road, travel south .1 miles; cemetery is 500 yards southeast endangerment factors: fenced, active, maintained, adjacent to USGS and TXDOT feature cemetery.

STARR COUNTY BURIAL GROUNDS

Unnamed Cem

SR-C09



[MAP](#)

N26.70517° W98.44595°

+26° 42' 18.61", -98° 26' 45.42"

(San Isidro)

Driving Directions: From FM 1017/FM 2294 junction in San Isidro, go 0.8 mile west on FM 1017. Turn left onto gated, private road and go approx. 0.5 mile south-east-south (there will be a fork with a locked gate just southwest of house on left, stay to the left, following better road). At second fork, turn left and then right just after (east of) fence row (note: there is also a road just before the fence row, do not turn here). Go 0.2 mile south to cemetery, which will be on the right along fence row. The cemetery is highly endangered. It is a map feature, but it is located in a very remote area on private property and is not directly accessible from a public road. There are no cemetery signs posted. The cemetery is partly fenced, but sections have fallen. The cemetery is not maintained. A single grave marker consists of locally cast concrete cross with associated concrete urn. No inscriptions were evident on the cross. There may be more unmarked graves within the fenced enclosure. However, none were evident. Livestock graze freely within the cemetery.

STARR COUNTY BURIAL GROUNDS

Unnamed Cem SR-C087



MAP

N26.699448 W98.400612

Rio Grande City, TX 78582

(La Reforma)

Directions to cemetery: From the intersection of FM 1017 and FM 2294 (near San Isidro), travel east/southeast on FM 1017 2.1 miles; turn right/south onto unimproved/unnamed road, travel south .1 miles; cemetery is 300 yards southeast (adjacent to SR-C021) endangerment factors: fenced, active, maintained, adjacent to USGS and TXDOT feature cemetery.