



# TARRANT COUNTY TXGENWEB

Barbara Knox and Rob Yoder, County Coordinators

Copyright © 2008-2011. All rights reserved.

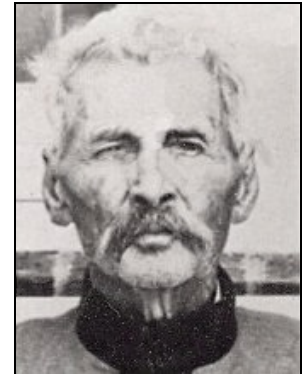
## Civil War Veterans of Northeast Tarrant County

### William M. Blevins

Compiled by Michael Patterson  
Copyright 2008-2011. All rights reserved.

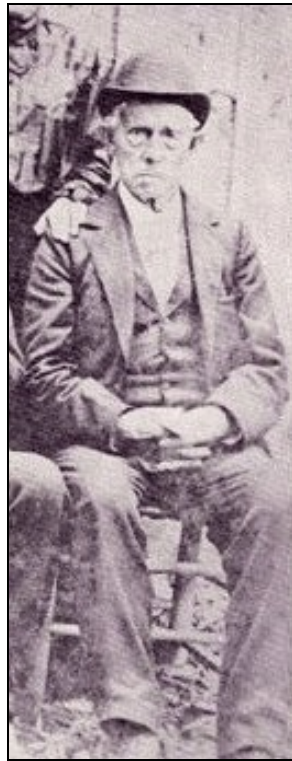
William M. Blevins was born January 18, 1845 in DeKalb County, Alabama, a son of White's Chapel area pioneer Jonathan Blevins. Jonathan, his wife Emily (Maxwell), and their oldest children lived in Tennessee until about 1840, when they moved to DeKalb Co., Alabama. About 1859 they moved again, and settled in Dade County, Georgia.

William M. Blevins enlisted in Dade County on July 19, 1861 as a private in Co. H, 21st Georgia Infantry, also known as the "Yancey Invincibles." Blevins was wounded at Winchester, Virginia on May 5, 1862. He was at Cedar Run, Virginia on August 9, 1862. Official records say he went into the enemy's lines in Dade County, Georgia on January 1, 1864. He was in the regiment from 1861 until May 1864, when he came home "crippled." He was furloughed to Dade County and was still there when the war ended.



Blevins came to Texas in 1871 and settled in the White's Chapel area. In 1895, he and his family lived in present-day Southlake on the J. A. Freeman survey, about where Crooked Lane intersects Kimball Road, South. Both he and his wife were pensioned by the State of Texas for his Confederate service.

He died in Grapevine at the home of his son-in-law, F. E. Rogers on June 24, 1927. His wife, Louisa M. (Tittle) Blevins, was born August 28, 1841 and died January 13, 1929. They are buried at White's Chapel. They had seven children, including Jonathan A., Sarah E., George L., Richard C., Ollie, Henry M., and Martin Blevins; according to a statement Mrs. Blevins made in 1910 only five of them were still living at that time.



Jonathan Blevins,  
William's father



William M. Blevins